



## All-rubber boxes

Made of vulcanized butyl rubber.

For industrial application in cases of aggressive environmental influences.

One solution for various problems:

- against humidity and perspiration water formation e.g. in dairy industries
- against aggressive gases and steam, e.g. in sewage treatment plants
- against dust and sparks, e.g. in steel production
- against strong mechanical demand, e.g. in the field of workshops
- against vibration and environmental influences, e.g. for cable car installations

# A connection beyond compare.

**“Schuko, FI, LS”**  
Explanations see page 1/0

## Individually adjustable.



**Superior stability:** Break proof, impact resistant, stable form and age-resisting.

**Insulation protection** by integrated wall mounting - separated from the wired area.

**Stainless steel** captive top screws.

**No corrosion.**

**Tight against dust and water jets** (IP 65).

**No formation of perspiration water** (not even in cases of strong temperature variation).

Superior **temperature range** from  $-30^{\circ}$  to  $+80^{\circ}\text{C}$ .

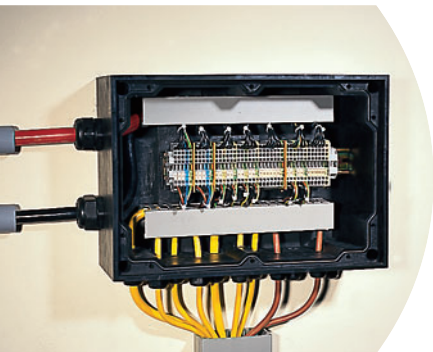
Resistant **against chemical** influences (oils, fat, a multitude of acids and caustics). Weather-, UV- and ozone resistant.

The special mixture of butyl rubber is self-extinguishing, free of **silicone and halogen**. In case of fire it produces little smoke. No yield of caustic or toxic materials.

**Tested quality.**



## For general use.



**Fast local assembling.** Self-adhesive drilling jig as well as rawl plug and screws are included (only for the models 1212, 1616, 1812, 2516 and 3020).

Very **easy adaptation** of the all-rubber case with conventional appliances such as spiral drilling machines, stepdrills, hobs, etc.

**Cable glands** can be placed, wherever they are needed for a clean installation.

**Time saving retrofit** on already installed boxes.

No previously determined points of installation on the base, therefore you have the possibility of **free partitioning**.

Easy adjustment of **built-in units** by chipboard screws.

All conventional **clamps** or binders can be built in.

Effortless machining on the **front plate** in polycarbonate or rubber.

Keys, switches, instruction control and record instruments can be **built in** quickly.

## Safe, undestructible.



For all applications in **industry and services**.

For dry and moist areas.

For **external use** under the influence of rain, snow and sun rays.

Perfect **manufacture upon your request** and wishes (with attached cable glands, standard binders, switches, keys, but also with

Schuko and CEE socket or other plug-in systems).

At your wish: **engraving or labelling** for identification of operation and technical reference.

# All-rubber boxes

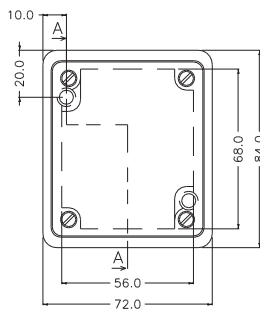
## Models 2100, 1900



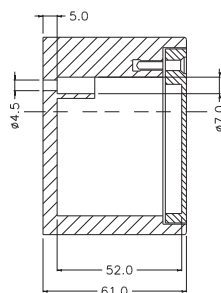
<b>Width x height x depth</b>	72 x 84 x 61 mm	92 x 92 x 52 mm
<b>International protection</b>	IP 54	IP 54
<b>Material</b>	lid: polyamide box: all-rubber halogen-free	lid: all-rubber halogen-free box: all-rubber halogen-free
<b>Gasket</b>	Foamed polyurethane ring	all-rubber sealing lip
<b>Lid-attachment</b>	A2 combined cross recessed and slotted screws	A2 combined cross recessed and slotted screws
<b>EDP-No.</b>	26413	42071
<b>Product-ID-No.</b>	2100.PA.L	1900.L

All parts, also those provided by you, can be installed by us during our fabrication process in the box of your choice.

### Model 2100

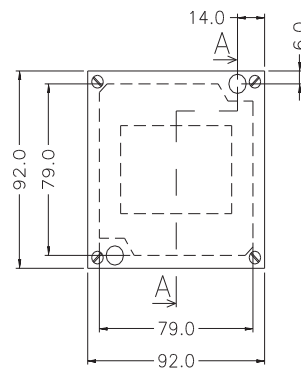


front view

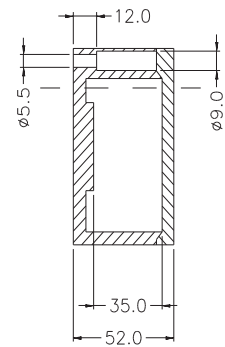


sectional view A-A

### Model 1900



front view



sectional view A-A

# All-rubber boxes

Models 1800, 1400



Model 1800

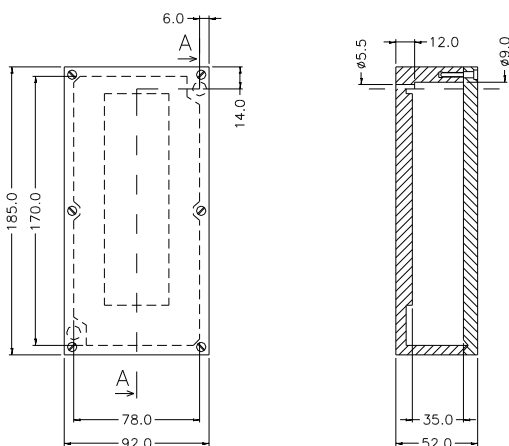


Model 1400

<b>Width x height x depth</b>	92 x 185 x 52 mm	78 x 290 x 67 mm
<b>International protection</b>	IP 54	IP 44
<b>Material</b>	lid: all-rubber halogen-free box: all-rubber halogen-free	lid: polycarbonate box: all-rubber halogen-free
<b>Gasket</b>	all-rubber sealing lip	all-rubber sealing lip
<b>Lid-attachment</b>	A2 combined cross recessed and slotted screws	A2 combined cross recessed and slotted screws
<b>EDP-No.</b>	30994	34251
<b>Product-ID-No.</b>	1800.L	1400.L

All parts, also those provided by you, can be installed by us during our fabrication process in the box of your choice.

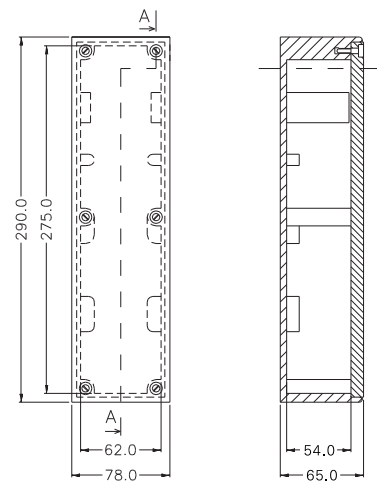
Model 1800



front view

sectional view A-A

Model 1400



front view

sectional view A-A

## All-rubber boxes

Models 2500, 2600, 2700



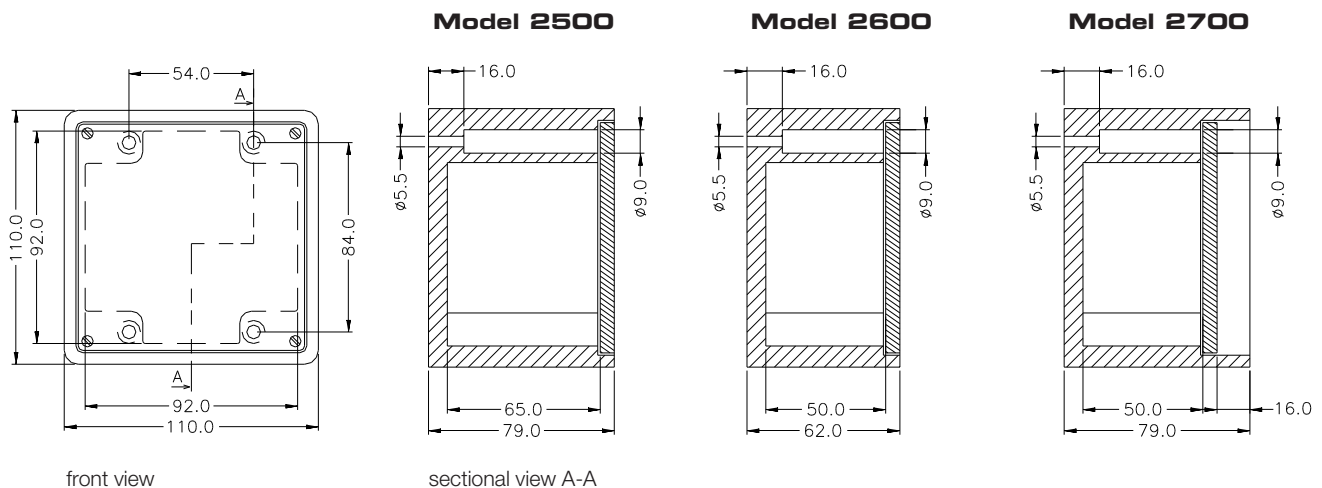
Model 2500

Model 2600

Model 2700

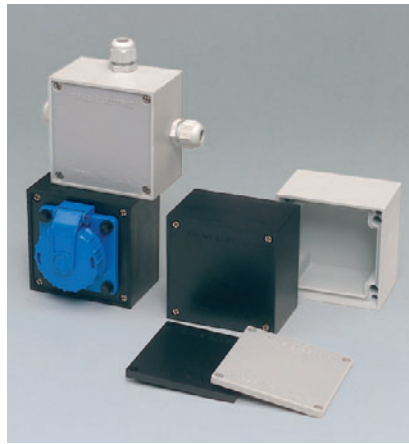
	Model 2500	Model 2600	Model 2700
<b>Width x height x depth</b>	110 x 110 x 79 mm	110 x 110 x 62 mm	110 x 110 x 79 mm
<b>International protection</b>	IP 54	IP 54	IP 54
<b>Material</b>	lid: polyamide box: all-rubber halogen-free	lid: polyamide box: all-rubber halogen-free	lid: polyamide box: all-rubber halogen-free
<b>Gasket</b>	Foamed polyurethane ring	Foamed polyurethane ring	Foamed polyurethane ring
<b>Lid-attachment</b>	A2 combined cross recessed and slotted screws	A2 combined cross recessed and slotted screws	A2 combined cross recessed and slotted screws
<b>EDP-No.</b>	27537	26299	26485
<b>Product-ID-No.</b>	2500.PA.L	2600.PA.L	2700.PA.L

All parts, also those provided by you, can be installed by us during our fabrication process in the box of your choice.

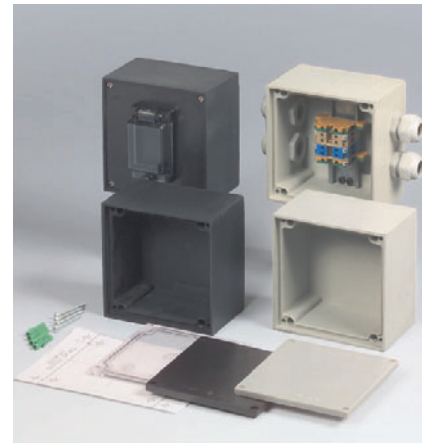


# All-rubber boxes

Models 1010, 1812



Model 1010

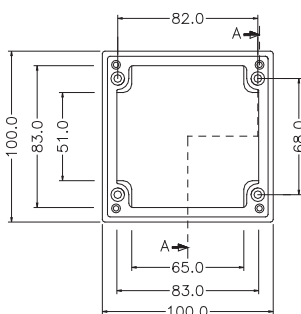


Model 1212

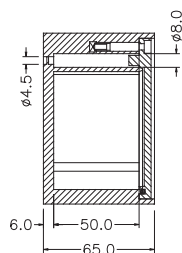
<b>Width x height x depth</b>	100 x 100 x 65 mm	125 x 125 x 76 mm
<b>International protection</b>	IP 65	IP 65
<b>Material</b>	lid: polycarbonate (black, grey) box: all-rubber halogen-free (black, grey)	lid: polycarbonate (black, grey, transparent) box: all-rubber halogen-free (black, grey)
<b>Gasket</b>	Foamed polyurethane ring	Foamed polyurethane ring
<b>Lid-attachment</b>	A2 combined cross recessed and slotted screws	A2 combined cross recessed and slotted screws
<b>EDP-No. Product-ID-No.</b>	black: 68130 1010.L	black: 41895 1212.L
<b>EDP-No. Product-ID-No.</b>	grey: 68131 1010.GRAU.L	grey: 41896 1212.GRAU.L

All parts, also those provided by you, can be installed by us during our fabrication process in the box of your choice.

## Model 1010

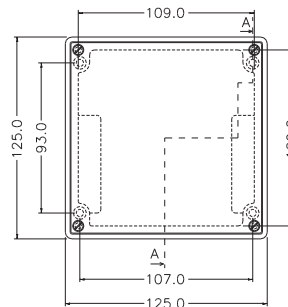


front view

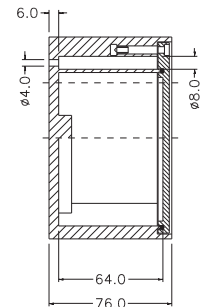


sectional view A-A

## Model 1212



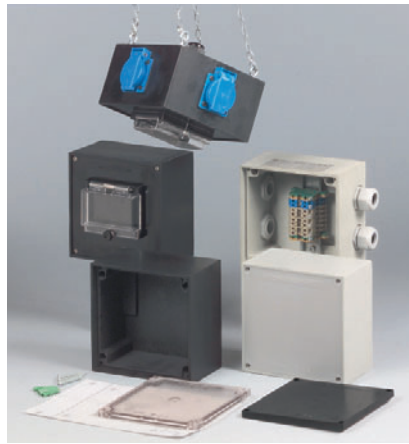
front view



sectional view A-A

# All-rubber boxes

## Models 1616, 1812



Model 1616

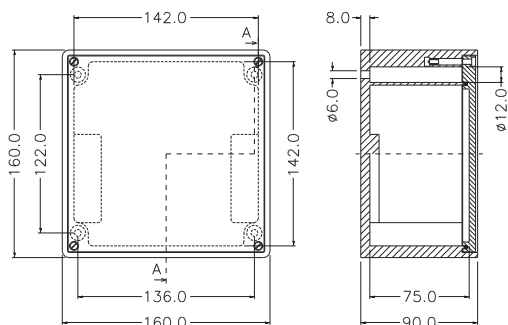


Model 1812

<b>Width x height x depth</b>	160 x 160 x 90 mm	125 x 180 x 90 mm
<b>International protection</b>	IP 65	IP 65
<b>Material</b>	lid: polycarbonate (black, grey, transparent) box: all-rubber halogen-free (black, grey)	lid: polycarbonate (black, grey, transparent) box: all-rubber halogen-free (black, grey)
<b>Gasket</b>	Foamed polyurethane ring	Foamed polyurethane ring
<b>Lid-attachment</b>	A2 combined cross recessed and slotted screws	A2 combined cross recessed and slotted screws
<b>EDP-No.</b> <b>Product-ID-No.</b>	black: 41924 1616.L	black: 41928 1812.L
<b>EDP-No.</b> <b>Product-ID-No.</b>	grey: 41925 1616.GRAU.L	grey: 41929 1812.GRAU.L

All parts, also those provided by you, can be installed by us during our fabrication process in the box of your choice.

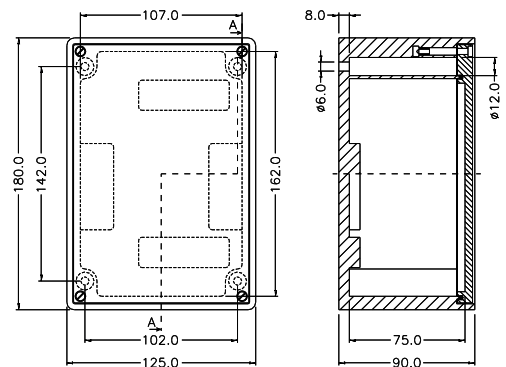
Model 1616



front view

sectional view A-A

Model 1812



front view

sectional view A-A

# All-rubber boxes

Models 2516, 3020



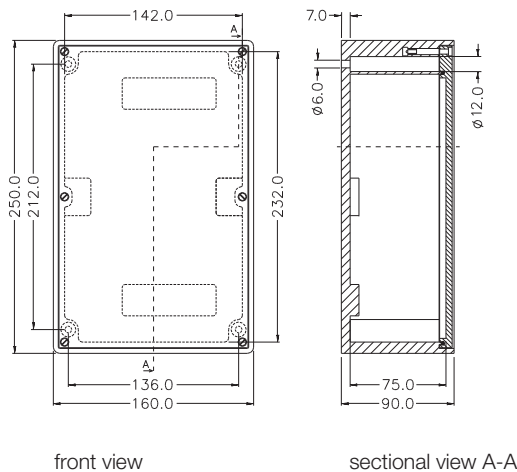
Model 2516

Model 3020

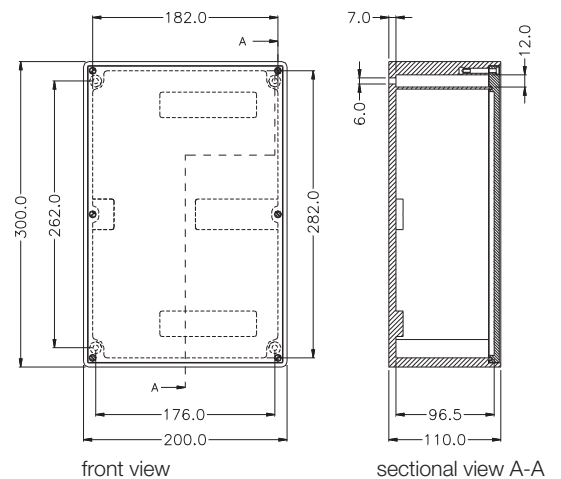
<b>Width x height x depth</b>	160 x 250 x 90 mm	200 x 300 x 110 mm
<b>International protection</b>	IP 65	IP 65
<b>Material</b>	lid: polycarbonate (black, grey, transparent) box: all-rubber halogen-free (black, grey)	lid: polycarbonate (black, grey, transparent) box: all-rubber halogen-free (black, grey)
<b>Gasket</b>	Foamed polyurethane ring	Foamed polyurethane ring
<b>Lid-attachment</b>	A2 combined cross recessed and slotted screws	A2 combined cross recessed and slotted screws
<b>EDP-No. Product-ID-No.</b>	black: 41932 2516.L	black: 49612 3020.L
<b>EDP-No. Product-ID-No.</b>	grey: 41933 2516.GRAU.L	grey: 49614 3020.GRAU.L

All parts, also those provided by you, can be installed by us during our fabrication process in the box of your choice.

Model 2516



Model 3020



# All-rubber boxes

## Models 2612

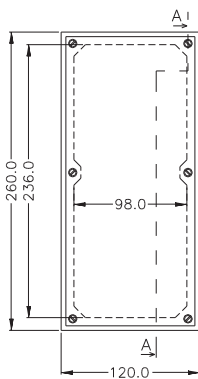


Model 2612

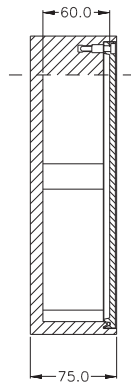
<b>Width x height x depth</b>	120 x 260 x 75 mm
<b>International protection</b>	IP 65
<b>Material</b>	lid: polycarbonate box: all-rubber halogen-free
<b>Gasket</b>	Foamed polyurethane ring
<b>Lid-attachment</b>	A2 combined cross recessed and slotted screws
<b>EDP-No.</b>	32153
<b>Product-ID-No.</b>	2612.L

All parts, also those provided by you, can be installed by us during our fabrication process in the box of your choice.

Model 2612



front view



sectional view A-A

# All-rubber boxes

Models 3800, 3900



Model 3800, 3900

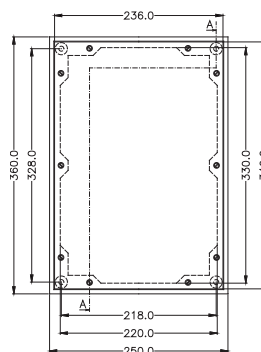
3800, 3900 with door

<b>Width x height x depth</b>	3800: 250 x 360 x 133 mm 3900: 250 x 360 x 173 mm Other depths on request.	3800: 250 x 360 x 133 mm 3900: 250 x 360 x 173 mm Other depths on request.
<b>International protection</b>	IP 65	IP 54
<b>Material</b>	lid: all-rubber halogen-free box: all-rubber halogen-free	door: GIFADUR (black) box: all-rubber halogen-free
<b>Gasket</b>	Foamed polyurethane ring	Foamed polyurethane ring
<b>Lid-attachment</b>	A2 combined cross recessed and slotted screws	–
<b>EDP-No.</b> <b>Product-ID-No.</b>	Model 3800: 42270 3800.GLATT.L.M	Model 3800: 83162 3800T.2DREHR.L.M
<b>EDP-No.</b> <b>Product-ID-No.</b>	Model 3900: 42271 3900.GLATT.L.M	Model 3900: 83161 3900T.2DREHR.L.M

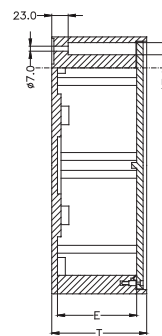
All parts, also those provided by you, can be installed by us during our fabrication process in the box of your choice.

## Model 3800, 3900

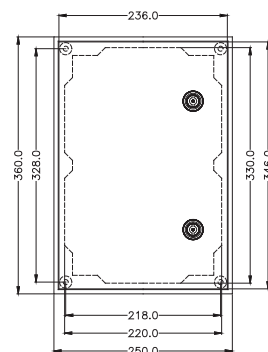
	Model 3800	3900
<b>Fitting depth (E)</b>	110	150
<b>Height (H)</b>	133	173



front view



sectional view A-A



# All-rubber boxes

## Models 7800 und 7900



Model 7800, 7900

7800, 7900 with door

**Width x height x depth**  
 7800: 360 x 500 x 133 mm  
 7900: 360 x 500 x 173 mm  
 Other depths on request.

7800: 360 x 500 x 133 mm  
 7900: 360 x 500 x 173 mm  
 Other depths on request.

**International protection** IP 65

IP 54

**Material** lid: all-rubber halogen-free  
 box: all-rubber halogen-free

door: polycarbonate (black, transparent)  
 box: all-rubber halogen-free

**Gasket** Foamed polyurethane ring

Foamed polyurethane ring

**Lid-attachment** A2 combined cross  
 recessed and slotted screws

A2 combined cross  
 recessed and slotted screws

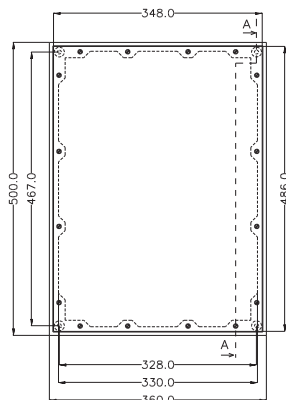
**EDP-No.** Model 7800: 39112  
**Product-ID-No.** 7800.GLATT.L.M

Model 7800:  
 83159 / 7800.TÜRE.SCHWARZ.2DREHR.L.M  
 83160 / 7800.TÜRE.TRANSPARENT.2DREHR.L.M

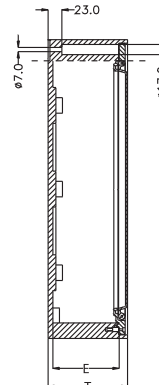
**EDP-No.** Model 7900: 39115  
**Product-ID-No.** 7900.GLATT.L.M

Model 7900:  
 83157 / 7900.TÜRE.SCHWARZ.2DREHR.L.M  
 83158 / 7900.TÜRE.TRANSPARENT.2DREHR.L.M  
 door hinges left or right

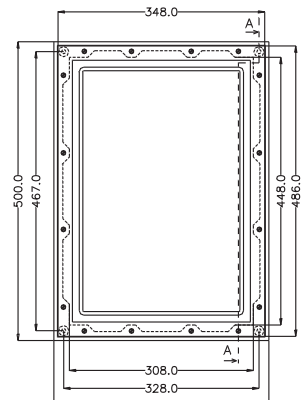
All parts, also those provided by you, can be installed by us during our fabrication process in the box of your choice.



front view



sectional view A-A

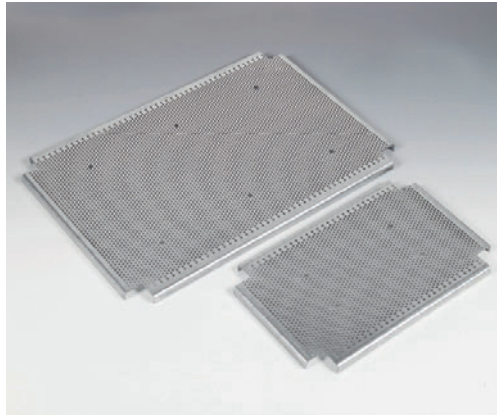


front view

	Model 7800	7900
<b>Fitting depth (E)</b>	110	150
<b>Height (H)</b>	133	173

## All-rubber boxes

Models 3800/3900 and 7800/7900 with door - Several design possibilities



### Design possibilities:

- Doors with left or right hinges
- 1-/3-part contact protection
- Different locking systems:
  - Plastic bolt lock, half cylinder, H 36000
  - rotary cabinet bolt (also lockable)
- Mounting plates
- Standard bars and binders
- Different cable glands
- Mounting frame

Please contact us.  
Our engineers would be pleased to help you at assembling  
the box of your choice.





### Watertight cable glands IP 68

EDP-No.	Description / ID-No. (black/grey, scope of glands)	Drilling diameter for counter nut mounting	Core drilling diameter for direct screwing
63726	KV.M12.METRISCH.2,5-6,5.MM.GRAU	13 - 14 mm	11 mm
63611	KV.M12.METRISCH.2,5-6,5.MM.SCHWARZ		
63727	KV.M16.METRISCH.3,5-10.MM.GRAU	17 - 18 mm	15 mm
63610	KV.M16.METRISCH.3,5-10.MM.SCHWARZ		
63728	KV.M20.METRISCH.7-14.MM.GRAU	21 - 22 mm	19 mm
63607	KV.M20.METRISCH.7-14.MM.SCHWARZ		
63730	KV.M25.METRISCH.9-18.MM.GRAU	26 - 27 mm	24 mm
63557	KV.M25.METRISCH.9-18.MM.SCHWARZ		
63731	KV.M32.METRISCH.14-25.MM.GRAU	33 - 34 mm	31 mm
63609	KV.M32.METRISCH.14-25.MM.SCHWARZ		
63733	KV.M40.METRISCH.18-32.MM.GRAU	41 - 42 mm	39 mm
63568	KV.M40.METRISCH.18-32.MM.SCHWARZ		
63734	KV.M50.METRISCH.24-38,5.MM.GRAU	51 - 52 mm	49 mm
63569	KV.M50.METRISCH.24-38,5.MM.SCHWARZ		
63735	KV.M63.METRISCH.35-48.MM.GRAU	64 - 65 mm	62 mm
63570	KV.M63.METRISCH.35-48.MM.SCHWARZ		

### Blind plug

of fibreglass reinforced polyamide PA 6 GF 30 for cable glands M12-M32 (only in bright grey RAL 7035) M40 and above in black only

EPD-No.	Product ID-No.
68175	BLINDSTOPFEN.M12.GRAU
68176	BLINDSTOPFEN.M16.GRAU
68025	BLINDSTOPFEN.M20.GRAU
68177	BLINDSTOPFEN.M25.GRAU
68178	BLINDSTOPFEN.M32.GRAU
68179	BLINDSTOPFEN.M40.SCHWARZ
68180	BLINDSTOPFEN.M50.SCHWARZ
68181	BLINDSTOPFEN.M63.SCHWARZ

### Blind tightening discs

of polyethylene (PE-LD) for cable glands with metric thread

EDP-No.	Product ID-No.	outer diameter in mm	thickness
63986	KV.BLINDSCHEIBE.M12	9,5	0,25
63982	KV.BLINDSCHEIBE.M16	15,5	0,25
63987	KV.BLINDSCHEIBE.M20	18,6	0,25
63577	KV.BLINDSCHEIBE.M25	23,0	0,25
63983	KV.BLINDSCHEIBE.M32	28,5	0,25

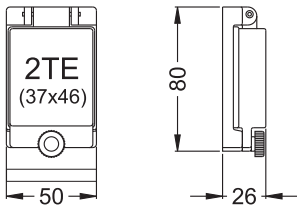
### Bars

cut to length, drilled and mounted

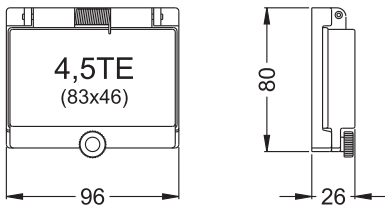
TS35 for BR 1010, 1212, 1616, 1812, 2516, 3020

# All-rubber boxes

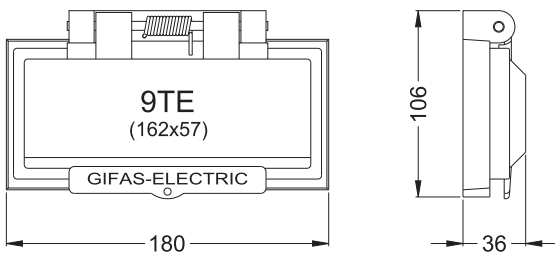
## Makrolon covers



**Product ID No.** KLADECK.2.SW  
**EDP-No.** 10227

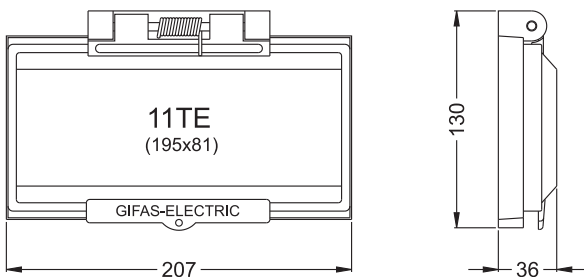


**Product ID No.** KLADECK.4,5.+DICHTUNG  
**EDP-No.** 41291



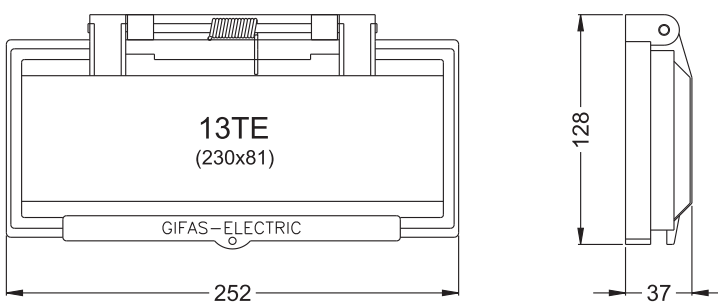
**Product ID No.** 80.94.01.K  
**EDP-No.** 12137

**Product ID No.** RÄNDELSCHRAUBE.KU.KOPF  
**EDP-No.** 25544



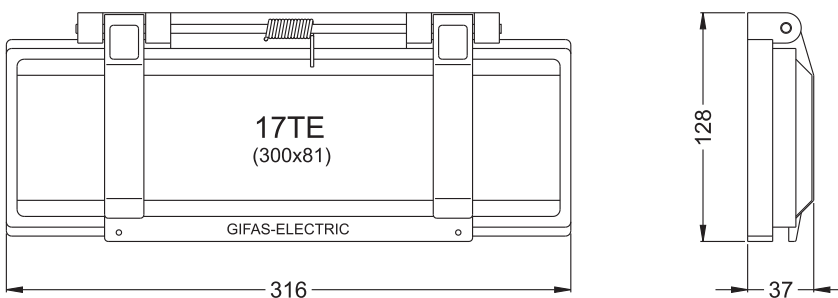
**Product ID No.** 70.94.01.K  
**EDP-No.** 12003

**Product ID No.** RÄNDELSCHRAUBE.KU.KOPF  
**EDP-No.** 25544



**Product ID No.** 74.94.01.K  
**EDP-No.** 50609

**Product ID No.** RÄNDELSCHRAUBE.KU.KOPF  
**EDP-No.** 25544



**Product ID No.** 75.94.02.K  
**EDP-No.** 36055

+ 2 pieces:  
**Product ID No.** RÄNDELSCHRAUBE.KU.KOPF  
**EDP-No.** 25544

TE = Partitions units  
Values in brackets: max. cut-out  
section in mm