



Cables and cords

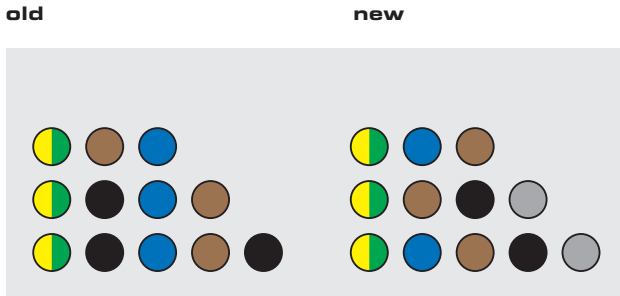
- for building sites
 - cables for sites
 - GIFAPLUS heavy duty cable
 - Proflex cable
 - GIFAPLAST EM
- GIFAS-Thermoflex cable
- Cords with non-rewireable plug
- Cords with time meter
- GIFAS-Thermflex-cable
- Spiral cables
- GIFAS equipotential wire
- GIFAS crane control cables
- GIFAS cable bridges

New colours of wires

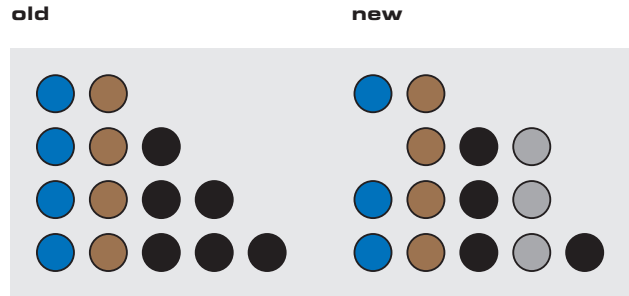
In October 2001 the European Document of Standards, the CENELEC HD 308 – assessing the colours of wires for energy cords and cables – was revised under special consideration of the necessities in the field of installation.

The charts below show a comparison between old and new colours of wires:

with earthing wire



without earthing wire



In addition to the changes in the sequence of colours a new colour was added: **grey!**

The ÖVE decided to change the colours of the national cords and types of cables according to the new colour system too. Thus the variation JN for the Austrian EVU cables is no longer applicable (changed to –J). The adaptation to the new colours was finalized at the end of April 2006.

Cables and cords

Special solutions



In all GIFAS fields of activity we understand our task not so much in offering a complete range of standard appliances but to provide individual solutions.

Talk to our advisory engineers and together we will draw up a concept for your individual cables to your advantage.

Due to the market situation GIFAS also offers special cables e.g. extreme temperature resistant cables or Hybrid* cables as per the individual customer's design.

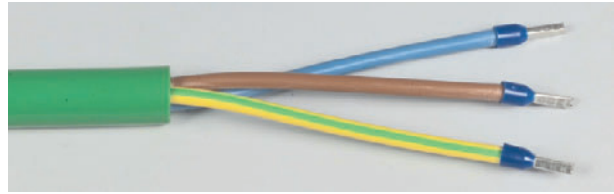
*) The term "Hybrid" is the adjective to "Hybris" meaning "mixed, of two kinds of origin".
With regard to cables and cords this can mean e.g. different voltages, protected from each other.

Cables and cords

Cables for building sites and extension cords



Tested and certified acc.
ÖVE/ÖNORM E 8241-55/2004



GIFAS cable for building sites K35 (coloured green / RAL 6018)

According to Austrian Standard these cables have been especially developed for building sites. They are acc. to ÖVE/ÖNORM 8240-4 equivalent to type H07 RN-F but meet other requirements.

Construction:

Fine stranded, flexible copper strands, shiny, wire-insulation and double outer sheath of oilresistant, high quality plastic on polyvinylchlorid basis, especially resistant against mechanical influences. Leads: concentrically single layer cabled.

Technical information:

Max. tolerable operating voltage: 750V
 Testing voltage: 2500V
 Disruptive discharge voltage: >6000V
 Bending radius: 10-times cable diameter
 Operating temperature range: - 35° to + 70° Celsius

Cross section (mm ²)	Copper amount kg/1000 m	Outside Ø in mm	Weight in kg for 100 m	EDP-No.	Product-ID-No.
3x1,5	45,0	10,1	15,82	78836	43152.BAU.PLUS
3x2,5	75,0	12,1	23,39	78837	43252.BAU.PLUS
5x2,5	125,0	14,6	34,42	78838	45252.BAU.PLUS
5x4,0	200,0	17,1	49,81	78839	45402.BAU.PLUS



Schuko extension cords

CEE extension cords

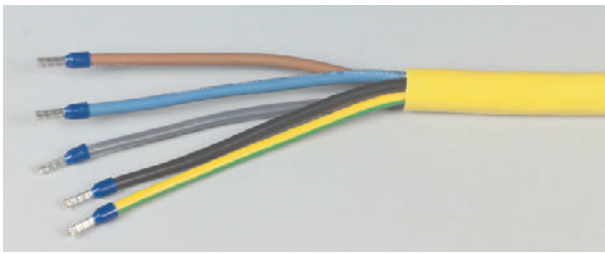
EDP-No.	Product-ID-No.	Cross section (mm ²)	Plug + Coupling	Length	Plug + Coupling	Cross section (mm ²)	Product-ID-No.	EDP-No.
43470	111.103152.BAU.211	3x1,5	Schuko	10 m				
48659	111.103252.BAU.211	3x2,5	Schuko					
43471	111.153152.BAU.211	3x1,5	Schuko	15 m	CEE 5x16A	5x2,5	301656.155252.BAU.57	48664
48660	111.153252.BAU.211	3x2,5	Schuko		CEE 5x32A	5x4,0	303256.155402.BAU.57	48666
43472	111.253152.BAU.211	3x1,5	Schuko	25 m	CEE 5x16A	5x2,5	301656.255252.BAU.57	43479
46146	111.253252.BAU.211	3x2,5	Schuko		CEE 5x32A	5x4,0	303256.255402.BAU.57	43478
48661	111.503152.BAU.211	3x1,5	Schuko	50 m	CEE 5x16A	5x2,5	301656.505252.BAU.57	45205
45760	111.503252.BAU.211	3x2,5	Schuko		CEE 5x32A	5x4,0	303256.505402.BAU.57	45206

For orders exceeding 100 m per dimension we print your company's name on the cable free of charge.

Cables and cords

GIFAPLUS

“Schuko, FI, LS”
 Explanations see page 1/0



Tested and certified acc.
 ÖVE/ÖNORM E 8241-55/2004

GIFAPLUS-cable K35

Oil resistant heavy PVC-cable for use at low temperatures.

Construction code: AT-N07V3V3-F

Colour: yellow

Optional colours: minimum quantity/order on request:
 black, olive, blue, orange, red

Application: As per Austrian regulations this cable was developed especially for the use on building sites. Acc. ÖVE/ÖNORM 8240-4 the cable is equivalent to type H0 7 RN-F but sufficient for diverging requirements.

Construction: Fine stranded flexible copper strands, blank, low temperature resistant lead insulation and notch insensitive double outer sheath made of special PVC. The leads are cabled in concentric single layers in optimum lay distance to achieve high flexibility.

Application: Mobile unprotected cables for heavy outdoor use (e.g. on building sites etc.). As per ÖVE/ÖNORM E 8065 of 08/2005 Annex C this cable is licensed for explosion hazard areas too.

Cross section (mm ²)	Copper amount kg/1000 m	Outside Ø in mm	Weight in kg for 100 m	EDP-No.	Product-ID-No.
3x1,5	45,0	10,1	15,82	78817	43152.PLUS
3x2,5	75,0	12,1	23,39	78820	43252.PLUS
4x1,5	60,0	11,2	19,88	78818	44152.PLUS
4x2,5	100,0	12,8	27,70	78821	44252.PLUS
5x1,5	75,0	12,3	23,78	78819	45152.PLUS
5x2,5	125,0	14,6	34,42	78822	45252.PLUS
5x4,0	200,0	17,1	49,81	78823	45402.PLUS
5x6,0	300,0	19,6	68,28	78824	45602.PLUS
5x16	800,0	30,1	170,63	78825	45162.PLUS



Extensions with GIFAPLUS cable

EDP-No.	Product-ID-No.	Cross section (mm ²)	Plug + Coupling	Length
26549	111.103152.211	3x1,5	Schuko	10 m
39932	111.103252.211	3x2,5	Schuko	
25568	111.153152.211	3x1,5	Schuko	15 m
48657	111.153252.211	3x2,5	Schuko	
32262	301656.155152.57	5x1,5	CEE 5x16A	
25142	301656.155252.57	5x2,5	CEE 5x16A	
27970	303256.155402.57	5x4,0	CEE 5x32A	
26412	111.253152.211	3x1,5	Schuko	25 m
27973	111.253252.211	3x2,5	Schuko	
48308	301656.255152.57	5x1,5	CEE 5x16A	
27108	301656.255252.57	5x2,5	CEE 5x16A	
27127	303256.255402.57	5x4,0	CEE 5x32A	
38764	306356.255162.57	5x16	CEE 5x63A	
30930	111.503152.211	3x1,5	Schuko	
28371	111.503252.211	3x2,5	Schuko	
48658	301656.505152.57	5x1,5	CEE 5x16A	
30776	301656.505252.57	5x2,5	CEE 5x16A	
28350	303256.505402.57	5x4,0	CEE 5x32A	
30575	306356.505162.57	5x16	CEE 5x63A	

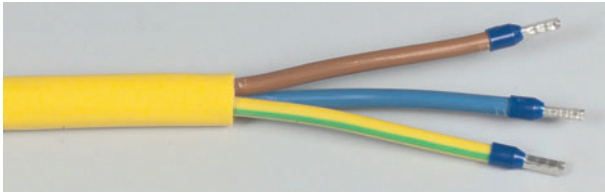
Technical information:

Max. tolerable operating voltage: 750 V
 Testing voltage: 3000 V
 Disruptive discharged voltage: >6000 V
 Bending radius: 10-times cable diameter
 Operating temperature range: -35°C bis +70°C (tested to -45°C)

- Very flexible at low temperatures
- Oilresistant
- Best thermal features
- Resistant against mechanical influences

For orders exceeding 100 m per dimension we print your company's name on the cable free of charge.

Cables and cords GIFAPLAST and THERMOFLEX



Energy cable produced and tested
 acc. ÖVE/ÖNORM E 8241



GIFAPLAST cable **(coloured: signal yellow / RAL 1021)**

Harmonised type, H05VV-F.

Energy cable for the connection of electrical appliances, electrical tools and lamps.

Construction:

Fine stranded, flexible copper strands, blank, wire insulation and outer sheath of special PVC. Leads: concentrically single layer cabled.

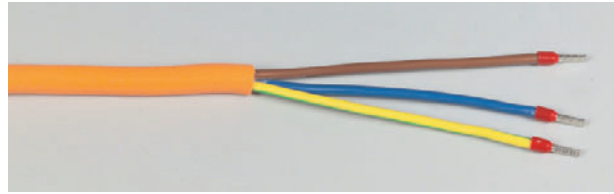
Technical information:

Max. tolerable operating voltage: 300/500V
 Testing voltage: 3000V
 Disruptive discharged voltage: >6000V
 Bending radius: 10-times cable diameter
 Operating temperature range: in motion: – 15°C to + 70°C
 at rest: – 30°C to + 70°C

Range of application: For connecting mobile equipment and tools in industry and agricultural areas a.s.o. Also usable in dry or wet rooms as fix-installation e.g. on walls of temporary buildings and similar applications.

Cross section (mm ²)	Copper amount kg/1000 m	Outside Ø in mm	Weight in kg for 100 m	EDP-No.	Product-ID-No.
2x1,0	20,0	6,8	6,0	11494	4210
2x1,5	30,0	7,6	10,0	11502	4215
2x2,5	50,0	9,6	12,0	11524	4225
3x1,0	30,0	7,2	9,5	11551	4310
3x1,5	45,0	8,3	11,0	11555	4315
3x2,5	75,0	9,7	15,0	11585	4325
4x1,5	60,0	8,7	12,5	11611	4415
4x2,5	100,0	10,9	21,0	11623	4425
5x1,5	75,0	9,5	14,5	11647	4515
5x2,5	125,0	12,0	23,0	11664	4525
7x1,5	105,0	12,7	21,5	11703	4715.FÜ*

* A05VV-F



GIFAS Thermoflex cable finest stranded

Highly flexible control cable, low temperature flexibility following H05VV-F.

Energy cable following VDE 0295 and ÖVE/ÖNORM E 8241
 – highly flexibility also at low temperatures
 – high UV-resistance

Construction:

Fine stranded highly flexible copper strands, 0,15 mm, blank, leads: concentrically single-layer cabled, special outer sheath made of thermoplastic rubber.

Technical information:

Max. tolerable operating voltage: 500V
 Testing voltage: 2000V
 Disruptive discharged voltage: >12000V
 Bending radius: 5-times cable diameter
 Operating temperature range: in motion: – 20°C to + 80°C
 at rest: – 35°C to + 80°C

Cross section (mm ²)	Copper amount kg/1000 m	Outside Ø in mm	Weight in kg for 100 m	EDP-No.	Product-ID-No.
2x1,0	20,0	7,1	6,0	14831	4210.TH.H
2x1,5	30,0	7,7	10,0	14482	4215.TH.H
3x1,5	45,0	8,2	12,0	15558	4315.TH.H

For orders exceeding 100 m per dimension we print your company's name on the cable free of charge.

Cables and cords

Cords with non-rewireable plugs and cords with time meter

“Schuko, FI, LS”
Explanations see page 1/0



Thermoflex cable with non-rewireable plug

Construction:

Thermoflex cable especially fine stranded, highly flexible leads. With non-rewireable contour or Schuko plug 16A 230V with double earthing system.

On the other end the insulation is 50 mm stripped and the leads are equipped with end sleeves.



Proflex cable with non-rewireable plug

Construction:

Proflex cable with non-rewireable contour or Schuko plug 16A 230V splash-waterproof, with double earthing system. On the other end the insulation is 50 mm stripped and the leads are equipped with end sleeves.



Cord with time meter

Time meter installed in an all-rubber box with equipment connection cable.

Feeding:

3 m cable 2x 1,5 sqmm with non-rewireable plugs 16A 230V

Equipment connection:

5 m cable 3x 1,5 sqmm without green/yellow conductor, cable stripped and the leads are equipped with end sleeves. Screws on the time meter box with safety lacquer coating against unauthorised opening.

Sizes: W x H x D (71 x 84 x 61 cm)

Product-ID-No. 21.3215.BHZ.5315

EDP-No. 25187

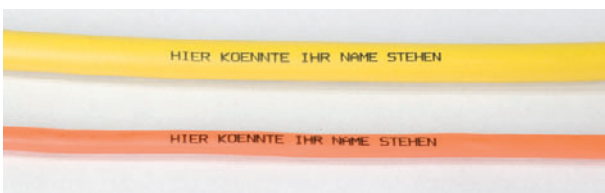
Range of application:

For checking the correct operating hours of electric hand tools.

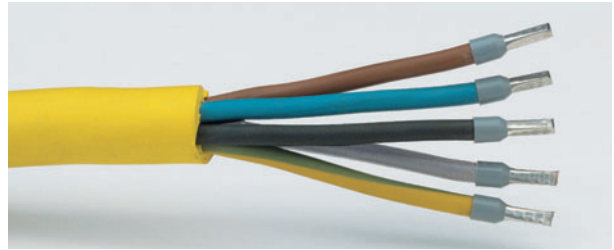
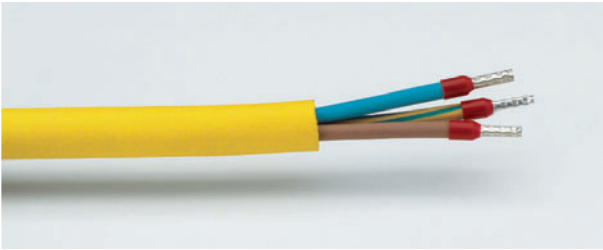
To see the next checking date of the tools.

For problem-free settlement of the correct operating hours of tended equipment.

Cross section (mm²)	Cable length	Plug	Thermoflex		Proflex	
			EDP-No.	Product-ID-No.	EDP-No.	Product-ID-No.
2x1,0	3 m	contour plug	25314	K.3.4210.TH.H	50654	K.3.4210.GG
2x1,0	5 m	16A 230V for	25320	K.5.4210.TH.H	50655	K.5.4210.GG
2x1,0	10 m	protected double insulated appliances	25313	K.10.4210.TH.H	50656	K.10.4210.GG
2x1,5	3 m	contour plug	25335	K.3.4215.TH.H	50657	K.3.4215.GG
2x1,5	5 m	16A 230V for	25348	K.5.4215.TH.H	50658	K.5.4215.GG
2x1,5	10 m	protected double insulated appliances	25328	K.10.4215.TH.H	50659	K.10.4215.GG
3x1,5	3 m	schuko plug	25360	S.3.4315.TH.H	50660	S.3.4315.GG
3x1,5	5 m	16A 230V	25361	S.5.4315.TH.H	50661	S.5.4315.GG
3x1,5	10 m		25316	S.10.4315.TH.H	50662	S.10.4315.GG



For orders of 25 pieces or more we print your company's name on the cords.



GIFAS-Proflex

Industrial rubber-cover energy cable H07 RN-F of very high quality. These cables have been especially developed for the demands on building and steel construction sites. They are highly resistant against welding beads and sparks. Moreover they offer high flexibility, resistance against oils, greases, acidic and alcalic substances as well as high mechanical and temperature resistance. Highly resistant against breaking and tearing. The cable can be permanently kept under water.

Construction: Fine stranded, flexible copper strands, blank, VDE tested construction, outer sheath of polychloroprene, good ozone and water resistance, free of silicone.

Use: Mobile cable licensed to be laid out unprotected for heavy duty purposes outdoor (e.g. on building sites) and for explosion-risk areas as well.

Technical information:

Max. tolerable operating voltage: 750V
 Testing voltage: 2500V
 Bending radius: 4-times cable diameter
 250.000 bending cycles
 Operating temperature range: -30° to +85° Celsius

- VDE tested
- Resistant against acids and caustic solutions
- Resistant against fuel and oils
- Good ozone and weather resistance
- Outstanding resistance against breaking and tearing
- Resistant against abrasion of the covering
- Excellent flexibility
- Superior mechanical resistance
- Free of silicone
- Rated voltage: 750V

Cross section (mm ²)	Number of leads	Outside Ø in mm	Weight in kg for 100 m	EDP-No.	Product-ID-No.
2 x 1,0	32 x 0,20	8,5	9,4	53270	4210.GG
2 x 1,5	30 x 0,25	9,0	12,0	53276	4215.GG
2 x 2,5	50 x 0,25	11,0	17,5	53341	4225.GG
3 x 1,5	30 x 0,25	9,5	15,0	11557	4315.GG
3 x 2,5	50 x 0,25	12,0	21,5	53279	4325.GG
4 x 1,5	30 x 0,25	12,0	19,0	53283	4415.GG
4 x 2,5	50 x 0,25	12,5	27,0	72160	4425.GG
5 x 1,5	30 x 0,25	12,2	23,0	50841	4515.GG
5 x 2,5	50 x 0,25	14,5	32,5	11666	4525.GG
5 x 4,0	56 x 0,30	17,0	47,5	53187	4540.GG
5 x 6,0	84 x 0,30	19,0	63,0	54317	4560.GG
5 x 10,0	80 x 0,40	27,2	84,0	80527	45100.GG
5 x 16,0	128 x 0,40	28,5	153,0	50485	45160.GG



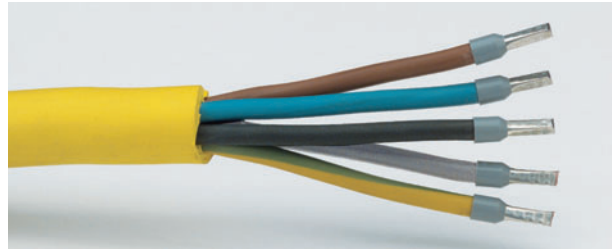
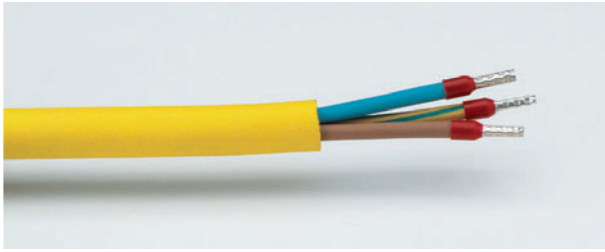
Extensions with Proflex-cable:

EDP-No.	Product-ID-No.	Cross section (mm ²)	Plug+ Coupling	Length
52775	111.10315.GG.211	3x1,5	Schuko	10 m
74063	111.10325.GG.211	3x2,5	Schuko	
65977	111.15315.GG.211	3x1,5	Schuko	15 m
81387	111.15325.GG.211	3x2,5	Schuko	
77653	301656.15525.GG.57	5x2,5	CEE 5x16A	25 m
76820	303256.15540.GG.57	5x4,0	CEE 5x32A	
64919	111.25315.GG.211	3x1,5	Schuko	50 m
61754	111.25325.GG.211	3x2,5	Schuko	
61756	301656.25525.GG.57	5x2,5	CEE 5x16A	50 m
51814	303256.25540.GG.57	5x4,0	CEE 5x32A	
66820	111.50315.GG.211	3x1,5	Schuko	50 m
61755	111.50325.GG.211	3x2,5	Schuko	
61757	301656.50525.GG.57	5x2,5	CEE 5x16A	50 m
83420	303256.50540.GG.57	5x4,0	CEE 5x32A	

For orders exceeding 100 m per dimension we print your company's name on the cable free of charge.

Cables and cords

Ultraflex® H07 HQ



Ultraflex® H07 HQ

Heavy finest stranded deep water and heat resistant rubber cable for highest demands as per:
 HD 22.4 / DIN VDE 0282-4
 HD 22.12 / DIN VDE 0282-12
 HD 22.16 / DIN VDE 0282-16

Technical data:

max. operating voltage: 450/700 V
 testing voltage: 2500 V / 50 Hz
 operating temperature range:
 in motion: - 25°C to + 90°C (lower temp. on request)
 at rest: - 40°C to + 90°C
 operating under water: + 40°C (higher temp. on request)
 licensed short
 circuit temperature: 250°C
 max. tension: 15 N/sqmm
 lead identification: DIN VDE 0293

Special features:

- wide range of application due to very high temperature- and polluted water resistance
- the cable can be used in water depth up to 500 m (in sea water too)
- maximum safety in case of short circuit in connection with optimum aging resistance
- high flexibility for easy bending
- high safety against corrosion at connectors, as the copper strands are tin-plated up to 6 sqmm acc. to DIN VDE 0295
- highest safety due to special insulating: testing AC voltage up to 3 kV for max. 3 min.

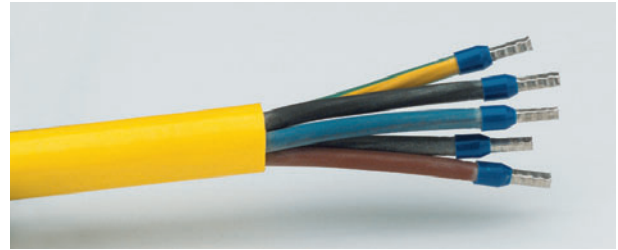
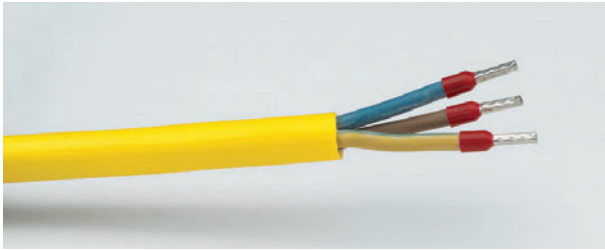
Application:

- indoor, outdoor and in explosion hazard areas acc. to DIN VDE 0165
- in factories with fire hazard and on building sites acc. to DIN VDE 0100, part 704
- open cast mining and quarries acc. to VDE 0168
- in industry, trade and farming business
- also for located installation, e.g. on walls, excavators, hoisters for operating in dirt water (max. 12m water depth) at medium strain
- in factory-, waste-, cooling-, surface-, rain- and mixed water as well as ground water and even sea water in depth of max. 500 m (acc. to DIN 4045 und 4046)
- for explosion-proof pumps (acc. to PTB)

Cross section (mm²)	Number of strands	outer Ø (mm)	weight kg/100 m	EDP-No.:	Prod. ID-No.
2 x 1,0	56 x 0,15	9,0	9,2	83807	4210.H07.HQ
2 x 1,5	84 x 0,15	10,0	11,5	83808	4215.H07.HQ
3 x 1,5	84 x 0,15	10,0	14,0	83809	4315.H07.HQ
3 x 2,5	140 x 0,15	13,0	20,3	83810	4325.H07.HQ
5 x 2,5	140 x 0,15	15,0	30,3	83811	4525.H07.HQ
5 x 6,0	84 x 0,30	19,0	55,0	83812	4560.H07.HQ
5 x 16,0	128 x 0,40	31,0	151,0	83546	45160.H07.HQ

Of course we also offer this cable as extension cord with Schuko or CEE-plugs mounted.

For orders exceeding 100 m per dimension we print your company's name on the cable free of charge.



GIFAS-PU-Flex

For dry and wet surroundings under medium mechanical strain. Good abrasion resistance of the outer sheath. Resistant against fuel and oil, diluted acids and caustics. To be used in building, farming, chemical industry, sewage treatment plants, paper mills a.s.o.

Construction:

Fine stranded, flexible copper strands, rubber insulated leads. VDE tested construction outer sheath of polyurethane.

Technical information H05BQ-F:

Max. tolerable operating voltage: 500V
 Testing voltage: 3000V
 Bending radius: 7,5-times cable diameter
 Operating temperature range: - 40° to + 90° Celsius

Technical information H07BQ-F:

Max. tolerable operating voltage: 750V
 Testing voltage: 3000V
 Bending radius: 7,5-times cable diameter
 Operating temperature range: - 40° to + 90° Celsius

- VDE tested construction
- Resistant against acids and caustic solutions
- Resistant against fuel and oils
- Good ozone and weather resistance
- Outstanding resistance against breaking and tearing
- Resistant against abrasion of the covering
- Excellent flexibility
- Admissible temperature range: -40° to +90° Celsius
- Superior mechanical resistance
- halogen-free
- Rated voltage: 500 / 750V

Cross section (mm²)	Number of leads	Outside Ø in mm	Weight in kg for 100 m	EDP-No.	Product-ID-No.
2 x 1,0	32 x 0,20	6,9	5,9	53273	4210.PU.GUIL.H05BQ-F
2 x 1,5	30 x 0,25	8,5	8,9	53278	4215.PU.GUIL.H07BQ-F
3 x 1,5	30 x 0,25	9,0	10,9	53118	4315.PU.GUIL.H07BQ-F
3 x 2,5	50 x 0,25	10,5	15,9	53282	4325.PU.GUIL.H07BQ-F
5 x 1,5	30 x 0,25	10,8	17,1	53286	4515.PU.GUIL.H07BQ-F
5 x 2,5	50 x 0,25	13,1	25,0	53287	4525.PU.GUIL.H07BQ-F
5 x 4,0	56 x 0,30	15,5	40,6	53292	4540.PU.GUIL.H07BQ-F
5 x 6,0	84 x 0,30	16,9	53,6	53294	4560.PU.GUIL.H07BQ-F

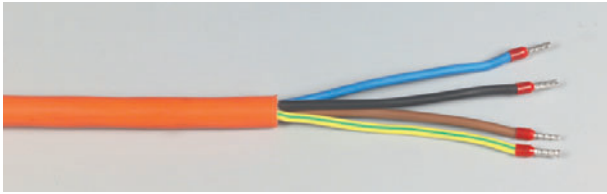
Of course we also offer these cable as extension cords with Schuko- or CEE-plugs mounted.



For orders exceeding 100 m per dimension we print your company's name on the cable free of charge.

Cables and cords

GIFAS Thermflex cable, GIFAFLEX-cable



GIFAS-Thermflex

Heat resistant, flexible special cable

Construction:

Fine copper strands, bare, under VDE 0295 category 5

Insulation:

Cross-linked polymere under VDE 207 part 23 HI 1 flame resistant. Outer sheath of cross-linked polymere under VDE 0207 part 24 HM 1 flame resistant. Orange outside cover.

Technical information:

Bending radius:	10-times cable diameter
Temperature range in motion:	- 15 to + 130° Celsius
Temperature range fix installed:	- 25 to + 130° Celsius
Rated voltage:	300 / 500V
Testing voltage:	2000V 50Hz
Insulation:	forward resistance >10GΩ
Lead colours:	up to 5 leads: green-yellow, black, blue, brown, black above 6 leads: green-yellow, black with number imprinted

Fire behaviour:

- Minor fire conduction
- Minimum smoke development
- Halogen-free
- Silicon-free
- oil resistant
- flame resistant

Characteristics:

Highly resistant against chemical influences from ozone, minerals, diluted acids and caustics.
The high mechanical resistance guarantees a very long life-time.

To be used in:

- Chemical plants
- Steel and aluminium plants
- Paper mills
- Pharmaceutical industry
- Machine construction industry
- Automobile industry

Cross section (mm ²)	Outside Ø in mm	Weight in kg for 100 m	EDP-No.	Product-ID-No.
2x1,5	9,0	11,5	11507	4215.HHFL
3x0,75	8,0	8,9	11550	43075.HHFL
3x1,5	8,8	12,1	11571	4315.HHFL
3x2,5	10,7	18,7	27535	4325.HHFL
4x1,5	10,0	15,5	11616	4415.HHFL
4x2,5	12,1	23,8	11629	4425.HHFL
5x1,5	10,9	18,8	11655	4515.HHFL
5x2,5	13,2	29,0	11671	4525.HHFL
7x1,5	13,3	27,7	26989	4715.HHFL

GIFAFLEX cable



GIFAFLEX guarantees the mobility of welding robots, charging cables for fork-lifts, defrosting facilities and welding cords with electrode holders.

Flexibility and softness are obtained by the single strand diameter of 0,07 mm and the special system of stranding as well as by the flexible rubber tube outer sheath to ensure free mobility of strands. Further assets of this cable are oil resistance and amplified surface provided by the many individual strands (e.g. 70A 18228 strands) to enable a fast release of heat and with it a better utilization of the different cable dimensions. As these cables are hand made they are available with a maximum length of 7 m only.

Voltage	approx. outer Ø (mm)	cross section (mm ²)	number and diameter of strands	EDP-No.	Prod. ID-No.
up to 65V	18	35	9260 x 0,07	11694	46635
up to 65V	19	50	13060 x 0,07	11695	46650
up to 65V	22	70	18228 x 0,07	11696	46670

Cables and cords

Spiral cables, equipotential spiral cables



GIFAS spiral cable

Construction:

Spiral cable with 200 mm straight ends on both sides, 40 mm stripped leads with end sleeves for strands.

Outer sheath: Polyurethane
Lead insulation: PVC

Technical Information:

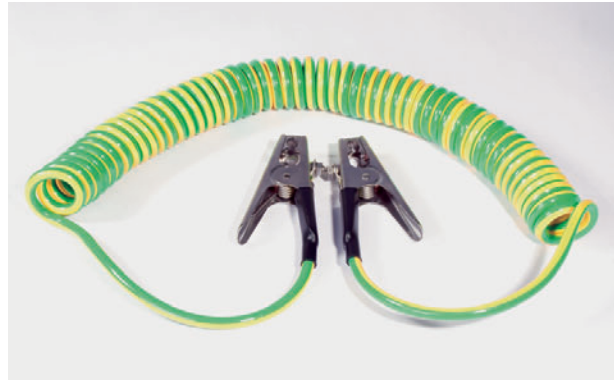
Temperature range: - 30° to + 80° Celsius
Mains voltage: 300 / 500V up to 1,0 sqmm
450 / 750V above 1,5 sqmm
Testing voltage: 3000V

Cross section (mm²)	Spiral-length	Stretched length appr.	Colour of outside covering	EDP-No.	Product-ID-No.
2x1,0	0,9 m	3,0 m	black	10455	SPK.0,9.4210
2x1,5	0,6 m	2,0 m	yellow	10477	SPK.0,6.4215
3x1,5	0,9 m	3,0 m	black	10458	SPK.0,9.4315
4x0,75	0,6 m	2,0 m	black	10451	SPK.0,6.44075
5x1,5	0,5 m	4,0 m	yellow	20156	SPK.0,5.4515.K

Same construction as above, with non-rewireable right angle plug.

Cross section (mm²)	Spiral-length	Stretched length appr.	Colour of outside covering	EDP-No.	Product-ID-No.
2x1,0	0,9 m	3,0 m	black	10456	SPK.0,9.4210.WS
3x1,5	0,9 m	3,0 m	black	10459	SPK.0,9.4315.WS

Other dimensions and lengths on request.



GIFAS Equipotential bonding cable

Special features:

The outer sheath (green/yellow) of the GIFAS EQUIPOTENTIAL BONDING CABLE is made of Polyether-Polyurethane. Thus it contains no Cadmium, FCKW, Halogen and Silicone.

The outer sheath is oil resistant acc. to VDE 0472 part 803, sea-water resistant, break proof and impact resistant, termite resistant, ozone resistant and to a great extent resistant against acids, caustic solutions and solvents.

Special characteristics are low weight as well as the resistance against temperature and corrosion. The wire is characterised by the resistance against shock and impact at high and low temperatures and a good resistance against pressure despite a relatively thin coating.

Application:

- control-, measuring and laboratory engineering
- chemical industry
- medicine and electrical engineering
- automobile industry
- apparatus engineering
- pneumatic and hydraulic industry
- foodstuff industry

Technical data:

temperature range: -40°C to +80°C (short-time +100°C)
operating voltage: 1000 V
testing voltage (AC): 3500 V
stranding: finest stranded, category 6
single strand: EL Cu 58 F 21 blank soft
conductor resistance: acc. to DIN VDE 295, IED 60228
spiral length: approx. 600 mm
stretched length: approx. 5.000 mm

Earthing tongs Chromium plated

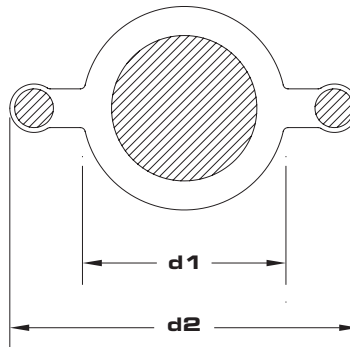
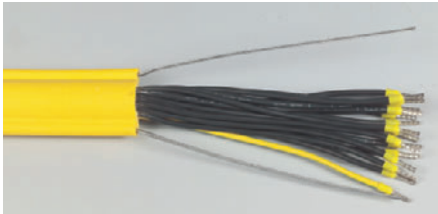
EDP-No.	Prod. ID-No.	mm²
74614	SPK.ERD.5M.4160.GN.GE.608.KS.M8	6
74613	SPK.ERD.5M.4160.GN.GE.2x608	6
74618	SPK.ERD.5M.41100.GN.GE.608.KS.M8	10
74615	SPK.ERD.5M.41100.GN.GE.2x608	10

Earthing tongs stainless steel

EDP-No.	Prod. ID-No.	mm²
77971	SPK.ERD.5M.4160.GN.GE.608.INOX.KS.M8	6
75849	SPK.ERD.5M.4160.GN.GE.2X608.INOX	6
75848	SPK.ERD.5M.41100.GN.GE.608.INOX.KS.M8	10
77972	SPK.ERD.5M.41100.GN.GE.2X608.INOX	10

Cables and cords

GIFAS crane control cable



Crane and lift control cables

PVC outer sheath also flexible at low temperatures with two supporting steel wires which are integrated in the covering.

Technical information:

Lead identification: uni coloured, continuously numbered according to VDE 0293, with earthing conductor
 Temperature range in motion: - 30° to + 70° Celsius
 Temperature range at rest: - 40° to + 70° Celsius
 Bending radius: forward-backward bending 12x cable diameter
 Maximum tolerable operating voltage: 500 V
 Testing voltage: 3000 V
 Insulating resistance: min. 20 MΩ
 Carrying capacity: up to 135kg absolutely safe, the critical point is 190kg (own weight of the cable must be considered!)

Application:

- For control- and pushbuttons at cranes and conveyors
- Steel plants
- As freely suspended cords
- On high bay racks

Cross section (mm²)	Outside diameter appr. (mm)		Weight in kg for 100 m	EDP-No.	Product-ID-No.
	d1	d2			
12x1,0	14,9	27,3	44,6	44530	41210.2TY
18x1,0	17,0	32,0	52,8	44532	41810.2TY
25x1,0	21,0	36,0	66,0	44534	42510.2TY

GIFAS Cable bridges

Protect

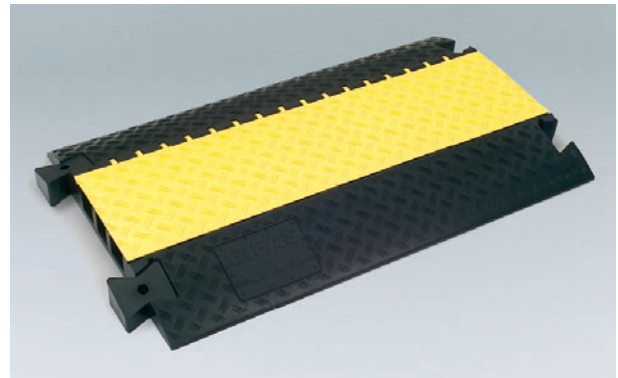


Protect your cable crossing sections with this new GIFAS cable bridge system and avoid accidents and damage. The ideal solution for electricity supply cords, gas-, water-, compressed air and hydraulic tubes and hoses. This new system provides order and safety for the short- and long time positioning of your cords and hoses. Made of Polyurethane, the surface with anti slip texture and the eye-catching yellow Polyethylene lid the GIFAS cable bridges containing 3 cable channels are suitable for daily use in in- and outdoor areas.

Every individual cable bridge can be connected with others by connecting plugs. Every cable bridge will be delivered with 2 of these plugs.

The hinged lid stands upright when the cords or hoses are inserted in the channels and can easily be closed via the integrated zip system afterwards.

The wide range of fittings turns these cable bridges into a flexible system with an excellent price/performance ratio.



The main assets at one glance:

- easy to install by a connecting system
- versatile in use
- endlessly extendable
- easy to retrofit
- warning colour: yellow – black
- reliable material Polyurethane
- unbreakable
- highly loadable
- abrasion proof
- non-slipping
- insulating
- temperature resistant
- weather resistant
- resistant against solvents, fuel, oil, defrosting agents
- longevity

GIFAS cable bridges to be used everywhere and for every purpose

- building sites
- streets
- boardwalks
- public areas
- entertainment districts
- fairgrounds
- showmen
- concert halls
- festivity- and sports grounds
- open-air events
- radio, film and television
- studios
- production facilities
- company areas
- airports
- ports
- emergency operations
- military purposes.

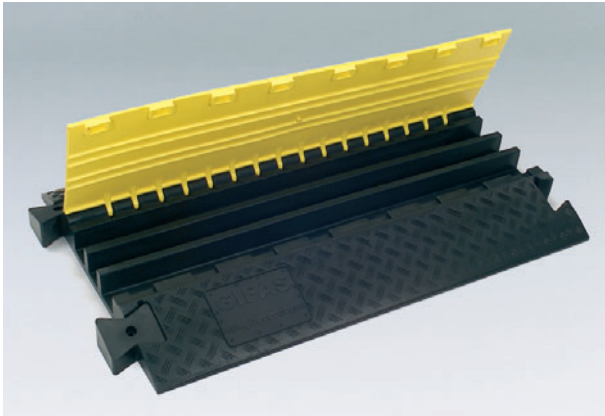
Further variations of cable- and hose bridges on request.



GIFAS-ELECTRIC

GIFAS-Cable bridges

Protect

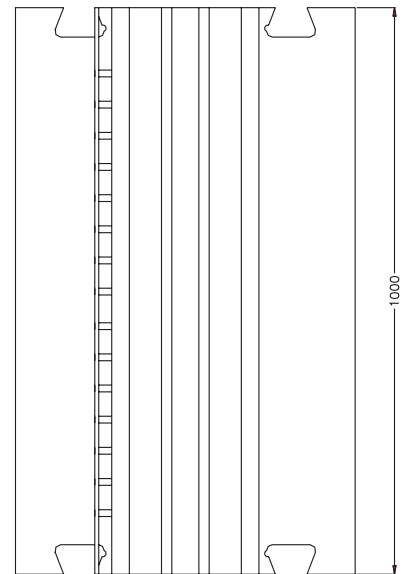


Technical data

material of base:	Polyurethane (black)
material of lid:	Polyethylene (warning colour: yellow)
cable channels:	
- number:	3 channels
- width:	53 / 46 / 58 mm
- height:	50 mm
dimensions L x W x H	1000 x 600 x 75 mm
weight:	19 kg
loading pressure:	5 t/400 cm²
fire resistance:	acc. to DIN 4102-B2
accessories:	1 pair connecting plugs

It is so easy...

... to put the elements together. Easy and fast. You assemble a perfect cable bridge without any effort and within the shortest time possible. You already save money during installation. But especially you will save money in the application. Your cables or hoses will live many times longer with this professional protection. No slipping! No squeezing! No chafing! Clean insulation channels keep your cables and hoses as good as new. An investment that pays off within short!

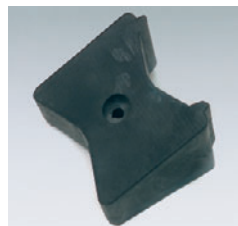


EDP-No.	Prod. ID-No.	Length in mm	Width in mm	Height in mm
67898	KABELBRÜCKE.1000.600.75.GIFAS	1000	600	75

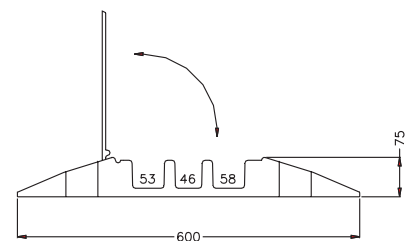
Accessories



End ramp with cable outlet
– reducing hazard of tripping



connecting plugs
(1 pair as spare part)

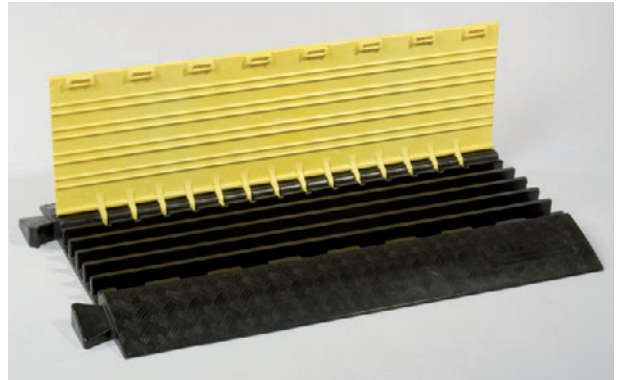
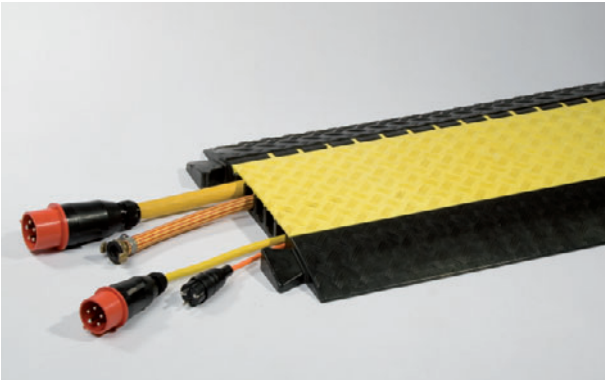


EDP-No.	Prod. ID-No.	Dimensions in mm	Weight in kg
67899	KABELBRÜCKE.ENDSTÜCK.GIFAS	150 x 600 x 75	2,6
67940	KABELBRÜCKE.VERBINDUNGSZAPFEN.GIFAS.1P		

Further variations of cable- and hose bridges on request.

GIFAS Cable bridges

Midi



Technical data

- material of base: Polyurethane (black)
- material of lid: Polyethylene (yellow-orange)
- integrated connecting plugs
- 5 channels
- loading pressure: 5t/400 cm²

dimensions:

- length: approx. 880 mm
- width: approx. 540 mm
- height: approx. 55 mm

weight:

approx. 12 kg

5 channels:

- width: approx. 35 mm
- height: approx. 36 mm

Product assets:

- easy to install by connecting system
- unbreakable
- insulating
- non-slipping
- temperature resistant: -40°C to +70°C
- weather resistant
- longevity
- resistant against solvents, fuel, oil and defrosting agents

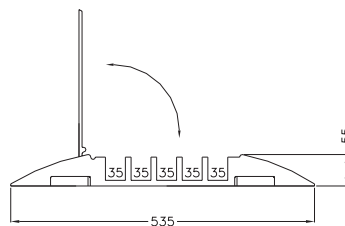
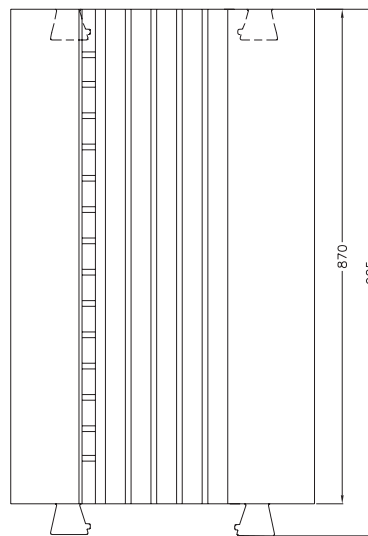
Single module with reliable plastic shutting system!

EDP-No.

Prod. ID-No.

72205

KABELBRÜCKE.880.540.55.GIFAS

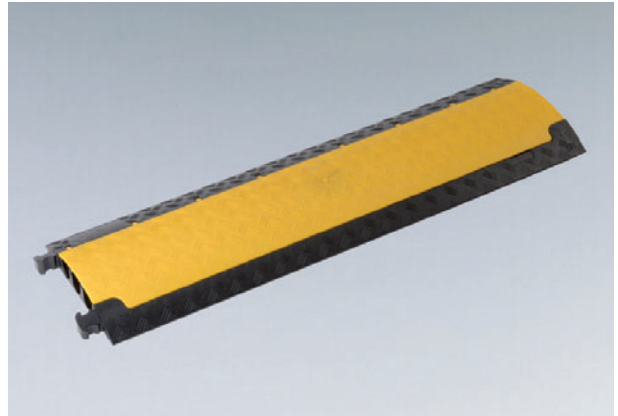
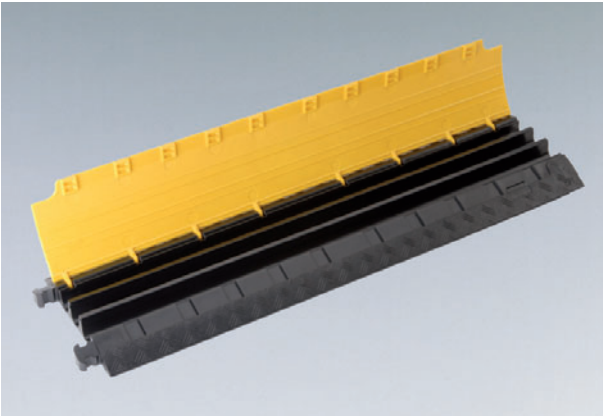


Further variations of cable- and hose bridges on request.



GIFAS Cable bridges

Protect Mini



The small among the big ones. Light weight, for professional and general use. This cable bridge meets all expectations of cable protection.

It is compact, very light (only 5 kg!) but still withstanding the passing of vehicles. Coloured in the familiar black/yellow safety design.

Equipped with 3 insulating channels of 35 mm diameter and a total height of 48 mm, this bridge will mainly be used indoor, but the rating of 2 tons also allows car traffic without problems.

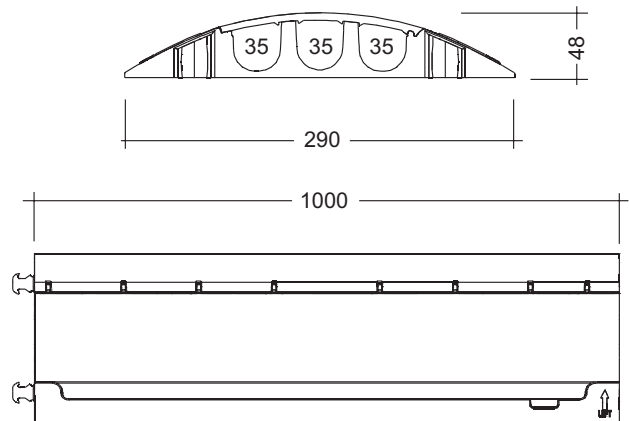
The bottom of the bridge is equipped with an anti-slip surface, providing optimum grip on most grounds.

The PROTECT MINI is resistant against oil, acids and fuel. It is equipped with self-cleaning hinges.

Technical Data

material:	Polyurethane
length:	1000 mm
width:	290 mm
total height:	48 mm
cable channels:	3
width of channels:	35 mm
rating:	approx. 2 t/400 cm ²
weight:	approx. 5 kg

EPD-No.	Prod.ID-No.
86042	KABELBRÜCKE.1000.290.48.GIFAS



Further versions of cable- and hose bridges on request.

GIFAS cable bridges and hose bridges



Cable bridge MICRO

L x W x H:	1000 x 280 x 32 mm
channels:	6
width of channels:	17 mm
loading pressure:	up to 2 t / 400 cm ²
weight:	approx. 4,4 kg

EDP-No.	Product-ID-No.
89207	KABELBRÜCKE.1000.280.32.MICRO



Cable bridge MEGA

L x W x H:	700 x 780 x 140 mm
channels:	4
width:	2 x 120 mm, 2 x 35 mm
height:	50/115/115/50 mm
loading pressure:	up to 6 t / 400 cm ²
weight:	approx. 30,5 kg

EDP-No.	Product-ID-No.
81902	KABELBRÜCKE.750.700.145.MEGA



Cable bridge JUNIOR

L x W x H:	1000 x 250 x 34 mm
channels:	3
width:	17 / 23 / 17 mm
height:	24 mm
loading pressure:	up to 680 kg / 400 cm ²
weight:	approx. 2,4 kg

EDP-No.	Product-ID-No.
61677	KABELBRÜCKE.1000.250.3.JUNIOR

GIFAS cable bridges and hose bridges



Cable bridge MINI

L x W x H:	800 x 435 x 37 mm
channels:	7
width:	30 mm
height:	bis 30 mm
loading:	pedestrians & bicycles
weight:	approx. 3,5 kg

EDP-No.	Product-ID-No.
72948	KABELBRÜCKE.800.435.40.MINI



Cable bridge SUBTERRA

L x W x H:	760 x 570 x 150 mm
channel:	1
width:	113 mm
height:	100 mm
loading pressure:	up to 9 t / 400 cm ²
weight:	approx. 14 kg

EDP-No.	Product-ID-No.
84237	KABELBRÜCKE.760.570.150.SUBTERRA



Hose brige

L x W x H:	860 x 300 x 90 mm
channels:	2
	For fire brigades for laying out B and C hoses.
angle of gradient:	approx. 15°
execution:	similar DIN 14820
temperature zone:	-20°C up to + 70°C
max. loading pressure:	40 t
weight:	approx. 11 kg

EDP-No.	Product-ID-No.
84066	SCHLAUCHBRÜCKE.860X300X90.40T