

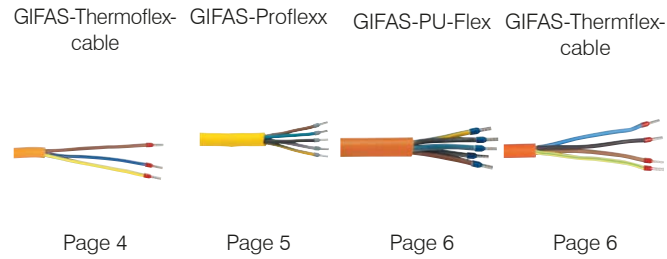
SYSTEMATIC QUALITY

Cables / Hose bridges



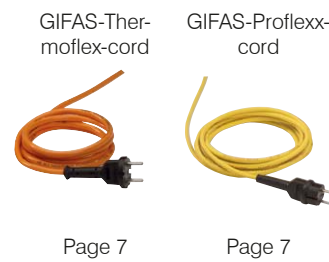
Cable and Wires

Page 4 - 6



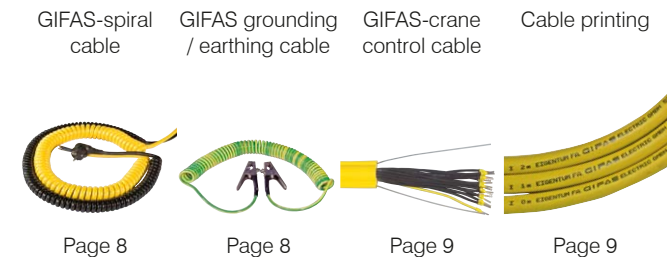
Device Connection wires

Page 7



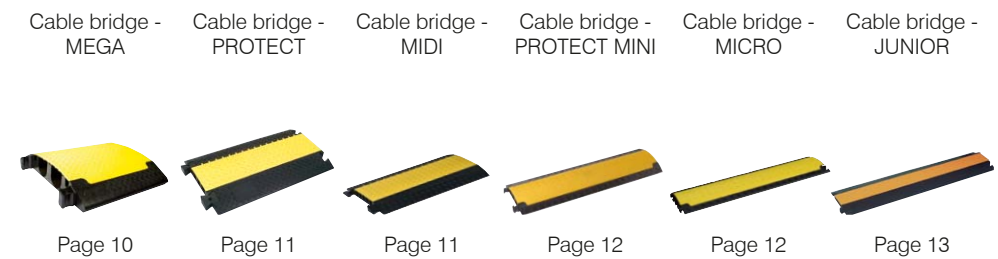
Special Cables Cable Printing

Page 8 - 9



Cable bridges hose bridges

Page 10 - 14



Application examples

Page 15



Wires and Cable

Developing new insulating materials for GIFAPLAST, Proflexx, and GIFAS Thermoflex cables enable the product features to be extensively adapted to the user's requirements.

GIFAPLAST, GIFAS PU-, and Proflexx cables with reinforced outer sheaths are compliant as per the GMSuö standard for heavy-duty rubber hose cables and are thus approved for use on building sites and in areas where explosions are possible.

These cables have a very large scope of application due to the use of advanced insulating materials and specialised manufacturing methods.

Cable Printing:

On request we will print the cable.
(see page 9)

Packaging:

Unless otherwise agreed, the cable lengths are finished on 100 m rings or for larger dimensions, they are wound around a one-way cable reel.

Production lengths:

Depending on the manufacturing method, +/- 10% may be oversupplied/undersupplied for lengths of 500 m and over. Guaranteeing that a specific length is supplied requires a supplemental agreement.

Cable bridges and hose bridges

Protect your cable transitions using the GIFAS cable or hose bridge system to avoid accidents and damage.

Ideal for power, gas, water, compressed-air, and hydraulic cables.

These systems tidy up all temporary or permanent sets of cables and make them safe.

The elements can be infinitely extended using integrated or attached connecting plugs.

Cable bridge -
MINI



Page 13

SUBTERRA Un-
derground cable
bridge



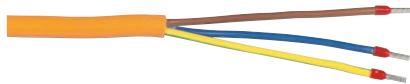
Page 14

Hose bridge



Page 14

GIFAS-Thermoflex-cable finest stranded



Highly flexible control cable, low-temperature flexibility on the basis of H05VV-F.

Energy cable as per VDE 0295 and ÖVE/ÖNORM E 8241.

- high flexibility even at low temperatures
- high UV-resistance

Model

Fine-stranded highly flexible copper strands, 0.15 mm, sheer, cores: concentrically single-layer cabled, special outer sheath made of thermoplastic rubber.

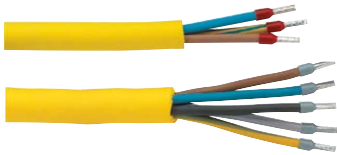
Technical data

Max. tolerable operating voltage	500V
Testing voltage	2.000V
Disruptive discharged voltage	>12.000V
Bending radius	5-times cable diameter
Operating temperature range	in motion: - 20°C to + 80°C at rest: - 35°C to + 80°C

GIFAS-Thermoflex-cable					
EDP No.	Product ID No.	Cross section (mm ²)	Copper no. kg/ 1000 m	Outside Ø (mm)	Weight kg/ 100 m
14831	4210.TH.H	2x1.0	20.0	7.1	6.0
14482	4215.TH.H	2x1.5	30.0	7.7	10.0
15558	4315.TH.H	3x1.5	45.0	8.2	12.0

Free printing of the cable with your company name for orders over 100 m per dimension (see page 9).

GIFAS-Proflexx



Industrial flexible rubber line H07RN-F of very high quality. These cables have been specifically developed for the demands on building and steel construction sites. They are highly resistant to welding beads and sparks. Moreover they offer high flexibility, resistance to oils, greases, acidic and alkaline substances as well as high mechanical and temperature resistance. Highly resistant against breaking and tearing. The cable can be permanently kept under water.

Model

Fine-stranded, flexible copper strands, sheer, VDE tested construction, outer sheath of polychloroprene, free of silicone.

Use

Mobile, unprotected cable for heavy-duty outdoor use (e.g. on building sites etc.). It is also authorised for use in explosion-hazardous areas.

Technical data

Max. tolerable operating voltage 750V
 Testing voltage 2.500V
 Bending radius 4-times cable diameter
 250.000 bending cycles
 Operating temperature range - 30°C to + 85°C

GIFAS-Proflexx-cable					
EDP No.	Product ID No.	Cross section (mm²)	Copper no. kg/ 1000 m	Outside Ø (mm)	Weight kg/ 100 m
53270	4210.GG	2x1.0	20	8.5	9.4
53276	4215.GG	2x1.5	30	9.0	12.0
53341	4225.GG	2x2.5	50	11.0	17.5
11557	4315.GG	3x1.5	45	9.5	15.0
53279	4325.GG	3x2.5	75	12.0	21.5
53283	4415.GG	4x1.5	60	12.0	19.0
72160	4425.GG	4x2.5	100	12.5	27.0
50841	4515.GG	5x1.5	75	12.2	23.0
11666	4525.GG	5x2.5	125	14.5	32.5
53187	4540.GG	5x4.0	200	17.0	47.5
54317	4560.GG	5x6.0	300	19.0	63.0
80527	45100.GG	5x10.0	500	27.2	84.0
50485	45160.GG	5x16.0	800	28.5	153.0

Free printing of the cable with your company name for orders over 100 m per dimension (see page 9).



Solid rubber Schuko-extension					
EDP No.	EDP No. F&B	Product ID No.	Cross section (mm²)	Plug + Coupling	Length
52775	85074	111.10315.GG.211	3x1.5	Schuko	10 m
74063	85076	111.10325.GG.211	3x2.5	Schuko	10 m
65977	85078	111.15315.GG.211	3x1.5	Schuko	15 m
81387	125301	111.15325.GG.211	3x2.5	Schuko	15 m
64919	125302	111.25315.GG.211	3x1.5	Schuko	25 m
61754	85080	111.25325.GG.211	3x2.5	Schuko	25 m
66820	85081	111.50315.GG.211	3x1.5	Schuko	50 m
61755	85084	111.50325.GG.211	3x2.5	Schuko	50 m



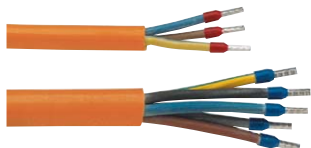
Solid rubber CEE-extension					
EDP No.	Product ID No.	Cross section (mm²)	Plug + Coupling	Length	
77653	301656.15525.GG.57	5x2.5	CEE 5x16A	15 m	
76820	303256.15540.GG.57	5x4.0	CEE 5x32A	15 m	
108366	303256.15560.GG.57	5x6.0	CEE 5x32A	15 m	
61756	301656.25525.GG.57	5x2.5	CEE 5x16A	25 m	
51814	303256.25540.GG.57	5x4.0	CEE 5x32A	25 m	
76337	303256.25560.GG.57	5x6.0	CEE 5x32A	25 m	
61757	301656.50525.GG.57	5x2.5	CEE 5x16A	50 m	
83420	303256.50540.GG.57	5x4.0	CEE 5x32A	50 m	
103904	303256.50560.GG.57	5x6.0	CEE 5x32A	50 m	



Plastic CEE-extension					
EDP No.	Product ID No.	Cross section (mm²)	Plug + Coupling	Length	
108360	301656HG.15525.GG.57	5x2.5	CEE 5x16A	15 m	
108363	303256HG.15540.GG.57	5x4.0	CEE 5x32A	15 m	
108367	303256HG.15560.GG.57	5x6.0	CEE 5x32A	15 m	
108372	306356HG.155160.GG.57.WD	5x16.0	CEE 5x63A	15 m	
108361	301656HG.25525.GG.57	5x2.5	CEE 5x16A	25 m	
108364	303256HG.25540.GG.57	5x4.0	CEE 5x32A	25 m	
108368	303256HG.25560.GG.57	5x6.0	CEE 5x32A	25 m	
108370	306356HG.255160.GG.57.WD	5x16.0	CEE 5x63A	25 m	
108362	301656HG.50525.GG.57	5x2.5	CEE 5x16A	50 m	
108365	303256HG.50540.GG.57	5x4.0	CEE 5x32A	50 m	
108369	303256HG.50560.GG.57	5x6.0	CEE 5x32A	50 m	
108371	306356HG.505160.GG.57.WD	5x16.0	CEE 5x63A	50 m	

Waterproof IP67 design, phase inverter, different lengths, etc. available on request.

GIFAS-PU-Flex



For dry, damp and wet surroundings under mid-level mechanical strain. Good abrasion resistance of the outer sheath. Resistant against fuel and oil, diluted acids and caustics. To be used in building, farming, the chemical industry, sewage treatment plants, paper mills and similar.

- ozone and weather resistant - excellent tear strength and tear resistance - excellent flexibility - superior mechanical resistance - halogen-free insulation.

Model

Fine stranded, flexible copper strands, rubber insulated cores. VDE tested flame resistant construction outer sheath of polyurethane.

Technical data

Max. tolerable operating voltage	750V
Testing voltage	3.000V
Bending radius	7.5-times cable diameter
Operating temperature range	- 40°C to +90°C

GIFAS-PU-Flex-cable					
EDP No.	Product ID No.	Cross section (mm ²)	Copper no. kg/ 1000 m	Outside Ø (mm ²)	Weight kg/ 100 m
53278	4215.PU.GUIL.H07BQ-F	2x1.5	30	8.5	8.9
53118	4315.PU.GUIL.H07BQ-F	3x1.5	45	9.0	10.9
53282	4325.PU.GUIL.H07BQ-F	3x2.5	75	10.5	15.9
53286	4515.PU.GUIL.H07BQ-F	5x1.5	75	11.0	17.1
53287	4525.PU.GUIL.H07BQ-F	5x2.5	125	13.7	25.0
53292	4540.PU.GUIL.H07BQ-F	5x4.0	200	15.5	40.6
53294	4560.PU.GUIL.H07BQ-F	5x6.0	300	17.5	53.6

Free printing of the cable with your company name for orders over 100 m per dimension (see page 9).

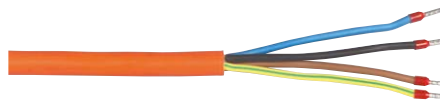


Plastic CEE-extension				
EDP No.	Product ID No.	Cross section (mm ²)	Plug + Coupling	Length
108415	301656HG.15525.PU.57	5x2.5	CEE 5x16A	15 m
108418	303256HG.15540.PU.57	5x4.0	CEE 5x32A	15 m
108421	303256HG.15560.PU.57	5x6.0	CEE 5x32A	15 m
108416	301656HG.25525.PU.57	5x2.5	CEE 5x16A	25 m
108419	303256HG.25540.PU.57	5x4.0	CEE 5x32A	25 m
108422	303256HG.25560.PU.57	5x6.0	CEE 5x32A	25 m
108417	301656HG.50525.PU.57	5x2.5	CEE 5x16A	50 m
108420	303256HG.50540.PU.57	5x4.0	CEE 5x32A	50 m
108423	303256HG.50560.PU.57	5x6.0	CEE 5x32A	50 m

Waterproof IP67 design, phase inverter, different lengths, etc. available upon request.



GIFAS-Thermflex-cable



Highly resistant to chemicals (ozone, oils, fat, many acids and caustics). The high mechanical resistance guarantees a very long serviceable life.

Model

Fine copper strands, bare, under VDE 0295 category 5.

Insulation

Cross-linked polyurethane under VDE 207 part 24 HI 2 flame resistant. Outer sheath of cross-linked polyurethane under VDE 0207 part 24 HM2. Orange outside cover.

Fire performance

Slight fire propagation, Minimal smoke development, Halogen-free, Silicon-free, oil-resistant, flame-resistant

Uses / application areas

As a connecting or interconnecting cable
- chemical factories - steel and aluminium plants, - paper mills,
- pharmaceutical industry - engineering, - automobile industry.

Technical data

Bending radius	10-times cable diameter
Temperature range	in motion: -20°C to +130°C fixed: -35°C to +130°C
Rated voltage	300 / 500V
Testing voltage	3.000V

GIFAS-Thermflex-cable					
EDP No.	Product ID No.	Cross section (mm ²)	Copper no. kg/ 1000 m	Outside Ø (mm ²)	Weight kg/ 100 m
11507	4215.THERMFLEX	2x1.5	30	6.4	8.5
11550	43075.THERMFLEX	3x0.75	22.5	5.9	6.0
11571	4315.THERMFLEX	3x1.5	45	6.8	9.2
27535	4325.THERMFLEX	3x2.5	75	8.3	15.3
11616	4415.THERMFLEX	4x1.5	60	7.6	11.5
11629	4425.THERMFLEX	4x2.5	100	9.2	18.5
11655	4515.THERMFLEX	5x1.5	75	8.3	15.0
11671	4525.THERMFLEX	5x2.5	125	10.1	23.0
26989	4715.THERMFLEX	7x1.5	105	10.0	23.5

Free printing of the cable with your company name for orders over 100 m per dimension (see page 9).

GIFAS-Thermoflex-cord



Model

Thermoflex cable especially fine stranded, highly flexible wires. With non-rewireable contour or Schuko plug 16A 230V with double earthing system.

On the other end the insulation is 50 mm stripped and the leads are equipped with end sleeves.

Thermoflex-Device connection cable				
EDP No.	Product ID No.	Cross section (mm ²)	Plug	Length
25314	K.3.4210.TH.H	2x1.0	contour plug 16A 230V for protected double insulated appliances	3 m
25320	K.5.4210.TH.H	2x1.0		5 m
25313	K.10.4210.TH.H	2x1.0		10 m
25335	K.3.4215.TH.H	2x1.5	contour plug 16A 230V for protected double insulated appliances	3 m
25348	K.5.4215.TH.H	2x1.5		5 m
25328	K.10.4215.TH.H	2x1.5		10 m
25360	S.3.4315.TH.H	3x1.5	Schuko plug 16A 230V	3 m
25361	S.5.4315.TH.H	3x1.5		5 m
25316	S.10.4315.TH.H	3x1.5		10 m

For orders of 25 pieces or more we print your company's name on the cords.(see page 9).

GIFAS-Proflexx-cord



Model

Proflexx cables with round pin attachment plug or Schuko plug 26A 230V, unilaterally fed, splash-proof and with a double earthing protection system.

On the other end the insulation is 50 mm stripped and the leads are equipped with end sleeves.

Proflexx-Device connection cable				
EDV-Nr.	Product ID No.	Cross section (mm ²)	Plug	Length
50654	K.3.4210.GG	2x1.0	contour plug 16A 230V for protected double insulated appliances	3 m
50655	K.5.4210.GG	2x1.0		5 m
50656	K.10.4210.GG	2x1.0		10 m
50657	K.3.4215.GG	2x1.5	contour plug 16A 230V for protected double insulated appliances	3 m
50658	K.5.4215.GG	2x1.5		5 m
50659	K.10.4215.GG	2x1.5		10 m
50660	S.3.4315.GG	3x1.5	Schuko plug 16A 230V	3 m
50661	S.5.4315.GG	3x1.5		5 m
50662	S.10.4315.GG	3x1.5		10 m

For orders of 25 pieces or more we print your company's name on the cords.(see page 9).



The GIFAS device connection cabling and the accompanying GIFAS built-in plug sockets, plugged, IPX4.

As per standard DIN VDE 0100 and ÖVE/ÖNORM E 8001, building sites, temporary appliances, damp and wet rooms, agricultural facilities, outdoor facilities, marinas, swimming baths and similar areas etc.

GIFAS-spiral cable



Model

Spiral cable with 200 mm straight ends on both sides, 40 mm stripped leads with end sleeves for strands.

Outer sheath: Polyurethane
Lead insulation: PVC

Technical data

Temperature range: -30°C to +80°C
Rated voltage: 300 / 500V to 1.0 mm²
450 / 750V from 1.5 mm²
Testing voltage: 3.000V

GIFAS-spiral cable

EDP No.	Product ID No.	Cross section (mm ²)	Spiral-length	Stretched length appr.	Color of outside covering
10455	SPK.0,9.4210	2x1.0	0.9 m	3.0 m	black
10477	SPK.0,6.4215	2x1.5	0.6 m	2.0 m	yellow
10458	SPK.0,9.4315	3x1.5	0.9 m	3.0 m	black
10451	SPK.0,6.44075	4x0.75	0.6 m	2.0 m	black
20156	SPK.0,5.4515	5x1.5	0.5 m	4.0 m	yellow

GIFAS-sided spiral cable with molded angle plug

EDP No.	Product ID No.	Cross section (mm ²)	Spiral-length	Stretched length appr.	Color of outside covering
10456	SPK.0,9.4210.WS	2x1.0	0.9 m	3.0 m	black
10459	SPK.0,9.4315.WS	3x1.5	0.9 m	3.0 m	black

Other dimensions and lengths on request.

GIFAS-Spiral cable grounding / earthing cable



Special features

The outer sheath (green/yellow) of the GIFAS-Spiral cable grounding is made of Polyether-Polyurethane. Thus it contains no Cadmium, FCKW, Halogen or Silicone. The outer sheath is oil resistant acc. to VDE 0472 part 803, seawater-resistant, shatterproof and impact-resistant, termite-resistant, ozone-resistant and to a great extent resistant against acids, caustics and solvents.

Special characteristics are low weight as well as resistance against temperature and corrosion. The wire is characterised by its resistance against shock and impact at high and low temperatures and a good resistance against pressure despite a relatively thin coating.

Application

- control-, measuring and laboratory engineering – chemical industry
- medicine and electrical engineering – automobile industry – apparatus engineering – pneumatic and hydraulic industry – foodstuff industry

Technical data

Temperature range: -40°C to +80°C (short-time +100°C)
Operating voltage: 1.000V
Testing voltage: 3.500V
Strand structure: finest stranded, category 6
Single conductor: EL Cu 58 F 21 blank soft
Conductor resistance: in accordance with DIN VDE 0295, IEC 60228
Cable diameter: 10 mm
Spiral length: approx. 600 mm
Stretched length: approx. 5000 mm

GIFAS-Earthing cable Chromium plated

EDP No.	Product ID No.	Cross section (mm ²)
74614	SPK.ERD.5M.4160.GN.GE.608.KS.M8	6
74613	SPK.ERD.5M.4160.GN.GE.2x608	6
74618	SPK.ERD.5M.41100.GN.GE.608.KS.M8	10
74615	SPK.ERD.5M.41100.GN.GE.2x608	10

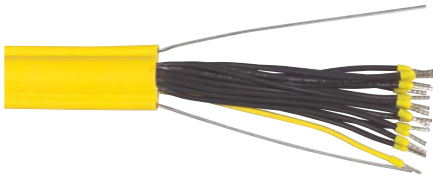
GIFAS-Earthing cable stainless steel

EDP No.	Product ID No.	Cross section (mm ²)
77971	SPK.ERD.5M.4160.GN.GE.608.INOX.KS.M8	6
75849	SPK.ERD.5M.4160.GN.GE.2X608.INOX	6
75848	SPK.ERD.5M.41100.GN.GE.608.INOX.KS.M8	10
77972	SPK.ERD.5M.41100.GN.GE.2X608.INOX	10

GIFAS-Earthing cable (sold by the metre)

EDP No.	Product ID No.	Cross section (mm ²)	Copper no. kg/ 1000 m
106306	41160.GN/GE	16.0	160

GIFAS-crane control cable



Crane and lift control cables

PVC outer sheath also flexible at low temperatures with two supporting steel wires which are integrated in the covering.

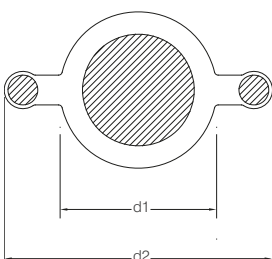
Application

- For control- and pushbuttons on cranes and conveyors
- Steel plants
- As freely suspended wires
- On high bay racks

Technical data

Lead identification	uni colored, continuously numbered according to VDE 0293, with earthing conductor in motion: - 30°C to + 70°C
Temperature range	at rest: - 40°C to + 70°C
Bending radius	forward-backward bending 12x cable diameter
Maximum tolerable operating voltage	500V
Testing voltage	3000V
Insulating resistance	min. 20MΩ
Carrying capacity	up to 135kg absolutely safe, the critical point is 190 kg (own weight of the cable must be considered)

GIFAS-crane control cable					
EDP No.	Product ID No.	Cross section (mm ²)	Copper no. kg/ 1000 m	Outside Ø (mm) d1 d2	Weight kg/ 100 m
44532	41810.2TY	18x1.0	180	17.0 / 32.0	52.8
44534	42510.2TY	25x1.0	250	21.0 / 36.0	66.0



CE

Cable Printing



Bulk Cables printing options

We print your cable free when you order a minimum quantity of 100 m per dimension:

- Company name
- Metering
- Harmonised cable type identification (e.g. H07RN-F 5G2.5).

For an additional charge we can print your cable from an order of 100 m per dimension also:

- Company Logo (the customer is able to preview the print in, black / white, jpg format, at least 100 dpi)
- Inventory Number
- Bar code

Device-connector sets printing options

For an additional charge we can print your with an order of at least 25 pieces per dimension, when purchased with cables:

- Company Name
- Harmonised cable type identification (e.g. H07RN-F 5G2.5).
- Logos (the customer is able to preview the print in, black / white, jpg format, at least 100 dpi)
- Inventory Number
- Bar code

Advantages

- no confusion
- theft protection
- Easy to trim
- Cable length is checked
- Clearly classified in accordance with standard ÖVE/ÖNORM E 8701 and DIN VDE 0701 / 0702.

Cable Printing		
EDP No.	Product ID No.	Description
104564	INKJET.AUFD RUCK.LOGO	Black print, customer logo on presentation
104565	INKJET.AUFD RUCK. INVENTARNUMMER	Black print, Inventory number after submission
104566	INKJET.AUFD RUCK.BAR-CODE	Black print, Barcode after submission

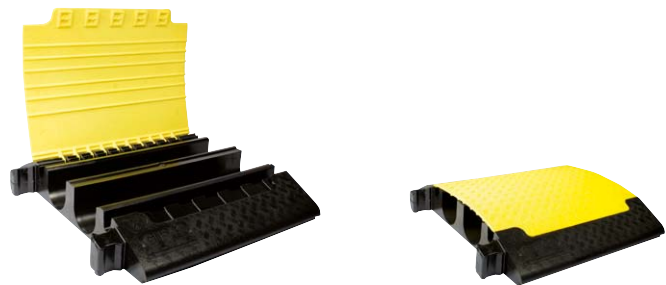
Cable bridges and hose bridge



The main assets at a glance

- Easy installation due to plug-in system
- Versatile in use
- Endlessly extendable
- Easy to retrofit
- Unbreakable
- Highly loadable
- Abrasion proof
- Non-slipping
- Insulating
- Temperature resistant
- Weather resistant
- Resistant against solvents, fuel, oil and salt resistant
- Longevity

Cable bridge - MEGA



Technical data

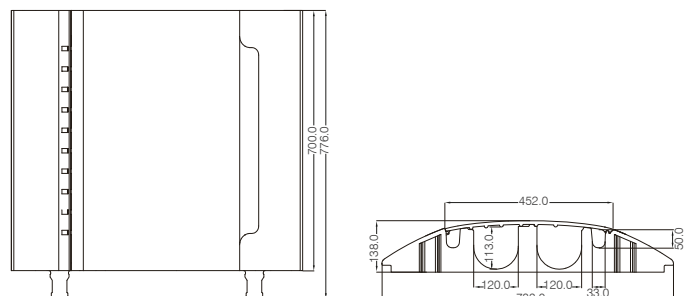
Material under part / upper part	Polyurethane (black) / Polyethylene (yellow)
Cable channels	Number: 4 channels Width: 33 / 120 / 120 / 33 mm Height: 50 / 113 / 113 / 50 mm
Dimensions L x W x H	700 x 783 x 139 mm
Weight	approx. 30.5 kg
Loading pressure	to 6 t / 400 cm ²
Fire resistance	in accordance with DIN 4102 – B2

Cable bridge - MEGA

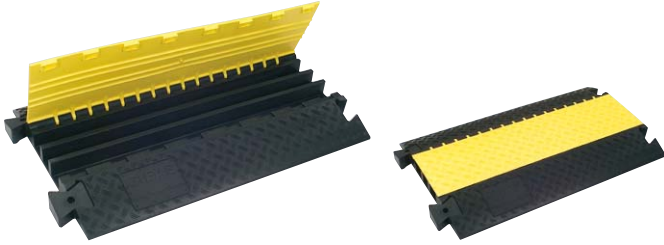
EDP No.	Product ID No.
81902	KABELBRÜCKE.750.700.145.MEGA

GIFAS-Cable bridges hose bridges to be used everywhere and for every purpose

- building sites
- streets
- boardwalks
- public areas
- entertainment districts
- showman
- fairgrounds
- concert halls
- festivity- and sports grounds
- open-air events
- radio, film and television
- production facilities
- company areas
- airports
- ports
- disaster operations
- military
- fire department
- and much more



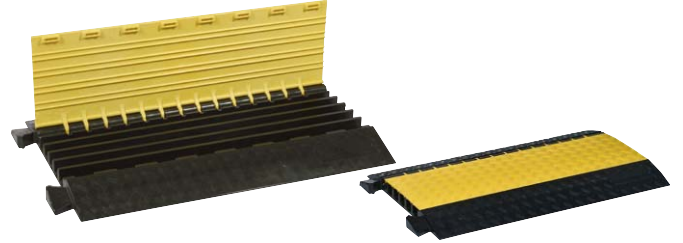
Cable bridge - PROTECT



Technical data

Material under part / upper part	Polyurethane (black) / Polyethylene (yellow)
Cable channels	Number: 3 channels Width: 53 / 46 / 58 mm Height: 50 mm
Dimensions L x W x H	1000 x 600 x 75 mm
Weight	approx. 22 kg
Loading pressure	5 t / 400 cm ²
Fire resistance	in accordance with DIN 4102 – B2

Cable bridge - MIDI



Technical data

Material under part / upper part	Polyurethane (black) / Polyethylene (yellow)
Cable channels	Number: 5 channels Width: 35 mm Height: 36 mm
Dimensions L x W x H	870 x 535 x 55 mm
Weight	approx. 12 kg
Loading pressure	to 5 t / 400 cm ²
Fire resistance	in accordance with DIN 4102 – B2

Cable bridges - PROTECT

EDP No.	Product ID No.
67898	KABELBRÜCKE.1000.600.75.PROTECT Cable bridges including 2 connecting pins

Cable bridges - MIDI

EDP No.	Product ID No.
72205	KABELBRÜCKE.870.542.52.MIDI

PROTECT Cable bridge accessories



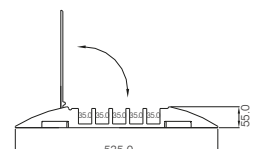
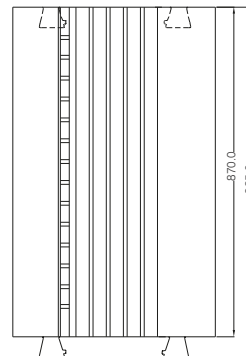
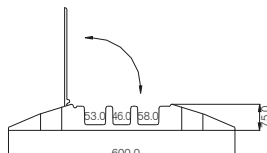
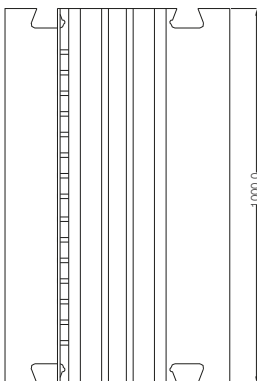
End ramp with cable outlet
– reducing hazard of tripping



connecting plugs
(1 pair as spare part)

Accessories Cable bridges - PROTECT

EDP No.	Product ID No.
67899	KABELBRÜCKE.ENDSTÜCK.PROTECT
67940	KABELBRÜCKE.VERBINDUNGSZAPFEN.GIFAS.1P



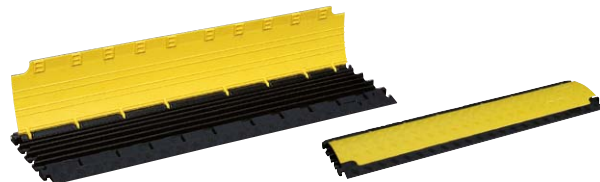
Cable bridge - PROTECT MINI



Technical data

Material under part / upper part	Polyurethane (black) / Polyethylene (yellow)
Cable channels	Number: 3 channels Width: 35 mm Height: 30 / 30 / 30 mm
Dimensions L x W x H	1000 x 290 x 48 mm
Weight	approx. 6 kg
Loading pressure	to 2 t / 400 cm ²
Fire resistance	in accordance with DIN 4102 – B2

Cable bridge - MICRO



Technical data

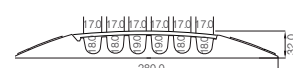
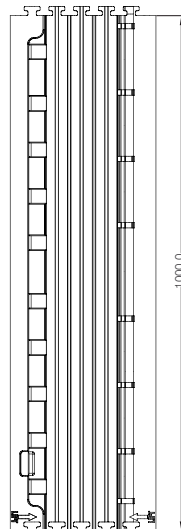
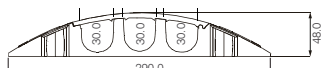
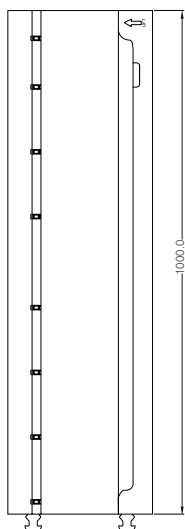
Material under part / upper part	Polyurethane (black) / Polyethylene (yellow)
Cable channels	Number: 6 channels Width: 17 mm Height: 18 / 18 / 19 / 19 / 18 / 18 mm
Dimensions L x W x H	1000 x 280 x 32 mm
Weight	approx. 4.4 kg
Loading pressure	to 2 t / 400 cm ²
Fire resistance	in accordance with DIN 4102 – B2

Cable bridge - Protect MINI

EDP No.	Product ID No.
86042	KABELBRÜCKE.1000.290.48.PROTECT.MINI

Cable bridge - MICRO

EDP No.	Product ID No.
89207	KABELBRÜCKE.1000.280.32.MICRO



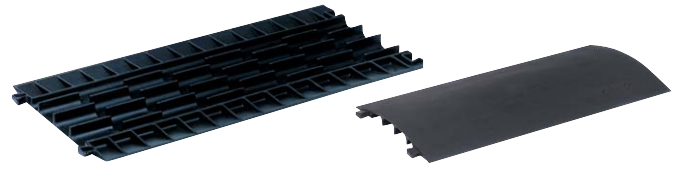
Cable bridge - JUNIOR



Technical data

Material under part / cover Polyurethane / ABS
 Cable channels Number: 3 channels
 Width: 17 / 23 / 17 mm
 Height: 24 mm
 Dimensions L x W x H 1000 x 250 x 34 mm
 Weight approx. 2.4 kg
 Loading pressure to 680 kg / 400 cm²
 Fire resistance class 1 UNI 9174 und UNI 8457

Cable bridge - MINI



Technical data

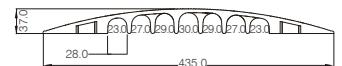
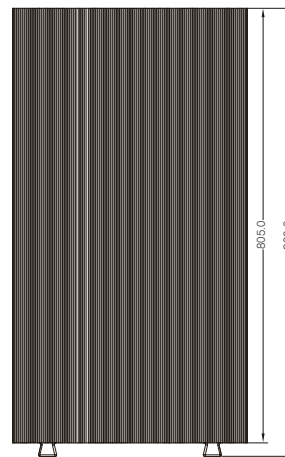
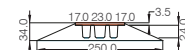
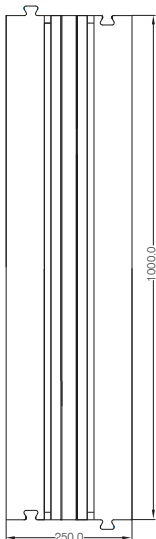
Material thermoplastic Polyurethane
 Cable channels Number: 7 channels
 Width: 28 mm
 Height: 23 / 27 / 29 / 30 / 29 / 27 / 23
 Dimensions L x W x H 805 x 435 x 37 mm
 Weight approx. 3.5 kg
 Loading pressure Pedestrians and Bicycles

Cable bridge - JUNIOR

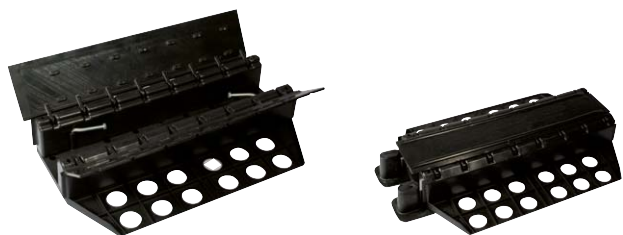
EDP No.	Product ID No.
61677	KABELBRÜCKE.1000.250.3.JUNIOR

Cable bridge - MINI

EDP No.	Product ID No.
72948	KABELBRÜCKE.800.435.40.MINI



SUBTERRA Underground cable bridge



Technical data

Material	polyamide / Polyurethane
Cable channels	Number: 1 channels Width: 113 mm Height: 100 mm
Dimensions L x W x H	760 x 570 x 150 mm
Weight	approx. 14 kg
Loading pressure	to 9 t / 400 cm ²
Fire resistance	in accordance with DIN 4102 – B2

Hose bridge



Technical data

Material	hard rubber
Cable channels	Number: 2 channels Width: 80 mm Height: 90 mm
Dimensions L x W x H	860 x 300 x 110 mm
Weight	approx. 11 kg
Loading pressure	40 t
Model	similar DIN 14820
Angle of gradient	approx. 15°

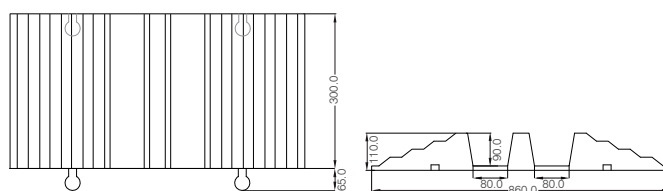
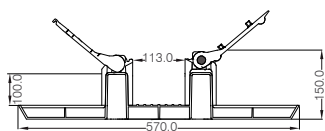
For fire brigades for laying out B and C hoses.

Cable bridge - SUBTERRA

EDP No.	Product ID No.
84237	KABELBRÜCKE.760.570.150.SUBTERRA

Hose bridges

EDP No.	Product ID No.
45466	SCHLAUCHBRÜCKE.865X307MM Hose bridge set = 2 pieces



Application examples / Customer Solutions



CONTACT US

Subject to technical changes 05/2022/1.0



GIFAS
ELECTRIC

GIFAS ELECTRIC
Gesellschaft m.b.H
Strass 2
5301 Eugendorf
AUSTRIA

🌐 www.gifas.at
✉ verkauf@gifas.at
☎ +43 6225/7191-0
📠 +43 6225/7191-561
☎ +49 8654/404-2000