

SYSTEMATIC QUALITY

# Testing and measuring equipment



## EasyCHECK 2

Page 4



Page 4

## Portable testing and measuring equipment

Pages 5 - 7



Page 5



Page 6 - 7

## Stationary and portable function and safety testing

Page 8



Page 8

## Testing adapter accessories

Pages 9 - 11



Page 9



Page 10



Page 11



Page 12

## Application examples

Pages 13 - 15

Application examples



Pages 13 - 15

### Device Tester EasyCHECK 2

With the device tester Easycheck 2 GIFAS ELECTRIC continues its tradition of building test units.

AUDITS according to ÖVE / ÖNORM E8701-1; ÖVE / ÖNORM E 8701-2-2 and DIN VDE 0701, DIN VDE 0702 testing after maintenance and modification and periodic inspection of electrical equipment, provide the basis for this instrument.

GIFAS-ELECTRIC has advanced his concept with the development of the EasyCHECK 2 and replaces the previous tester EC10. Due to the same dimensions, it is possible to adapt all previous testing units.

Networking, or also autonomous operation, grant depending on the application, maximum flexibility. Connectors for DVI, 2x USB 2.0 and an Ethernet interface RJ45 8pin., allow operation without integration into the companies operational hardware.

#### Master File Management:

The main information, such as type, series number, inventory number, manufacturer, electrical data, measuring method, test results, etc. can be acquired and evaluated.

#### Clients/company structures / departments:

Appliance management for different locations provides optimum transparency (divisions, subsidiaries, different companies, etc). The appliances are assigned to the respective client and can therefore be properly identified.

#### Test Lists:

Test lists can be generated according to individual criteria. You can generate a test list based on test date, department, defined appliances, supplier etc.

Today, safety is paramount for every company. Because of this, national and international safety standards have been introduced with the aim of preventing accidents.

These safety regulations force producers, users and maintenance workshops to undertake a series of checks (initial check, periodical checks, checks after maintenance and repair) and demand exact documentation of the test results.

#### Appliance Management – Web-based Software

In order to record and handle a large number of appliances, GIFAS developed software to supplement the Easy-CHECK. Communication with the Easy-CHECK occurs via an Ethernet connection. A web server accessed via a web browser displays the main part of the software. No additional software needs to be installed on the computer scheduled for operation. The test results are added to the master data in the test list. Individual tests can be made at any time. You can request and print any list or data you require, e.g. the latest test results at a given time. You can take all measurements on the spot and transfer all data to the database.

## Testing and measuring equipment EasyCHECK 2

### Digital – programmable – trendsetting

The microprocessor-controlled device tester Easycheck 2 allows the adjustment of individual functions to the respective regulations.

The type of measurement method, the display areas and the limits are programmable and can be customized according to specifications and regulations. Thus, the Easy Check 2 is equipped for any rules changes.

Certified according to EN 61010-1:2011

Safety regulations for electrical measurement, control, and laboratory devices



### Basic functions

**A-Measure:** Protective conductor resistance (4point-resistancy test)

Measurement range: 20mΩ – 2.000 mΩ

Measurement accuracy: 200mΩ – 2.000mΩ +/-5%

+/-2Digit (when used with KELVIN-measuring pliers)

**B-Measure:** Insulation resistance

Measurement range: 0,1MΩ – 10MΩ

Measurement accuracy: 0,1MΩ – 10MΩ +/-5% +/-2Digit

**C-Measure:** Leakage current

Measurement range: 0,2mA – 20mA

Measurement accuracy: 0,2mA – 20mA +/-5% +/-2Digit

**D-Measure:** Residual current – Direct measurement method

Measurement range: 0,2mA – 20mA

Measurement accuracy: 0,2mA – 20mA +/-5% +/-2Digit

**E.1-Measure:** Protective conductor current – Direct measurement method

Measurement range: 0,2mA – 20mA

Measurement accuracy: 0,2mA – 20mA +/-5% +/-2Digit

**E.2-Measure:** Protective conductor current - differential current measurement method using clamp

Measurement range: 0,2mA – 20mA

Measurement accuracy: 0,2mA – 20mA +/-10% +/-2Digit

**F-Measure:** Function test / Power Measurement (apparent power)

Measurement range U: 0 – 250VAC (TRMS)

Measurement accuracy U: +/-10% +/-2Digit

Measurement range I: 0,1 – 16A (TRMS)

### Basic Appliance

#### Included

- 1 Schuko socket (black) for test specimen measurement A, B, C
- 1 Schuko socket (blue) for test specimen D, E, F

#### Test lead

Clamp MultiContact XDK-KELVIN

#### Intervace

- 1 DVI
- 2 USB 2.0
- 1 Ethernet RJ45

#### External dimensions

260 x 180 x 120mm (L x W x D)

#### Display

Internal OLED display 4 lines or display port to DVI jack

#### Protection class I

Measuring category I

Rated voltage 630VDC

## Portable testing and measuring equipment EasyCHECK 2


**Dimensions:**

430 x 290 x 230 mm (L x W x D)

The measuring unit including all its extension modules is fitted in an aluminium box for protection. There are pockets in the box cover for accessories and the operation manual.

**Preset limited values are in accordance with:**

ÖVE/ÖNORM E 8701-1  
 ÖVE/ÖNORM E 8701-2-2  
 DIN VDE 0701  
 DIN VDE 0702

\* Details of the standard device EasyCHECK (Basic functions / measurement) on page 4.

GIFAS EasyCHECK 2			
EDP No.	Prod. ID No.	Measurement*	GIFAS EasyCHECK 2 Version
117839	PK.EC2	A, B, C, D, E, F	Basic version 230V in aluminium case
117840	PK.EC2.CEE.16A.32A	A, B, C, D, E, F A, B, C A, B, C A, B, C	Basic version 230V with additional built-in CEE-module 5x16A 400V, CEE-module 5x32A 400V, 5 safety laboratory sockets

Accessories		
EDP No.	Prod. ID No.	Description
79251	PK.PK2.P.7900.EC2.MESSZUBEHÖR.01	3 safety test lead black (2 m) 1 safety test lead blue (2 m) 1 safety test lead green (2 m) 5 clamps black 100 next testing date stickers
90953	EC2/10.BÜRSTENSONDE	Brush probe for testing of moving parts
27710	PRÜFSPITZE.SCHWARZ.1000V	Test probe for brush probe

## Portable testing and measuring equipment EasyCHECK 2



### Dimensions (Device in aluminum case):

580 x 470 x 230 mm (L x W x H)

For easy and fast testing of extension- and connecting cables as well as of electrical equipment as per:

ÖVE/ÖNORM E 8701-1  
ÖVE/ÖNORM E 8701-2-2  
DIN VDE 0701  
DIN VDE 0702

### Functions:

#### Test of cables:

- wiring continuity
- short circuit
- phase sequence

#### Continuity test:

- adjustable threshold value (up to 10Ω / 100Ω / 1kΩ / 1MΩ)
- optic display with light indicator
- acoustic signal (buzzer)

\*For details of the basic version of EasyCHECK 2 (basic functions/ tests) see page 4.

Device in aluminium case			
EDP No.	Prod. ID No.	Measurement*	GIFAS EasyCHECK Version
116915	PK2.EC2.KPR.31.1.D.M	A, B, C, D, E, F A, B, C A, B, C A, B, C A, B, C	Basic version 230V Schuko socket and appliance plug 16A 230V CEE socket and appliance plug 5x16A 400V CEE socket and appliance plug 5x32A 400V 2x5 safety laboratory sockets
85667	ALUKOFFER.EC2.TYP2.TELESKOPGRIFF.M		Movable rack with telescopic handle (Device in aluminium case)

Accessories		
EDP No.	Prod. ID No.	Description
79251	PK.PK2.P.7900.EC2.MESSZUBEHÖR.01	3 safety test lead black (2 m) 1 safety test lead blue (2 m) 1 safety test lead green (2 m) 5 clamps black 100 stickers next testing date
90953	EC2/10.BÜRSTENSONDE	Brush probe for testing of moving parts
27710	PRÜFSPITZE.SCHWARZ.1000V	Test probe for brush probe

## Portable testing and measuring equipment EasyCHECK 2


**Dimension (Device in aluminum case):**

580 x 470 x 230 mm (L x W x H)

For easy and fast testing of extension- and connecting cables as well as of electrical equipment as per:

ÖVE/ÖNORM E 8701-1  
 ÖVE/ÖNORM E 8701-2-2  
 DIN VDE 0701  
 DIN VDE 0702

with sockets for Schuko, CEE 5x16A, CEE 5x32A.

**Functions:**
**Cable test for Schuko, CEE 5x16A, CEE 5x32A extension cords:**

- wiring continuity
- short circuit
- phase sequence

A switch enables you to use the test sockets for testing either the extension cables or equipment with EasyCHECK 2\*.

\*For details of the basic version of EasyCHECK 2 (basic functions/ tests) see page 4.

EasyCHECK 2 im Alukoffer			
EDV-Nr.	Artikel-Nr.	Messungen*	GIFAS EasyCHECK 2 Version
117618	PK2.EC2.KPR.31.1.2CEE400V.M	A, B, C, D, E, F A, B, C A, B, C A, B, C A, B, C D, E D, E	Basic version 230V in aluminium case Schuko socket and appliance plug 16A 230V CEE socket and appliance plug 5x16A 400V CEE socket and appliance plug 5x32A 400V 2x5 safety laboratory socket CEE socket 5x16A 400V for test units CEE socket 5x32A 400V for test units  Entry 1/CEE appliance plug 5x32A 1/Schuko plug adapter for 32A CEE coupling with 5 poles.  Fusing 1/RCD 4 poles 40/0.03A therm. 1/MCB 3 poles 16A, 1 LS-switch 1 pole 16A 1/MCB 1 pole 10A, 1 emergency stop button
85667	ALUKOFFER.EC2.TYP2.TELESKOPGRIFF.M		Movable rack with telescopic handle

Accessories		
EDP No.	Prod. ID No.	Description
79251	PK.PK2.P.7900.EC10.MESSZUBEHÖR.01	3 safety test lead (2 m) 1 safety test lead blue (2 m) 1 safety test lead green (2 m) 5 clamps black 100 stickers next testing date
90953	EC2/10.BÜRSTENSONDE	Brush probe for testing of moving parts
27710	PRÜFSPITZE.SCHWARZ.1000V	Test probe for brush probe



## Stationary and portable function and safety testing device



### Possible functions

#### Testing of motors and appliances

- voltage measurement: 0 – 500VAC including selective switch
- current measurement with selective switch 15/25/50A
- reversing switch
- delta - wye switch on laboratory socket
- test sockets and laboratory socket

#### Adjustable AC and DC voltage

- ring core adjusting transformer 0-260V
- AC voltage outlet up to 10A
- DC voltage outlet via a bridge rectifier

#### Special voltages

- 50V / 200 Hz checking part

#### Continuity test

- optical and acoustic indication
- adjustable threshold values up to 10 Ω/100 Ω/1 kΩ/1 MΩ

#### Safety wiring

- earth leakage circuit breaker 30mA
- emergency switch unlocked with key

#### Cable testing unit

- testing extension cables for continuity, short-circuit and phase sequence for plugs.

#### EasyCHECK 2

- portable unit
- functions – see detailed description on page 4

A switch enables you to use the test sockets to either test extensions or appliances with EasyCHECK 2.

The stationary and portable function and safety testing equipment is manufactured based on customer requirements in order to provide optimum performance.

Design the optimum solution for your requirements with our engineers:





## Testing Adapter



Testing adapter for testing of three-phase current devices with EasyCHECK 2:

- contact electricity measurement (D)\*
- earthing wire power measurement (E)\*

\* These measurements are carried out under operating voltage.

Testing Adapter		
EDP No.	Prod. ID No.	Description
77922	P:2516.EC2/10.PRÜFADAPTER.01	Testing adapter for devices with CEE 5x16A 400V
79119	P:3020.EC2/10.PRÜFADAPTER.01	Testing adapter for devices with CEE 5x32A 400V
85865	P:3020.EC2/10.PRÜFADAPTER.08	Testing adapter for devices with CEE 5x16A 400V + 5x32A 400V
80815	P:7800.EC2/10.PRÜFADAPTER.01	Testing adapter for devices with CEE 5x16A 400V + 5x32A 400V + 5x63A 400V + 5x125A (Test with 63A) 400V

Other solutions available on request.

## Option Clamp Meter

### Option Clamp Meter for the protective conductor current measurement (E-metering) indirect method

This option allows the the measure of protective conductor current performance, using the differential current measurement method. To measure the fault currents, various adapters are available. See list.



Option Clamp Meter		
EDP No.	Prod. ID No.	Description
116807	EC2.STROMMESSZANGE.0-60A.5M.M	Electric measuring tongs 25x30 mm 0-60A AC 5 m Connection Cable

Option Adapter		
EDP No.	Prod. ID No.	Description
116829	111.0,53152.211.EC2	Schuko Test Fixtures EC2 for Protective conductor current measurement by means of Electric measuring tongs
116831	301656HG.0,55152.57.EC2	CEE 5x16A 400V Test Fixtures EC2 for Protective conductor current measurement by means of Electric measuring tongs
116832	303256HG.0,55402.57.EC2	CEE 5x32A 400V Test Fixtures EC2 for Protective conductor current measurement by means of Electric measuring tongs

## Option - Barcode reader



## Option - RFID reader



The barcode reader with USB connection enables the reading of barcode labels. This uniquely identifies each device, and the assigned measurements are released.

### Decoder code

Automatic detection of all standard linear codes and linear GS1 DataBar (TM) codes Extended reading distance with up to 60 cm

### Technical Data

Connection	USB, cable length 2 m
LED classification	IEC 60825-1 Class 1 LED Product
Protection class	IP52
Dimension	181 x 71 x 100 mm
Weight	169 g

The RFID reader with USB connection enables the reading of RFID code labels. This uniquely identifies each device, and the assigned measurements are released.

### Decoder code

13.56 MHz Transponder with ISO 15693, ISO 14443-3, ISO14443-4, MIFARE Ultralight®, MIFARE® Classic (1K / 4K), MIFARE DESFire®

### Technical Data

Connection	USB, cable connection 2 m
Dimension	240 x 120 x 35 mm

Barcode reader and Accessories		
EDP No.	Prod. ID No.	Description
134896	EC2.READER.BARCODE.USB.2M	READER FOR EC2 with USB connection - cable length 2m Barcode reader for 1D codes
87989	EC2/10.BARCODEETIKETT.51X25MM	barcode stickers – 51 x 25 mm plastic packaging unit: 500 pc

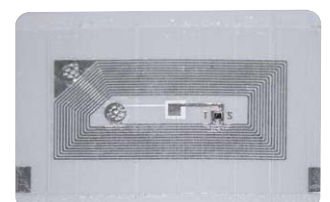
RFID reader and Accessories		
EDP No.	Prod. ID No.	Description
134899	EC2.READER.RFID.HF.USB.2M	READER FOR EC2 with USB connection - cable length 2m
87988	EC2/10.RFID.ETIKETT.19X37MM	RFID-stickers – 19 x 37 mm plastic with special glue, precoded incl. additional barcode label packaging units: 50 pc.
87987	EC2/10.RFID.ETIKETT.45X30MM	RFID-stickers – 45 x 30 mm plastic with special glue, precoded incl. additional barcode label packaging units: 50 pc.



Barcode-stickers



RFID-stickers - front side



RFID-stickers - rear side

## Appliance management web software Sample test sheet

Prüfprotokoll		<b>GIFAS</b> E L E C T R I C		
Prüfung von elektrischen Geräten Prüfgrundlage ÖVE ÖNORM E 8701-1/2				
Mandant:	Benutzerkontrolle	Telefonnummer:	+43(6225)7191	
Firma:	GIFAS Electric	Fax Nummer:	+43(6225)7191-13	
		E-Mail:	office@gifas.at	
	Pebering Straß 2 5301 Eugendorf	Web:	www.gifas.at	
Geräte Nummer:	1	Prüfintervall:	12 Monate	
Hersteller:	GIFAS	Spannung:	230 V	
Type, Bezeichnung:	Prima Light	Strom:	0,17 A	
Seriennummer:	65468	Leistung:	38 W	
Inventarnummer:	J4658L	Frequenz:	50 Hz	
Geräte Type:	Scheinwerfer 230V	Arbeitszug	:	
Abteilung:	Mechanische Abteilung			
Code:	305515			
Messgerät:	EasyCHECK2	Prüfung am:	17.09.2015	
Seriennummer:	2507-180079 V10.10 SW: V1.18	Nächste Prüfung:	17.09.2016	
Nächste Kalibrierung:	17.09.2016	Druck am:	18.09.2015	
Geprüft von:	Administrator	Prüfliste / Nr.:	1 / 2	
Messung	Messbereich	Messwert	Grenzwert	Ergebnis
Berührungsstrom:	0,10 - 20,00 mA	<0,1 mA	0,5 mA	OK
Funktionsprüfung:	23 - 4000 W 0,10 - 16,00 A	104 W 0,45 A		OK
<b>Ergebnis: Der Prüfling hat die Prüfung bestanden</b>				
Bemerkung:	Gerät leicht benutzt und Anschlußleitung gekürzt			
Prüfer: (Ort, Datum, Unterschrift, Stempel)				

Mandant: Benutzerkontrolle  
 Benutzer: Administrator  
 2507-180079 V10.10 SW: V1.18

---

Übersicht
Geräte
Suche
Prüflisten
Einstellungen
Administration

Geräte Gruppen

Name	Norm	A	B	C	D	E	Details	
Elektromotor bis 3,5kW SK I	EN60204	300 mΩ	1 MΩ	3,5 mA	0 mA	0 mA		
Handgef. E-Werkz. SK I	E8701.51	300 mΩ	1 MΩ	3,5 mA	0 mA	0 mA		
Handgef. E-Werkz. SK I m. EL.	E8701.51 Elektr.	300 mΩ	0 MΩ	0 mA	0,5 mA	3,5 mA		
Handgef. E-Werkz. SK II	E8701.52	0 mΩ	2 MΩ	0,5 mA	0 mA	0 mA		
Handgef. E-Werkz. SK II m. EL.	E8701.52 Elektr.	0 mΩ	0 MΩ	0 mA	0,5 mA	0 mA		
Haushaltsgeräte SK I	E8701.51	300 mΩ	1 MΩ	3,5 mA	0 mA	0 mA		
Haushaltsgeräte SK II	E8701.52	0 mΩ	2 MΩ	0,5 mA	0 mA	0 mA		
Heizg. SKI<=3,5kW	E8701.51	300 mΩ	0,3 MΩ	3,5 mA	0 mA	0 mA		

1-8 of 24



Application examples / customer solutions



EDP No. 79234



EDP No. 94291



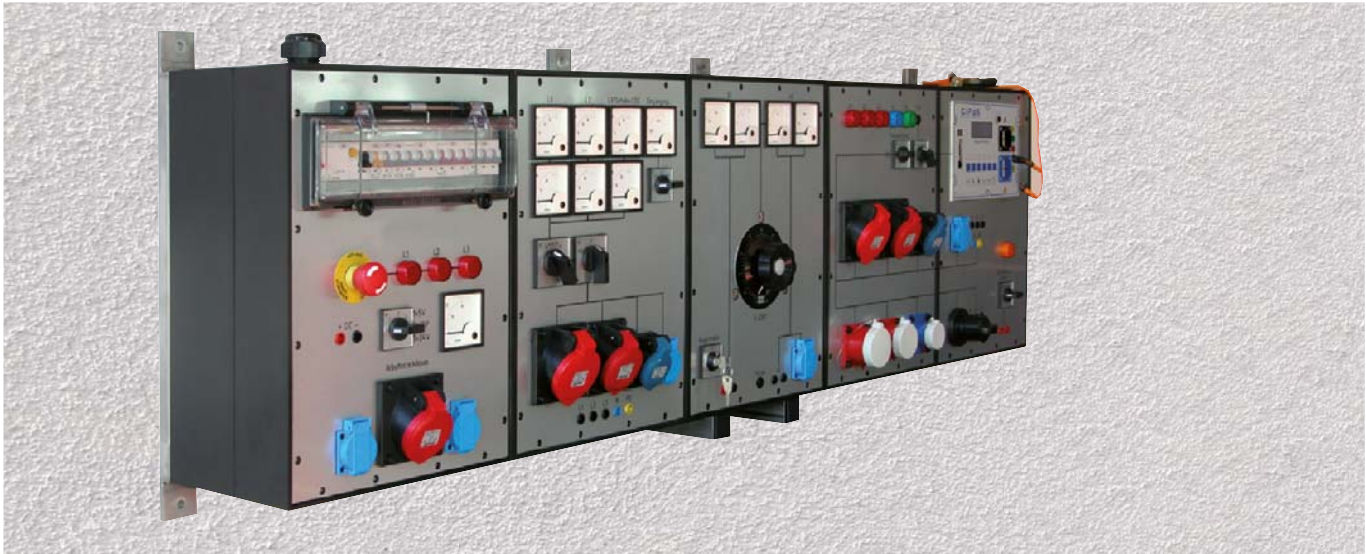
EDP No. 81823



EDP No. 80155



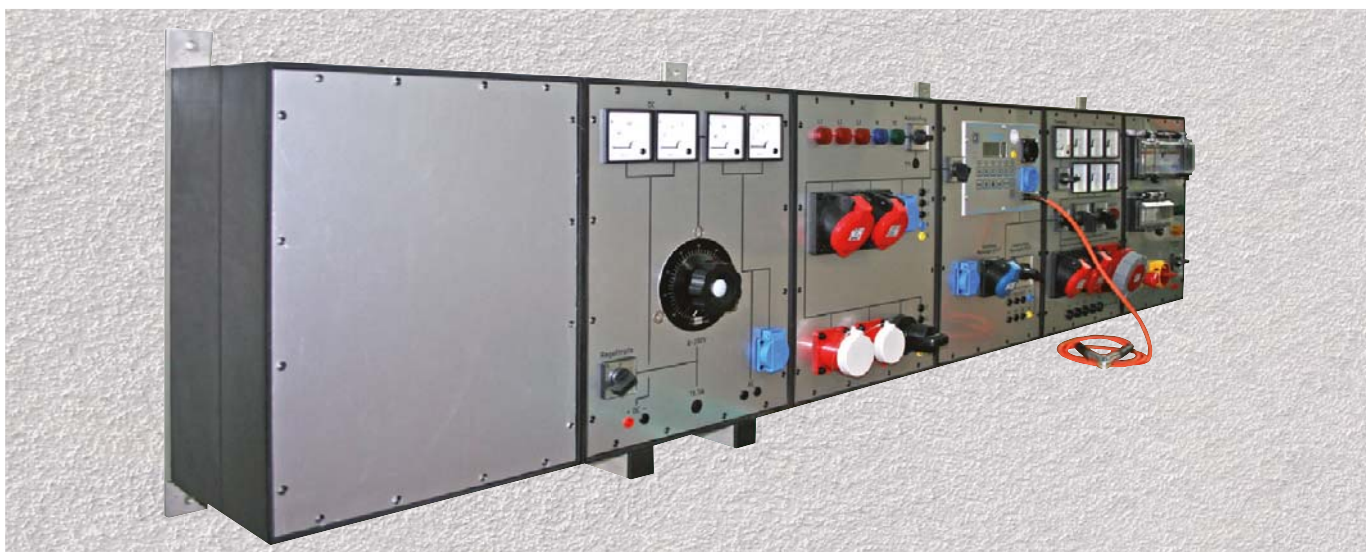
## Application examples / customer solutions



EDP No. 91403



EDP No. 75102

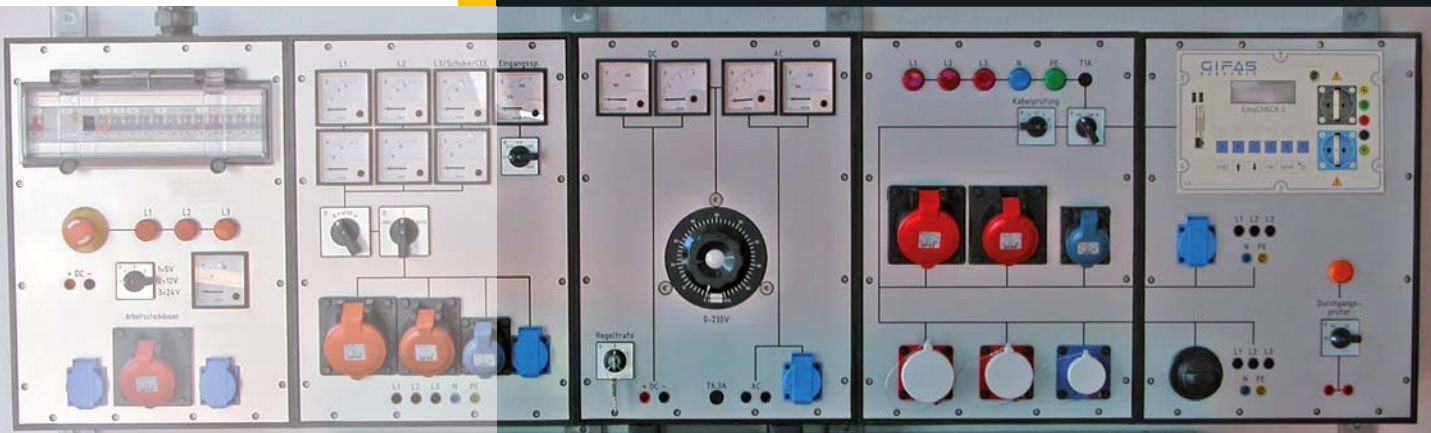


EDP No. 87553





# CONTACT US



**GIFAS**  
ELECTRIC

GIFAS ELECTRIC  
Gesellschaft m.b.H  
Strass 2  
5301 Eugendorf  
AUSTRIA

www.gifas.at  
verkauf@gifas.at  
+43 6225/7191-0  
+43 6225/7191-561  
+49 8654/404-2000