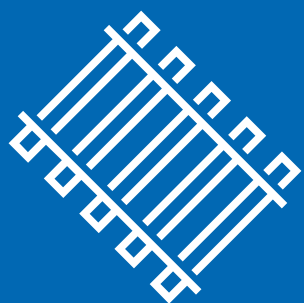




SYSTEMATIC QUALITY



RAIL WORLD

Sustainable Power for Clear Paths.



GIFAS ELECTRIC stands for innovative and sustainable solutions in the field of electrical engineering, with a particular focus on construction sites, safety, traffic, industry, and municipal facilities. The philosophy of GIFAS ELECTRIC is to create lasting safety through dynamic processes.

Under the motto "Something that lasts," we emphasize collaborative partnerships with our customers and develop cost-effective solutions that ensure both efficiency and safety. Lean processes and continuous improvement enable us to act flexibly and with a strong customer focus. We distribute standard products through retail partners, allowing us to concentrate on customized project solutions.



Nedjeljko Gajic  
Key Account Manager Export  
☎ +43 6225 / 7191-523  
📱 +43 664 / 824 19 70  
✉ [n.gajic@gifas.at](mailto:n.gajic@gifas.at)



Christoph Kloiber  
Sales Support Engineer  
☎ +43 6225 / 7191-531  
📱 +43 664 / 135 55 40  
✉ [c.kloiber@gifas.at](mailto:c.kloiber@gifas.at)



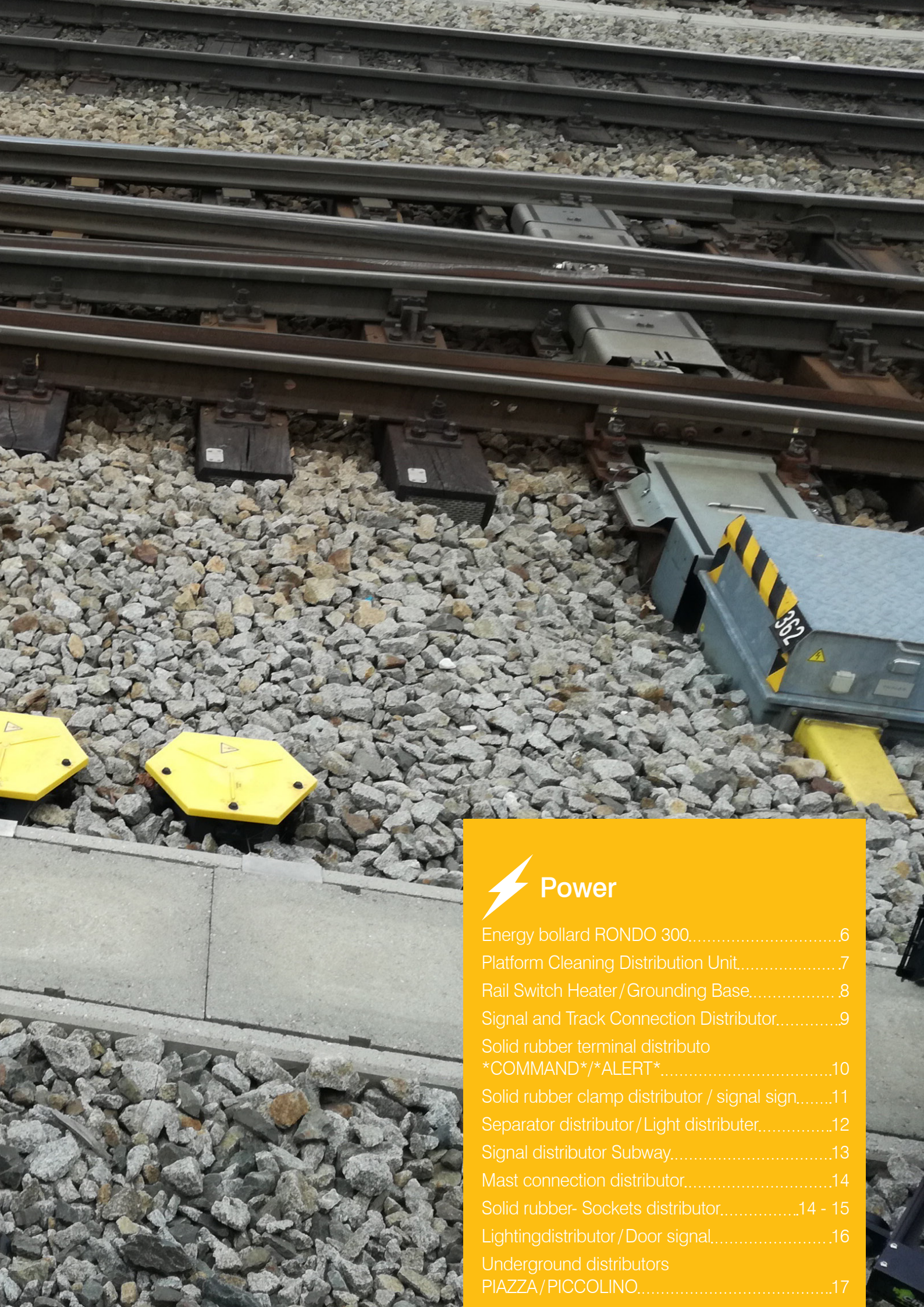
## POWER

|   |       |
|---|-------|
| Energy bollard RONDO 300.....                               | 6     |
| Platform Cleaning Distribution Unit .....                   | 7     |
| Rail Switch Heater / Grounding Base .....                   | 8     |
| Signal and Track Connection Distributor .....               | 9     |
| Solid rubber terminal distributor *COMMAND* / *ALERT* ..... | 10    |
| Solid rubber Clamp distributor / signal sign .....          | 11    |
| Separator distributor / Light distributor.....              | 12    |
| Signal distributor Subway .....                             | 13    |
| Mast connection distributor .....                           | 14    |
| Solid rubber- Sockets distributor.....                      | 14-15 |
| Lighting distributor / Door signal .....                    | 16    |
| Underground distributors PIAZZA / PICCOLINO .....           | 17    |

## LIGHT

|   |       |
|---|-------|
| Protection tube lights StreamLED Power .....              | 22    |
| System lights AmbitLED .....                              | 23    |
| Street lights GIFAS StreetLED .....                       | 24    |
| Area lighting PLAZA FlatLED FLOOD .....                   | 25    |
| Hall lighting DeltaLUX 2 HT .....                         | 26    |
| Industrial spotlights I-LED 5.17 / 5.28 .....             | 27    |
| Handrail LaneLED INOX 42 .....                            | 28-29 |
| Battery lights / Rechargeable lights GIFAS TorchLED ..... | 30    |
| Battery lights / Rechargeable lights FlashLED 2 .....     | 31    |





## Power

|  |         |
|--|---------|
| Energy bollard RONDO 300.....                              | 6       |
| Platform Cleaning Distribution Unit.....                   | 7       |
| Rail Switch Heater /Grounding Base.....                    | 8       |
| Signal and Track Connection Distributor.....               | 9       |
| Solid rubber terminal distributo<br>*COMMAND*/*ALERT*..... | 10      |
| Solid rubber clamp distributor / signal sign.....          | 11      |
| Separator distributor/Light distributer.....               | 12      |
| Signal distributor Subway.....                             | 13      |
| Mast connection distributor.....                           | 14      |
| Solid rubber- Sockets distributor.....                     | 14 - 15 |
| Lightingdistributor/Door signal.....                       | 16      |
| Underground distributors<br>PIAZZA/PICCOLINO.....          | 17      |

## RONDO 300 - stainless steel powder-coated



The bollard is mounted using a flange plate on a solid ground outlet (concrete base provided on-site) or on a bollard ground installation unit with rotation protection. Once installed and connected to the power supply, the bollard is immediately operational and ready for use. It is made of high-quality stainless steel V2A. The surface is powder-coated with a textured outer layer in white aluminum and pine green, or available in silk-matte powder coating in all standard RAL colors. Optional connections for water and wastewater can be integrated upon request.

The bollard door is lockable with a half-cylinder lock and can be opened up to 90°.

On the rear side, two half-shells are provided for winding extension cables.

The Rondo 300 has a diameter of 304 mm, a height of approximately 1200 mm, and a weight of around 45 kg.

## RONDO 300 - Solid rubber junction boxes Series 3x3020

### Dimensions

900x200x110 mm (HxWxD)

The housing is made of self-extinguishing butyl rubber, offering high resistance to oils, acids, and alkalis. All protective components are splash-proof, secured under impact-resistant Makrolon covers. Four wall-mounting points ensure complete protective insulation.

### Equipment

2/Cable glands M40 (clamping range 18-32 mm)

1/Cable gland M20 with YF25 mm<sup>2</sup> green/yellow

3/Universal terminal blocks 50 mm<sup>2</sup>/2 grey

1/Universal terminal block 50 mm<sup>2</sup>/2 blue

1/Universal terminal block 35 mm<sup>2</sup> green/yellow

1/RCD 4pol. 63/0,1A type XF selective

1/RCD 4pol. 63/0,03A type XF G

1/MCB 3pol. 32A type C

1/MCB 3pol. 16A type C

3/MCB 1pol. 16A type C

1/Solid rubber CEE coupling 5x32A, 400V with 1.5 m Proflexx cable H07RN-F yellow 5x4.0 mm<sup>2</sup>

1/Solid rubber CEE coupling 5x16A, 400V with 1.5 m Proflexx cable H07RN-F yellow 5x2.5 mm<sup>2</sup>

3/Schuko sockets 16A, 230V with flap lid and enhanced sealing

| EDP No. | Product ID No.                                  |
|---------|---|
| 133672  | ÖBB.RONDO.300.1500.V2A.PB.3.3020.319377.2020.01 |

## RONDO 300 - stainless steel brushed



The bollard is mounted on a concrete base or a ground installation unit using a flange plate, and connected to the power supply. Once the internal distribution units are connected, the bollard is ready for operation. The surface is made of brushed stainless steel (V2A), offering a sleek and modern appearance.

The water connection is provided on-site.

The lockable bollard door is equipped with a latch lock designed for a customer-supplied half-cylinder and a quarter-turn latch.

The interior features two supplied mounting reels (brackets) and a Velcro strap for organized cable storage.

The Rondo 300 has a diameter of 304 mm, a height of approximately 1500 mm, and a weight of around 45 kg.

## RONDO 300 - Solid rubber junction boxes Series 2x2516

### Dimensions

500x160x90 mm (HxWxD)

The housing is made of self-extinguishing butyl rubber, offering high resistance to oils, acids, and alkalis. All protective components are splash-proof, secured under impact-resistant Makrolon covers. Four wall-mounting points ensure complete protective insulation.

### Equipment

1/Cable gland M32 (clamping range 14-25 mm)

1/Cable gland M25 (clamping range 9-18 mm)

1/Cable gland M16 (clamping range 3,5-10 mm) - water and heating

1/Cable gland M16 (clamping range 3,5-10 mm) - grounding for bollard

1/RCD 4pol. 63/0,03A type XF

1/MCB 3pol. 16A

3/MCB 1pol. 16A

1/MCB 1pol. 4A

1/CEE coupling 5x16A 400V

3/Schuko sockets 16A 230V with flap lid and enhanced sealin

| EDP No. | Product ID No.                                    |
|---------|---|
| 144374  | RONDO.300.V4A.GEB.2.2516.1937.40.XF.1M32.1DW.3/4" |
| 144389  | RONDO.300.BODENTEIL.V4A.400X400.H100-150.01.M     |
| 141070  | RONDO.300.BODENTEIL.V4A.400X400.H150-200.01.M     |

## Platform – cleaning distributor



The platform cleaning distributor features a robust construction and versatile customization options.

The energy column is made of high-quality V2A stainless steel. The surface is powder-coated, with the desired color selectable upon request. The door is equipped with a lock case for a customer-supplied half-cylinder and a lockable rotary latch (triangular key).

The platform cleaning distributor has a height of 1500 mm, a width of 250 mm, and a depth of 200 mm.

### Solid Rubber Installation Distributor Series 3x2516

#### Dimensions

160x750x90 mm (HxWxD)

The housing, made of vulcanized, self-extinguishing butyl rubber, is resistant to oils, acids, and alkalis, and is unaffected by welding and spark eruptions. The protective components are splash-proof and integrated under two impact-resistant, transparent Makrolon covers.

#### Equipment

1/Cable gland M32 (clamping range 14-25 mm)

1/Cable gland M16 (clamping range 3,5-10 mm)

1/Cable gland M12 with YF6 mm<sup>2</sup> for grounding

3/Universal terminal blocks 16 mm<sup>2</sup>

1/Universal terminal block 16 mm<sup>2</sup> blue

1/Universal terminal block 16 mm<sup>2</sup> green/yellow

1/RCD 4pol. 40/0,1A type XF \*selective\*

1/RCD 4pol. 40/0,03A type XF \*G\*

1/MCB 3pol. 16A

1/MCB 1pol. 16A

1/MCB 1pol. 4A

1/Solid rubber CEE coupling 5x16A 400V

1/Schuko socket 16A 230V with lap lid and enhanced sealing

1/Ceiling bracket 3/4" with ball valve and 1.5 m self-regulating heating tape.

Water connection spatially separated from power supply connection.

1/Aluminum rail mounting plate for connecting 3 aluminum cables 100 mm<sup>2</sup> M16

| EDP No. | Product ID No.                                |
|---------|---|
| 108458  | ÖBB.V.1500.250.200.3.2516.19177.XF.UT.M32.ALU |



## All-rubber junction box for point heating

Type 6400 hexagonal



### Model All-rubber junction box for point heating

Breakproof, impact resistant housing of vulcanized butyl rubber vibration absorbing all-rubber material with integrated all-rubber fitting blocks

- No condensation in case of strong temperature fluctuations
- Resistant against showers of emitted sparks
- Corrosion-resistant
- High resistance against UV radiation, ozone and atmospheric conditions
- Free of halogen and silicone
- Absolutely free of halogens
- Type of protection: IP65
- Protection class: II
- Impact Proof: IK10
- Glow wire test, IEC 60695-2-1 with 960°C (certificate)
- Needle flame test, DIN EN 60695-11-5; 2005-11
- TSI fire class rating „B“ EN 13501-1
- High voltage dielectric strength according to standard IEC 60243
- Yellow hinged covers of high quality plastic material equipped with integrated seal and non-slip ribbing.
- External locking blocks black made of high quality plastic.
- Locking plugs black made of high quality plastic.

The locking pins can be easily opened, but only with a tool and by means of a quarter-turn lock. Weather-resistant gaskets are installed between the lid and the locking blocks at the locking points.

### Dimensions

diagonal 264 mm, height 160 mm

### Equipment

2/Cable glands M32 (clamping range 14-25 mm) with dummy discs

6/Cable glands M20 (clamping range 14-25 mm) with dummy discs

### Cover Labelling

1x Electric lightning sign black in black triangle on yellow background

1x Point heating

3x Auf – Zu (open - close) at each locking plug

| EDP No. | Product ID No.                     |
|---------|------------------------------------|
| 840622  | 76.6400.WHZ.6M20.2M32.STEG.2013.01 |

A threaded socket is located on the underside of the housing for attaching standard grounding feet.

## Ground foot

All-rubber junction box for point heating /  
Signal and track connection



### Ground foot

- Hot-dip galvanized or plastic PA6
- Length 450 mm
- Point heating connection box and signal-clamping distributor KV-G90/95/98

| EDP No. | Product ID No.                                  |
|---------|---|
| 107405  | ÖBB.ERDFUSS.450MM                               |
| 840706  | ERDFUSS.KUNSTSTOFF.PA6.GF30.SCHWARZ.EF170.450MM |





## Signal and track connection



### Solid rubber signal junction box, Series 2518/2612/2712

Breakproof, impact resistant housing of vulcanized butyl rubber vibration absorbing all-rubber material with integrated all-rubber fitting blocks

- No condensation in case of strong temperature fluctuations
- Resistant against showers of emitted sparks
- Corrosion-resistant
- High resistance against UV radiation, ozone and atmospheric conditions
- Free of silicone
- Absolutely free of halogens
- Type of protection: IP65
- Protection class: II
- Impact Proof: IK10
- Glow wire test, IEC 60695-2-1 with 960°C (certificate)
- Needle flame test, DIN EN 60695-11-5; 2005-11
- TSI fire class rating „B“ EN 13501-1
- High voltage dielectric strength according to standard IEC 60243
- Lid in yellow, made of high-quality plastic, with integrated double gasket and ribbing (anti-slip design)
- External locking blocks in black, made of high-quality plastic
- Locking pins in black, made of high-quality plastic

The locking pins can be easily opened, but only with a tool and by means of a quarter-turn lock. Weather-resistant gaskets are installed between the lid and the locking blocks at the locking points.

### Cover Labelling

2x Auf – Zu (open - close) at each locking plug

### Dimensions Series 2518

250 x 180 x 120 mm

### Dimensions Series 2612

260 x 120 x 85 mm

### Dimensions Series 2712

260 x 120 x 116 mm

### Equipment Series 2518

1/Conical cable gland M32 including cut-out sealing ring with blind disc  
4/Conical cable glands M25 with cut-out sealing ring thereof, 3 pieces are closed with dummy discs

2/Alloy bars prepared for mounting of each 2 pc. STV2/10

### Equipment Series 2612/ Series 2712

3/Conical cable glands M25 with cut-out sealing ring thereof, 2 pieces are closed with dummy discs

1/Akuminium rail prepared for mounting of each 2 pc. STV2/10

## Signal and track connection for axle counter



### Solid rubber signal junction box Serie 1812

Breakproof, impact resistant housing of vulcanized butyl rubber vibration absorbing all-rubber material with integrated all-rubber fitting blocks

- No condensation in case of strong temperature fluctuations
- Resistant against showers of emitted sparks
- Corrosion-resistant
- High resistance against UV radiation, ozone and atmospheric conditions
- Free of silicone
- Absolutely free of halogens
- Dielectric strength 7kV / mm according to EN60243
- Classification Fire behaviour „B“ according to ÖNORM EN 13501-1 according to TSI (fire class)
- Pressure and suction tested for use in railway tunnel with high speed traffic up to 350 km / h according to TSI
- Cover off high-quality plastic in yellow, with inlaid seal
- Outer locking blocks black made of high-quality plastic
- Locking pin black made of high-quality plastic

The locking pins can be easily opened, but only with a tool and by means of a quarter-turn lock. Weather-resistant gaskets are installed between the lid and the locking blocks at the locking points.

### Dimensions Series 1812

180 x 125 x 90 mm

### Equipment Series 1812

3/Cable glands M20 (clamping range 7-14 mm) incl. sealing ring 5 mm and thrust ring and blind plug

8/Disconnect terminals STS 2,5-MT grey, labeled 1-8, on DIN rail

Incl. 2/holes for mounting on ground foot

| EDP No. | Product ID No.                       |
|---------|--------------------------------------|
| 840658  | 1812.8STS2,5-MT.3M20.METR.5MM.RLY.01 |

| Signal and track connection |                            |
|-----------------------------|----------------------------|
| EDP No.                     | Product ID No.             |
| 840585                      | 2518.KV90.98.2.ALUSCHIENEN |
| 840588                      | 2612.KV-G95                |
| 840587                      | 2712.KV-G98                |

## Solid rubber terminal distributor for switchgear



**Solid rubber terminal distributor Switchgear \*COMMAND\* Series 7800**  
ÖVE-tested

### Dimensions

500x360x133 mm (WxHxD)

### Model

Breakproof, impact resistant housing of vulcanized butyl rubber vibration absorbing all-rubber material with integrated all-rubber fitting blocks

- Vibration-absorbing solid rubber material
- No condensation in case of strong temperature fluctuations
- Resistant against showers of emitted sparks
- Corrosion-resistant
- High resistance against UV radiation, ozone and atmospheric conditions
- Free of halogen and silicone
- Self-extinguishing (needle flame test according to DIN EN 60695-11-5)

### Equipment

- 1/Cable gland M40 (clamping range 18-32 mm)
- 10/Cable glands M20 (clamping range 7-14 mm) incl. blind plugs
- 12/Universal tension spring clamps STTB 2,5 mm²
- 6/Universal tension spring clamps ST 2,5 mm² QUATTRO blue

With 2 aluminum brackets on the back of the housing, adjustable for profiles 170 - 200 mm, with mounted C-rail for strain relief.



**Solid rubber terminal distributor Switchgear \*ALERT\* Series 7800**  
ÖVE-tested

### Dimensions

500x360x133 mm (WxHxD)

### Model

Breakproof, impact resistant housing of vulcanized butyl rubber vibration absorbing all-rubber material with integrated all-rubber fitting blocks

- Vibration-absorbing solid rubber material
- No condensation in case of strong temperature fluctuations
- Resistant against showers of emitted sparks
- Corrosion-resistant
- High resistance against UV radiation, ozone and atmospheric conditions
- Free of halogen and silicone
- Self-extinguishing (needle flame test according to DIN EN 60695-11-5)

### Equipment

- 1/Cable gland M40 (clamping range 18-32 mm)
- 10/Cable glands M20 (clamping range 7-14 mm) incl. blind plugs
- 12/Universal tension spring clamps STTB 2,5 mm²
- 6/Universal tension spring clamps ST 2,5 mm² QUATTRO blue

With 2 aluminum brackets on the back of the housing, adjustable for profiles 170 - 200 mm, with mounted C-rail for strain relief.

| EDP No. | Product ID No.                                   |
|---------|--|
| 840624  | ÖBB.7800.12STTB2,5.6ST2,5.11KV.10BST.BEF.2017.01 |

| EDP No. | Product ID No.                                  |
|---------|---|
| 840625  | ÖBB.7800.12STTB2,5.6ST2,5.11KV.10BST.ME.2017.01 |





## Solid rubber - Clamp distributor



Breakproof, impact resistant housing of vulcanized butyl rubber vibration absorbing all-rubber material with integrated all-rubber fitting blocks

- Vibration-absorbing solid rubber material
- No condensation in case of strong temperature fluctuations
- Resistant against showers of emitted sparks
- Corrosion-resistant
- High resistance against UV radiation, ozone and atmospheric conditions
- Free of halogen and silicone
- Self-extinguishing (needle flame test, DIN EN 60695-11-5; 2005-11)
- Glow wire test, IEC 60695-2-1 with 960°C (certificate)
- TSI fire class rating „B“ EN 13501-1
- High voltage dielectric strength according to standard IEC 60243
- ÖVE tested

### Solid rubber - Clamp distributor 50 Trough

#### Dimensions

360x500x133 mm (WxHxD)

#### Equipment

- 2/Cable glands M50 (clamping range 24-38,5 mm)
- 1/Cable gland M32 (clamping range 14-25 mm)
- 8/Universal terminal blocks 50 mm<sup>2</sup> vibration-resistant
- 1/LBS 3pol. 35A
- 4/Terminal blocks 16 mm<sup>2</sup>
- 2/End angle

| EDP No. | Product ID No.                               |
|---------|--|
| 71528   | ÖBB.7800.8UKH50.4UK16.3M.2003.02             |
| 71532   | ÖBB.7800.8UKH95.4UT16.KLAD.1M32.2M50.1BST.02 |

### Clamp distributor Lights and buttons

#### Dimensions

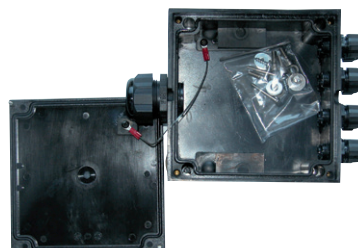
300x200x110 mm (WxHxD)

#### Equipment

- 3/Cable glands M32(clamping range 14-25 mm)
- 1/Cable gland M25 (clamping range 9-18 mm)
- 3/Cable glands M20 (clamping range 7-14 mm)
- 1/Cable gland M16 (clamping range 3,5-10 mm)
- 4/Universal terminal blocks 10 mm<sup>2</sup>
- 1/Universal grounding terminal 16 mm<sup>2</sup>
- 4/Universal tension spring clamps 2,5 mm<sup>2</sup>
- 3/Universal ground terminal 2,5 mm<sup>2</sup>
- 6/Universal tension spring clamps 1,5 mm<sup>2</sup> Quattro
- 1/LBS 3pol. 6A

| EDP No. | Product ID No.                  |
|---------|---------------------------------|
| 71534   | ÖBB.3020.4UK10.5ST2,5.KLAD.2003 |

## Clamp distributor signal sign right + left



### Clamp distributor signal sign right + left

ÖVE tested

#### Dimensions

160 x 160 x 90 mm (WxHxD)

#### Model

Breakproof, impact resistant housing of vulcanized butyl rubber vibration absorbing all-rubber material with integrated all-rubber fitting blocks

- Vibration-absorbing solid rubber material
- No condensation in case of strong temperature fluctuations
- Resistant against showers of emitted sparks
- Corrosion-resistant
- High resistance against UV radiation, ozone and atmospheric conditions
- Free of halogen and silicone
- Self-extinguishing (needle flame test, DIN EN 60695-11-5; 2005-11)
- Glow wire test, IEC 60695-2-1 with 960°C (certificate)
- TSI fire class rating „B“ EN 13501-1
- High voltage dielectric strength according to standard IEC 60243

#### Equipment

- 1/Cable gland M32 (clamping range 14-25 mm)
- 8/Cable glands M16 hereof 4 Pieces with dummy discs
- 1/Fuse cable for cover
- 2/Rubber pads for fixing of the clamping block (Screws for rail fastening included)
- 4/Screw threads M6x12 on the back of the housing for attachment to the signal sign
- 1/Mounting screw kit included:
  - 4 Cylinder screws M6x16 VA, 4 Washers M6 VA, 4 Snap rings M6 VA

| EDP No. | Product ID No.                               |
|---------|--|
| 133398  | ÖBB.1616.MZB1,5.1M12.DRU.8M16.1M32.GR.RECHTS |
| 133404  | ÖBB.1616.MZB1,5.1M12.DRU.8M16.1M32.GR.LINKS  |

## Disconnecter distributor



### Solid rubber boxes Series 7900

ÖVE tested

- Housing made of vulcanized, self-extinguishing butyl rubber.
- Free of halogen and silicone
- UV-resistant and resistant to oils, various acids, and alkalis
- Resistant to welding sparks and splatter
- Equipped with T-handle and latch lock for on-site half-cylinder
- Lockable Makrolon door, hinged on the right side

### Dimensions

360x500x173 mm (W x H x D)

### Equipment

- 3/Cable glands with shrink part 28,5/12,7 mm
- 3/Cable glands M32 (clamping range 14-25 mm)
- 1/NH isolator size 01 (without cartridges)
- 1/Knife Disconnecter

| EDP No. | Product ID No.                                |
|---------|---|
| 117714  | ÖBB.79T.1NH01.2DR.T-GR.RIEGEL.3M32.3CES3.ALU  |
| 117286  | ÖBB.7800T.3800.1NH02.2DREHR.3M32.3CES3.ALU.02 |

## Light distributor



### Lighting terminal box for switchgear frame

Solid rubber boxes Series 3020 incl. mounting plate V2A

With 4 welded nuts M16 for attachment in the steel mast as well as with a rain cover.

### Bestückung

- 3/Cable glands M20 (clamping range 7-14 mm) incl. blind plugs
- 1/Cable gland M16 (clamping range 3,5-10 mm) incl. blind plugs
- 2/Universal terminal blocks 2,5 mm<sup>2</sup>
- 2/Universal terminal blocks 2,5 mm<sup>2</sup> blue
- 2/Universal grounding terminal 2,5 mm<sup>2</sup>
- 1/Universal grounding terminal 16 mm<sup>2</sup>
- 1/RCBO 2pol. 16/0,1A \*C\*
- 1/Off switch 0-1 with retraction (with engraving light)
- 1/Contactor
- 1/Time relay 3h

| EDP No. | Product ID No.                |
|---------|-------------------------------|
| 840623  | ÖBB.3020.SCHALTGERÜST.2017.01 |





## Signal distributor Subway



### Signal distributor single

#### Signal distributor NOT – Left with provided LED light

Housing with front panel (plastic PA6) incl. 1/Twist lock

#### Dimensions

approx. 260x190x148 mm

#### Equipment

- 1/Cable gland M25 with hose screw PG21 \*at the bottom\*
- 10/Universal terminal blocks 4 mm<sup>2</sup>
- 1/Traffic light reflector
- 1/Holder for reflector
- 1/Lamp mounting plate
- 1/Lamp lens clear
- 1/Sealing ring
- 1/Transformer mounting

#### Signal distributor NOT – Right with provided LED light

Housing with front panel (plastic PA6) incl. 1/Twist lock

#### Dimensions

approx. 260x190x148 mm

#### Equipment

- 1/Cable gland M25 mit Schlauchverschraubung PG21 \*at the bottom\*
- 10/Universal terminal blocks 4 mm<sup>2</sup>
- 1/Traffic light reflector
- 1/Holder for reflector
- 1/Lamp mounting plate
- 1/Lamp lens clear
- 1/Sealing ring
- 1/Transformer mounting

| EDP No. | Product ID No.                    |
|---------|-----------------------------------|
| 89487   | SIGNALVERTEILER.01.NOT.LED.LINKS  |
| 86028   | SIGNALVERTEILER.01.NOT.LED.RECHTS |



### Signal distributor double

#### Signal distributor FES – Left with provided LED light

Housing with front panel (plastic PA6) incl. 2/Twist lock

#### Dimensions

approx. 470x190x148 mm

#### Equipment

- 1/Cable glands M25 with hose screw PG21 \*at the bottom\*
- 7/Universal terminal blocks 4 mm<sup>2</sup>
- 2/Traffic light reflector
- 2/Holder for reflector
- 2/Lamp mounting plate
- 2/Lamp lens clear
- 2/Sealing ring
- 1/Transformer mounting

#### Signal distributor FES – Right with provided LED light

Housing with front panel (plastic PA6) incl. 2/Twist lock

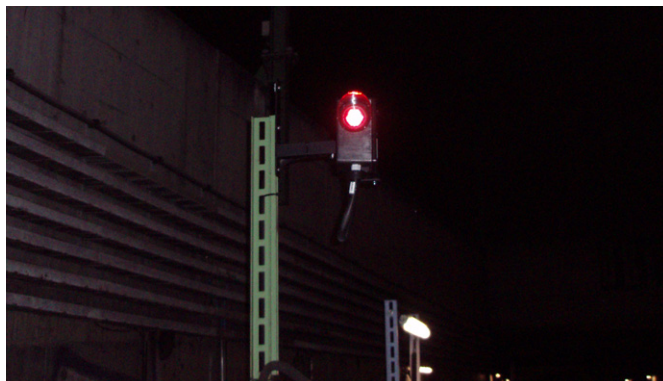
#### Dimensions

approx. 470x190x148 mm

#### Equipment

- 1/Cable gland M25 mit Schlauchverschraubung PG21 \*at the bottom\*
- 7/Universal terminal blocks 4 mm<sup>2</sup>
- 2/Traffic light reflector
- 2/Holder for reflector
- 2/Lamp mounting plate
- 2/Lamp lens clear
- 2/Sealing ring
- 1/Transformer mounting

| EDP No. | Product ID No.                    |
|---------|-----------------------------------|
| 89488   | SIGNALVERTEILER.01.FES.LED.LINKS  |
| 86143   | SIGNALVERTEILER.01.FES.LED.RECHTS |



## Mast connection distributor



EDP No. 115545



EDP No. 115546

- Body made of vulcanized, break and impact resistant butyl rubber
- Vibration-absorbing solid rubber material
- No condensation of condensation with stable temperature fluctuations
- Insensitive to sweat and sparks
- Corrosion-resistant
- UV, - ozone and weathering resistance
- Free of halogen and silicone
- Self-extinguishing  
(needle flame test according to DIN EN 60695-11-5; 2005-11)
- Glow wire test, IEC 60695-2-1 mit 960°C (certificate)
- TSI fire class rating „B“ EN 13501-1
- High voltage dielectric strength according to standard IEC 60243
- ÖVE tested

Including cross-connectors and end plates.  
2/control wires for connection to the respective L-terminals

Mounted on aluminum mounting plate (600x200x4 mm), incl. 2/C-rails and 2/mounting holes.

With 2/plastic spacer strips (H: 15 mm, W: 20 mm) between solid rubber enclosure and aluminum mounting plate

### Mast connection distributor – 2 cable, 2 Light outlets

#### Dimensions

300x200x110 mm (HxWxD)

#### Equipment

- 2/Cable glands M32 (clamping range 14-25 mm) \*at the bottom\*
- 2/Cable glands M20 (clamping range 7-14 mm) \*at the bottom\*
- 6/Universal tension spring clamps 16 mm<sup>2</sup>
- 2/Universal tension spring clamps 16 mm<sup>2</sup> blue
- 2/Universal tension spring clamps 4 mm<sup>2</sup>
- 2/Fuse Terminals 14N with 6A Neozed Fuse

| EDP No. | Product ID No.                            |
|---------|---|
| 115545  | ÖBB.3020.MASTVERTEILER.58.WM.SW.ALU.UNTEN |

### Mast connection distributor – 3 cable, 3 Light outlets

#### Dimensions

300x200x110 mm (HxWxD)

#### Equipment

- 3/Cable glands M32 \*at the bottom\*
- 2/Cable glands M20 \*at the bottom\*
- 6/Universal tension spring clamps 16 mm<sup>2</sup>
- 3/Universal tension spring clamps 16 mm<sup>2</sup> blau
- 2/Universal tension spring clamps 4 mm<sup>2</sup>
- 2/Fuse Terminals USN14N with 6A Neozed Fuse

| EDP No. | Product ID No.                            |
|---------|---|
| 115546  | ÖBB.3020.MASTVERTEILER.60.WM.SW.ALU.UNTEN |

## Solid rubber distributor with stainless steel stand



### Solid rubber socket combination Series 7800 with rain cover, mounted on stainless steel stand (V2A grade)

- Body made of vulcanized, break and impact resistant butyl rubber
- Vibration-absorbing solid rubber material
- No condensation of condensation with stable temperature fluctuations
- Insensitive to sweat and sparks
- Corrosion-resistant
- UV, - ozone and weathering resistance
- Free of halogen and silicone
- Self-extinguishing  
(needle flame test according to DIN EN 60695-11-5; 2005-11)
- Glow wire test, IEC 60695-2-1 mit 960°C (certificate)
- TSI fire class rating „B“ EN 13501-1
- High voltage dielectric strength according to standard IEC 60243
- ÖVE tested

### Distribution box dimensions

500x360x133 mm (HxBxD)

### Stand dimensions

H 1000 mm (to bottom of distributor)

### Equipment

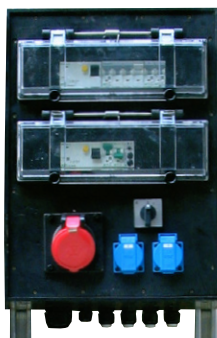
- 3/Universal terminal blocks 16 mm<sup>2</sup>
- 1/Universal terminal block 16 mm<sup>2</sup> blue
- 1/Universal grounding terminal 16mm<sup>2</sup>
- 1/Universal grounding terminal 50mm<sup>2</sup>
- 1/RCD 4pol. 63/0,1A Typ XF \*selective\*
- 1/RCD 4pol. 63/0,03A Typ XF
- 2/MCB 3pol. 32A
- 2/MCB 3pol. 16A
- 2/MCB 1pol. 16A
- 2/ Solid rubber CEE-sockets 5x32A 400V
- 2/ Solid rubber CEE-sockets 5x16A 400V
- 2/ Schuko sockets, 16A 230V with flap lid and enhanced sealing

| EDP No. | Product ID No.                         |
|---------|--|
| 81451   | ÖBB.7833119277.63.HF.UK.STÄNDER.VA.F&G |

Distributor completely mechanically constructed and ready for connection



## Solid rubber distributor



- Body made of vulcanized, break and impact resistant butyl rubber
- Vibration-absorbing solid rubber material
- No condensation of condensation with stable temperature fluctuations
- Insensitive to sweat and sparks
- Corrosion-resistant
- High UV, ozone and weather resistance
- Silicon free
- Absolutely halogen-free
- Self-extinguishing (needle flame test, DIN EN 60695-11-5; 2005-11)
- Glow wire test, IEC 60695-2-1 with 960°C (certificate)
- TSI fire class rating „B“ EN 13501-1
- High voltage dielectric strength according to standard IEC 60243
- ÖVE tested

### Socket outlet distributor for Tunnels > 500m

#### Solid rubber sockets outlet distributor with mounting frame 1650 mm

##### Dimensions

500 x 360 x 133 mm (H x W x D)

##### Equipment

- 1/Cable gland M32 - (clamping range 14-25 mm)
- 4/Cable glands M20 - (clamping range 7-14 mm)
- 1/Cable gland M16 - (clamping range 3,5-10 mm)
- 4/Terminal blocks 16 mm<sup>2</sup> (L, N)
- 1/Universal ground terminal block 16 mm<sup>2</sup>
- 1/Solid rubber CEE-socket 5x16A 400V
- 2/Schuko sockets 16A 230V with flap lid and enhanced sealing
- 3/Universal tension spring clamps 2,5 mm<sup>2</sup> Quattro (L, N, PE)
- 1/Timer relay 3h
- 1/Push-button
- 3/Universal tension spring clamps 2,5 mm<sup>2</sup> (L, N, PE)
- 2/End brackets
- 1/RCD 4pol. 63/0,3A \*selective\*
- 1/RCD 4pol. 40/0,03A Type G/A
- 1/MCB 3pol. + N 16A
- 2/MCB 1pol. + N 16A
- 2/MCB 1pol. + N 6A

| EDP No. | Product ID No.                          |
|---------|---|
| 74211   | ÖBB.781927.0.03.XF.G.UT16.ALU.V.2004.01 |

Distributor completely mechanically constructed and ready for connection

### Socket outlet distributor for Tunnels > 500m

#### Solid rubber sockets outlet distributor with mounting frame 1650 mm

##### Dimensions

500x360x133 mm (HxWxD)

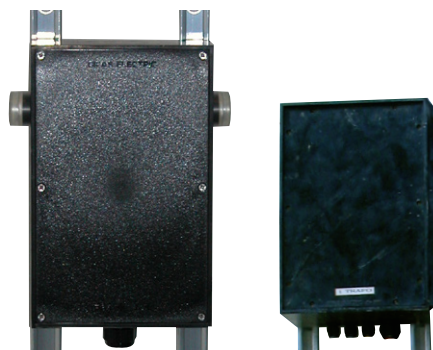
##### Equipment

- 1/ Cable gland M32 - (clamping range 14-25 mm)
- 5/ Cable glands M20 - (clamping range 7-14 mm)
- 1/ Cable gland M16 - (clamping range 3,5-10 mm)
- 4/ Terminal blocks 16 mm<sup>2</sup> (L, N)
- 1/ Universal ground terminal block 16 mm<sup>2</sup>
- 1/ Solid rubber CEE-socket 5x32A 400V
- 1/ Solid rubber CEE-socket 5x16A 400V
- 2/ Schuko sockets 16A 230V with flap lid and enhanced sealing
- 3/ Universal tension spring clamps 2,5 mm<sup>2</sup> Quattro (L, N, PE)
- 3/ Universal tension spring clamps 2,5 mm<sup>2</sup> (L, N, PE)
- 1/ Timer relay 3h
- 1/ Push-button
- 3/ Universal tension spring clamps 4 mm<sup>2</sup> (L, N, PE)
- 3/ End brackets
- 1/ RCD 4pol. 63/0,3A \*selective\*
- 1/ RCD 4pol. 40/0,03A Type G/A
- 1/ MCB 3pol. + N 32A
- 1/ MCB 3pol. + N 16A
- 1/ MCB 1pol. + N 20A
- 2/ MCB 1pol. + N 16A
- 2/ MCB 1pol. + N 6A

| EDP No. | Product ID No.                           |
|---------|--|
| 71538   | ÖBB.7831927.0.03.XF.G.UT16.ALU.V.2003.05 |

Distributor completely mechanically constructed and ready for connection

## Lighting distributor



- Body made of vulcanized, break and impact resistant butyl rubber
- Vibration-absorbing solid rubber material
- No condensation of condensation with stable temperature fluctuations
- Insensitive to sweat and sparks
- Corrosion-resistant
- High UV, ozone and weather resistance
- Silicon free
- Absolutely halogen-free
- Self-extinguishing (needle flame test, DIN EN 60695-11-5; 2005-11)
- Glow wire test, IEC 60695-2-1 with 960°C (certificate)
- TSI fire class rating „B“ EN 13501-1
- High voltage dielectric strength according to standard IEC 60243
- ÖVE tested

### Lighting distribution unit in solid rubber housing with mounting rack "short"

#### Dimensions

250 x 360 x 133 mm (H x W x D)

#### Equipment

- 2/Illuminated pushbuttons (1 Pc. left and right) LED
- 1/Cable gland M20 (clamping range 7-14 mm)
- 6/Universal tension spring clamps 2,5 mm<sup>2</sup>
- 1/End cover
- 2/End brackets

| EDP No. | Product ID No.                          |
|---------|---|
| 79488   | ÖBB.2516.2TA.6ST2,5.1M20.ALU.2006.RV.01 |
| 79487   | ÖBB.2516.2TA.6ST2,5.1M20.ALU.2006.RV.02 |

### Lighting distribution unit in solid rubber housing with mounting rack "long"

#### Dimensions

250 x 360 x 133 mm (H x B x T)

#### Equipment

- 1/Cable gland M25 (clamping range 9-18 mm)
- 3/Cable gland M16 (clamping range 7-14 mm)
- 3/Universal tension spring clamps 2,5 mm<sup>2</sup> Quattro (L1, L2, L3)
- 1/Universal tension spring clamp 2,5 mm<sup>2</sup> Quattro (N)
- 1/Universal tension spring clamp 2,5 mm<sup>2</sup> Quattro
- 6/Universal tension spring clamps 2,5 mm<sup>2</sup>
- 2/End brackets
- Flat-rate installation of 3 customer-supplied electronic transformers

| EDP No. | Product ID No.                       |
|---------|--------------------------------------|
| 71540   | ÖBB.3800.3TRAFO.ALU.LICHT.TP.2003.02 |
| 71539   | ÖBB.3800.3TRAFO.ALU.LICHT.TP.2003.01 |

Distributor completely mechanically constructed and ready for connection

## Door signal



### Solid rubber housing Series 1212 for tunnel gate display ÖVE tested

- Body made of vulcanized, break and impact resistant butyl rubber
- Vibration-damping solid rubber material with integrated solid rubber mounting blocks
- No condensation of condensation with stable temperature fluctuations
- Insensitive to sweat and sparks
- Corrosion-resistant
- High UV, ozone and weather resistance
- Silicon free
- Absolutely halogen-free
- TSI fire class rating „B“ EN 13501-1
- Dielectric strength 7kV/mm

#### Dimensions

125 x 125 x 76 mm (H x W x D)

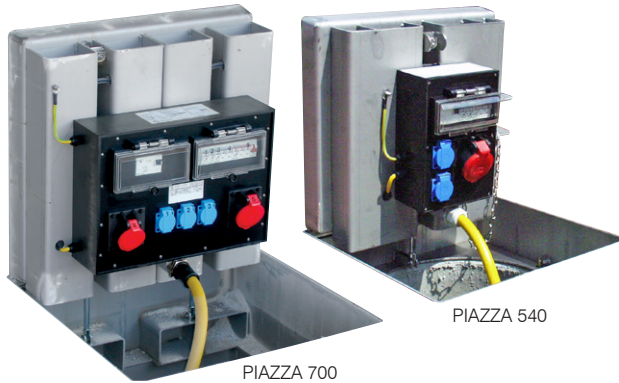
#### Equipment

- 1/Cable gland M25 (clamping range 9-18 mm) incl. blind plugs
- 1/Cable gland M20 (clamping range 7-14 mm) incl. blind plugs
- 5/Universal terminal blocks 2,5 mm<sup>2</sup> Quattro
- 1/LED indicator light 24VDC green
- 1/LED indicator light 24VDC red

| EDP No. | Product ID No.                               |
|---------|--|
| 120616  | ÖBB.1212.2LM.RT.GN.5ST2,5.GRAVUR.2KV.2BST.01 |



## Underground distributors - PIAZZA



PIAZZA 700

PIAZZA 540

- The shaft cover is locked using two sunk, lid-level, rust-proof M10 socket screws (closing tool is included in the scope of delivery)
- Fillable cable outlet insert installed in the manhole cover frame.
- The cover tray can be filled individually.
- There is a self-regulating heating tape installed within the shaft cover in order to ensure smooth opening even in freezing temperatures.

The manhole cover construction is not resistant to surface water ingress; therefore, adequate drainage of the shaft must be provided on site.

Excavation work, proper and standard-compliant installation of the structure, as well as filling of the tray, must also be carried out on site. Electrical connections must be performed by a licensed electrical contractor.

The stainless steel structure with fillable manhole cover is delivered pre-assembled on a concrete shaft, including main and terminal distribution boxes, ready for connection.

### PIAZZA 700

#### Dimensions

310x700x700 mm (HxWxD)

The load capacity is D 400 kN, the cable outlet measures 130x100 mm and the cover tray has a depth of 70 mm.

**Documentation available upon request!**

### PIAZZA 540

#### Dimensions

146x540x540 mm (HxWxD)

The load capacity is D 400 kN, the cable outlet measures 60x40 mm and the cover tray has a depth of 50 mm.

**Documentation available upon request!**



## Underground distributors - PICCOLINO



- Robust, and easy and safe to operate
- For electrical connections
- Cover and frame made of stainless steel
- The cover surface is made of non-slip checker plate or cross-ground sheet metal (slip resistance class R13) and can be filled upon request.
- The lid is locked using a sunk, lid-level stainless steel casement fastener square, 8 mm (2 keys are included in the scope of delivery)
- Load class C (250kN)
- A cable outlet opening for cables up to 20 mm in diameter is provided in the shaft lid
- Accessible and trafficable even during operation.
- Configuration according to customer requirements, with Schuko socket (IP68) or CEE socket (IP67)
- High level of safety in operation due to the reclosing after startup. This means optimum safety for pedestrians, as well as moving and stationary traffic and protection against unauthorized access

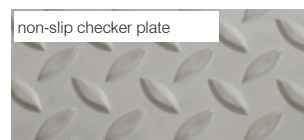
### PICCOLINO 200

#### Dimensions

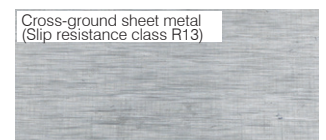
400 x 180 x 200 mm (H x W x D)

The load capacity is class C 250 kN, the cable outlet is suitable for cables up to 25 mm in diameter, and the recessed stainless steel locking mechanism features an 8 mm square cam latch with two keys.

**Documentation available upon request!**



non-slip checker plate



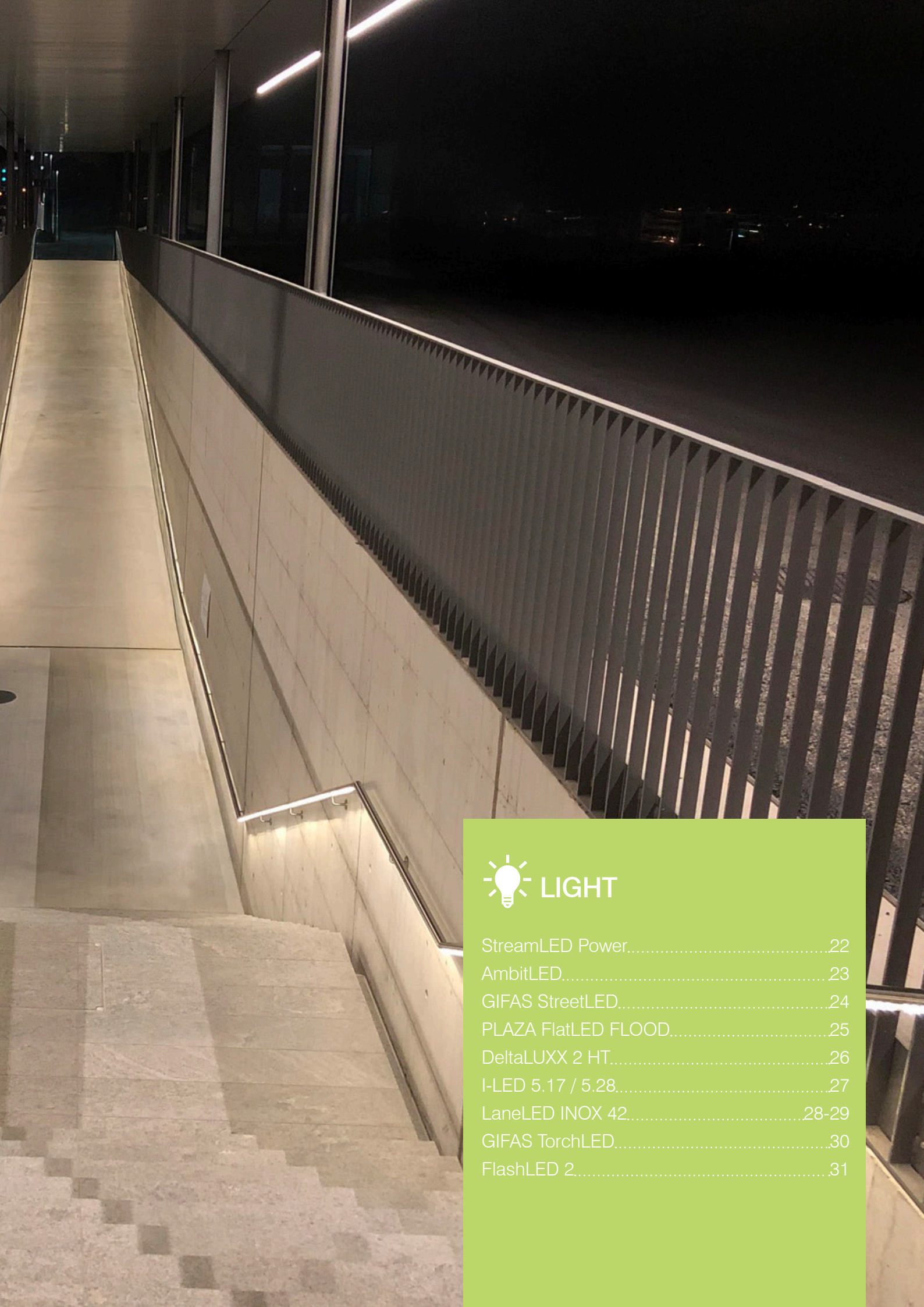
Cross-ground sheet metal  
(Slip resistance class R13)











## LIGHT

|                          |       |
|--------------------------|-------|
| StreamLED Power.....     | 22    |
| AmbitLED.....            | 23    |
| GIFAS StreetLED.....     | 24    |
| PLAZA FlatLED FLOOD..... | 25    |
| DeltaLUX 2 HT.....       | 26    |
| I-LED 5.17 / 5.28.....   | 27    |
| LaneLED INOX 42.....     | 28-29 |
| GIFAS TorchLED.....      | 30    |
| FlashLED 2.....          | 31    |



## StreamLED Power



- Through wiring for light chain
- Connection by cable gland M20 (for cable Ø 7-14 mm)
- Indoor and outdoor applications
- Low energy with good light efficiency
- Full luminous flux is immediately available
- Minimum temperature development
- Constant brightness independent of outdoor temperature
- Extremely consistent in switching (> 1 million)
- Maintenance-free
- Shock and vibration resistant
- Indestructible (meets industrial health and safety standards)
- No UV / IR radiation

### Technical data

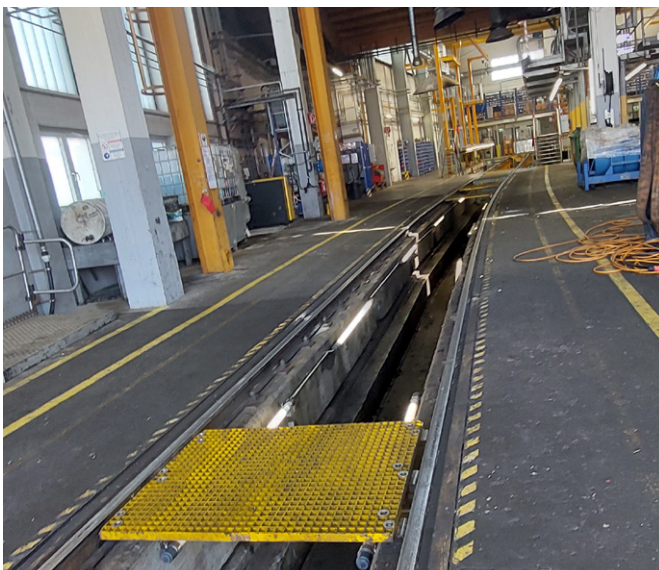
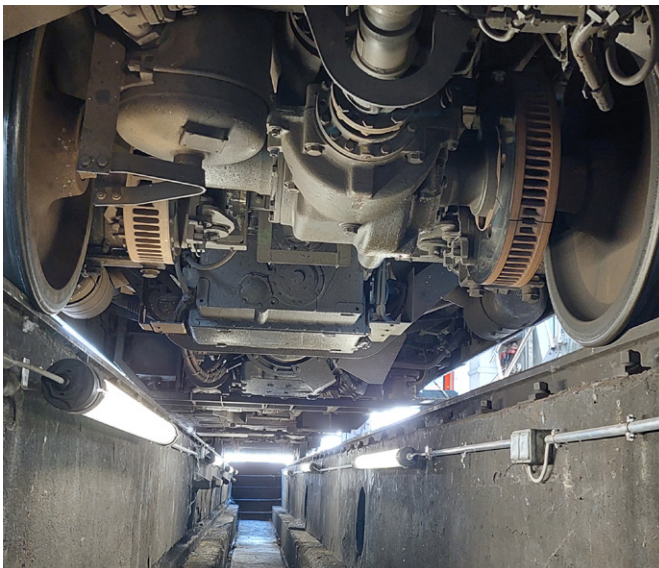
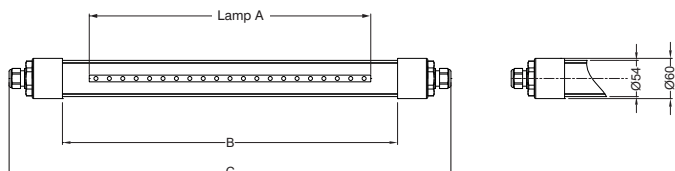
|   |                                    |
|---|------------------------------------|
| LED Power   | 6W / 13,5W / 12W / 27W / 36W / 51W |
| Operating Voltage   | 230VAC, 9 - 36VDC                  |
| LED Efficiency  | up to 155lm/W                      |
| CRI-Index   | Ra>80                              |
| L80/B50   | >60.000h                           |
| Light color   | 3.000K / 4.000K / 6.500K           |
| Beam Angle  | 120°                               |
| Type of protection  | IP68 / IP69K                       |
| Protection rating against mechanical damage for acrylic tube* | IK10                               |
| Protection class  | I, III                             |
| Temperature range for operation                               | -30°C to +50°C                     |
| Tube  | shockproof acryl ø 54 mm           |

### Documentation available upon request!

Also available in SK2

### Design example (mm)

| LED Power | Luminous flux | A     | B     | C     |
|-----------|---------------|-------|-------|-------|
| 6W        | 934lm         | 437   | 500   | 600   |
| 12W       | 1.871lm       | 875   | 920   | 1.080 |
| 13,5W     | 1.959lm       | 437   | 500   | 660   |
| 27W       | 3.723lm       | 875   | 920   | 1.080 |
| 36W       | 5.520lm       | 1.200 | 1.290 | 1.450 |
| 51W       | 7.087lm       | 1.625 | 1.730 | 1.895 |





## AmbitLED



- Compact LED light strip
- Anodized surface
- Fixing bracket in stainless steel, variable mounting bracket
- LED strip in moisture- and dust-tight sealing compound
- Delivery for through wiring with protective cap
- Loop-connection for light chain (max.7A)

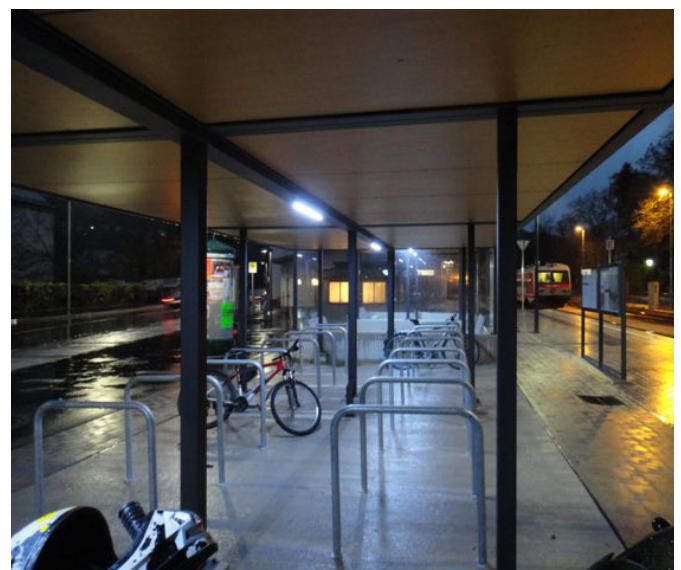
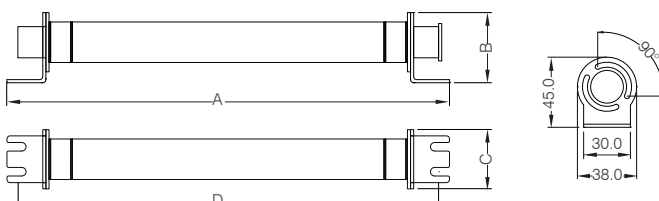
| Technical data                           | AmbitLED<br>(22 - 32VDC)  | AmbitLED Power            |
|--|---|---------------------------|
| Operating Voltage                        | 24VDC <sup>1</sup> (22-32V),<br>polarity safe                                   | 24VDC <sup>1</sup> +/- 4% |
| Light source                             | LED strips  |                           |
| Power consumption                        | 1,5W, 4W or 8W<br>(at 24VDC)  | 2,6W / 6,8W / 13,6W       |
| Connection                               | 2 pin, robust metal M16 industrial<br>connectors                                |                           |
| Connection Diameter                      | max. 0,75 mm  |                           |
| Clamping range                           | 4-8 mm  |                           |
| Color temperature                        | cool white 6.500K   |                           |
| Temperature range for operation          | -25°C to +50°C  |                           |
| Housing material                         | aluminum continuous casting   |                           |
| Type of protection /<br>Protection class | IP67 / III  |                           |
| Plug                                     | 2 pin connector with screw locking  |                           |
| Cable                                    | 2x0.75 mm², halogen-free, UV- and<br>weather resistant, cold resistant to -40°C |                           |

TECHNICAL NOTE: In order to guarantee reliable and safe operation of the LED modules, it is absolutely necessary to use a power adapter that is electronically stabilized. This is the only way to protect LED modules from overcharging, overheating and short-circuiting.

Documentation available upon request!

### Design example (mm)

| LED Power | Luminous flux | A     | B  | C  | D     |
|-----------|---------------|-------|----|----|-------|
| 2,6W      | 220lm         | 284   | 45 | 38 | 270   |
| 6,8W      | 619lm         | 594   | 45 | 38 | 580   |
| 13,6W     | 1.248lm       | 1.094 | 45 | 38 | 1.080 |





## GSL - GIFAS StreetLED



GIFAS StreetLED - with asymmetrical light characteristics. The slim-line luminaire has a die-cast aluminum housing which is powder-coated with a durable epoxy paint. It has ozone and UV-resistant seals and stainless steel screws.

- Type of protection IP66 / degree of protection IK10 (impact-resistant)
- Full luminous flux is available immediately
- Lower power consumption with good luminous efficiency
- Minimal temperature development
- Operates within a broad temperature range: -40°C to +50°C
- No UV/IR-radiation
- Not sensitive to vibrations
- Easy opening of the housing without tools
- Disconnecting the connectors when opening ensures safe working during the installation and maintenance process.
- Universal bracket for pole or wall installation, tilt adjustment in 5° increments from -15° to +15°

### Technical data

|  | GSL 140x50°   | GSL 130x75° |
|--|---|-------------|
| LED Power                                      | 40W / 75W / 120W / 150W / 165W                      |             |
| System performance                             | 42W / 82W / 121W / 159W / 174W                      |             |
| Operating Voltage                              | 230VAC  |             |
| Form of delivery                               | 5.836lm / 11.583lm / 16.850lm / 23.204lm / 27.440lm |             |
| Light source                                   | SMD-LEDs  |             |
| System Efficiency                              | 139lm/W / 141lm/W / 139lm/W 146lm/W / 158lm/W       |             |
| CRI-Index                                      | Ra > 70   |             |
| Luminous angle                                 | 140x50°   | 130x75°     |
| L90/B10  | > 100.000h  |             |
| Light colour                                   | 3.000K / 4.000K                                     |             |
| Temperature range for operation                | -40°C to +50°C                                      |             |
| Dimmable                                       | yes (1-10V)   |             |
| Housing material                               | aluminium - epoxy coated                            |             |
| Housing color                                  | grey  |             |
| Cover  | PMMA  |             |
| Type of protection / Protection class          | IP66 / II   |             |
| Degree of protection against mechanical damage | IK10  |             |
| Weight   | 7,2 kg  |             |
| Dimensions (L x W x H)                         | 556 x 324 x 70 mm                                   |             |
| Swivel range of universal mount                | -15° to +15°  |             |
| Pole attachment for Ø                          | 60 mm   |             |

## Zhaga-socket für GIFAS Street LED (GSL) Optional



The Zhaga socket for the GIFAS Street LED (GSL) street luminaire is an optional component that can be integrated into the GSL luminaire. This standardized socket enables easy installation and interchangeability of various additional modules and attachments.

There is a variety of customizable attachments available for the Zhaga



socket, including motion sensors, light sensors, and other sensors. The flexibility of the system allows for seamless integration of third-party components into the GSL luminaire. This enables users to equip the GSL luminaire with additional features and sensors as needed to meet the specific requirements of their project.

### Example



Documentation available upon request!



## PLAZA FlatLED FLOOD



Flat surface floodlight with symmetrical light characteristic. Plaza FlatLED FLOOD has a slim design, is powder-coated color black, with 5 m supply line H07RN-F and IP44 safety plug.

- Full luminous flux is available immediately
- Lower power consumption with good luminous efficiency
- Minimal temperature development
- Extremely resistant to switching (> 1 million)
- Maintenance-free
- Operates within a broad temperature range -20°C to +50°C
- No UV/IR-radiation
- Not sensitive to impact and vibrations

### Use: Indoor and Outdoor

Billboards, driveways, facades and object lighting, civil protection, schools, public building ...

Appropriate for all locations where a broad area of illumination is required.



| Technical data                                 | PLAZA 150W   | PLAZA 72W         |
|--|--|-------------------|
| LED Power                                      | 150W   | 72W               |
| Operating Voltage                              | 230VAC / 220VDC  |                   |
| Luminous flux                                  | 21.220lm   | 10.180lm          |
| Light source                                   | SMD-LEDs   |                   |
| System Efficiency                              | 150lm/W  |                   |
| CRI-Index                                      | Ra>80  |                   |
| L80/B50  | >85.000 h  |                   |
| Light colour                                   | 5.700K   |                   |
| Loss of luminous flux                          | <10%   |                   |
| LED resistance to switching                    | >1 Mio.  |                   |
| MacAdam  | 3-step   |                   |
| Temperature range for operation                | -20°C bis +50°C  |                   |
| Max. surface temperature                       | +90°C (suitable for use in industrial premises with fire hazards),<br>D rating label |                   |
| Housing material + reflector                   | die-cast aluminium   |                   |
| Housing color                                  | black  |                   |
| Cover  | 5 mm safety-glass  |                   |
| Type of protection / protection class          | IP66 / I   |                   |
| Type of protection plug                        | IP44   |                   |
| Degree of protection against mechanical damage | IK08   |                   |
| Weight   | 9,0 kg   | 5,5 kg            |
| Dimensions (H x W x D)                         | 450 x 355 x 95 mm  | 372 x 265 x 80 mm |

Documentation available upon request!



## DeltaLUXX 2 HT - high temperature spotlight



- Robust housing made of corrosion-resistant die-cast aluminium
- Dirt-resistant PTFE surface coating, approved for the food industry
- 3mm impact resistant plastic cover (PC)
- Custom-made U-profile seal surrounding all sides
- Custom-made, durable, heat-conducting film for lasting, reliable dissipation of heat from the LED board
- Low heat generation thanks to the latest LED technology
- Full luminous flux is available instantly after switching on
- Low energy consumption with high light output
- Maintenance-free
- Wide operating temperature range (up to 70°C)
- No UV/IR-radiation
- Vibration-resistant

### Technical data

|                                       |                        |
|---------------------------------------|------------------------|
| Operating Voltage                     | 100-277VAC (50/60Hz)   |
| Illuminant                            | SMD-LEDs               |
| System performance                    | 140W / 183W            |
| Luminous flux                         | 21.400lm / 26.800lm    |
| System Efficiency                     | 153lm/W / 147lm/W      |
| Light color                           | 5.000K                 |
| CRI-Index                             | Ra >80                 |
| Beam Beam Angle                       | open distribution 120° |
| L70/B10                               | > 50.000h              |
| Type of protection / protection class | IP65 / I               |
| Shock resistance                      | IK08                   |
| Temperature range for operation       | -30°C to +70°C         |
| Housing material                      | Die-cast aluminium     |
| Housing surface                       | PTFE-coated            |
| Housing color                         | black                  |
| Cover                                 | 3 mm polycarbonate     |
| Connection cables                     | 1 m                    |
| Weight                                | approx. 9,5 kg         |
| Dimensions (Ø x H)                    | 450 x 195 mm           |
| Certification                         | CE                     |



Documentation available upon request!



## I-LED - Industry LED



- Small LED-flood light with symmetric luminous characteristics.
- The I-LED 5 has a slim construction, is powder-coated in black
- Full luminous flux is available immediately
- Lower power consumption with good luminous efficiency
- Minimal temperature development
- Extremely resistant to switching (> 1 million)
- Maintenance-free
- No UV/IR-radiation
- Not sensitive to impact and vibrations

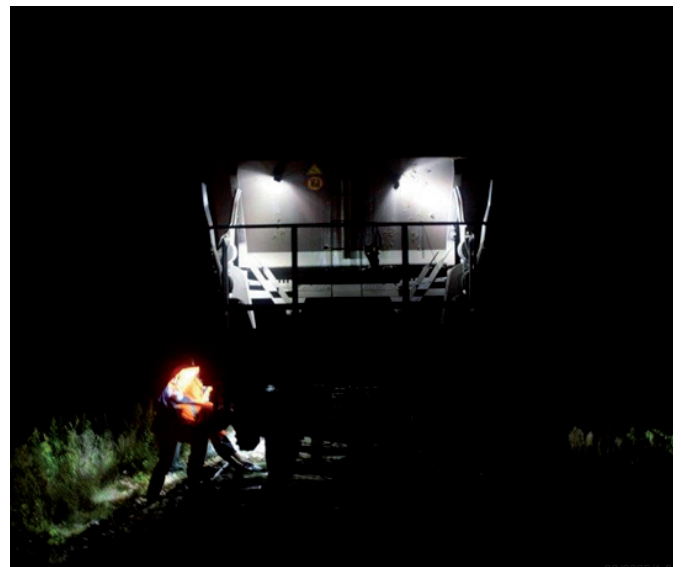
### Range of application

Appropriate for all kinds of usage which need an extensive professional illumination.

- Industry
- Construction machines
- Vehicles
- Mechanical engineering ...

| Technical data                        | I-LED 5.28                         | I-LED 5.17                 |
|---------------------------------------|------------------------------------|----------------------------|
| LED Power                             | 9x3W                               | 12W / 17W                  |
| Electrical power                      | 24VDC 1,0A /<br>230VAC 0,11A       | 24VDC 13W / 19W            |
| Operating Voltage                     | 11-36VDC / 22-26VAC<br>/ 85-265VAC | 12-45VDC /<br>12-30VAC     |
| Luminous flux                         | 3.000lm                            | 1.400lm / 2.000lm          |
| CRI-Index                             | Ra>80                              |                            |
| Luminous angle                        | Flood (60°) / Spot (30°)           |                            |
| Average LED lifetime at 20°C          | >50.000h                           |                            |
| Loss of luminous flux                 | <10%                               |                            |
| LED resistance to switching           | >1mio.                             |                            |
| Color temperature                     | 6.500K / cool white                |                            |
| Temperature range for operation       | -30°C to +50°C                     |                            |
| Housing material                      | aluminium                          |                            |
| Housing color                         | black                              |                            |
| Cover                                 | plastic glas                       |                            |
| Feeding lines                         | 3m / 5 m 3x0,75 mm <sup>2</sup>    | 5 m 3x0,75 mm <sup>2</sup> |
| Type of protection / protection class | IP67 / IP69                        |                            |
| Weight                                | 1,04 kg / 1,34 kg                  | 0,6 kg                     |
| Dimensions (L x W x H)                | 170 x 120 x 95 mm                  | 112 x 86 x 38 mm           |

Documentation available upon request!





## LaneLED INOX 42 - Handrail system



### Hand rails with LED lighting: Increased safety in a sophisticated design

As an established manufacturer of emergency lights for road and rail tunnels using LED technology, we have accumulated a wealth of knowledge and know-how. Based on this experience, we are taking another step towards providing safety everywhere people go with our LED-illuminated hand rails.

#### In general

A hand rail is a rail within easy reach that people can hold on to or allow themselves to be guided by. Most hand rails come in the form of posts, rails or bars. Common materials used are metal, wood, wood composites or plastic. A hand rail can be the upper part of a balustrade or railing. It can also be attached directly to a wall.

#### Requirements

A «fixed» hand rail is required by law. «Rigging», meaning hand rails made with rope, are only intended as decoration since they could give way in case of a fall. They should be continuous and ideally extend past the first and last steps of stairs.

**This innovation is based on different directives, such as DIN 18065, information from the Swiss Competence Centre for Accident Prevention (bfu) and SUVA recommendations.**

#### Applications

- Underpasses and overpasses in railway stations
- Escape route and emergency staircases
- Decorative applications in office or exhibition wings
- Hospitals and nursing homes
- Schools and day care centres
- Shopping and meeting areas
- Hotels and restaurants
- Staircases

#### Our services

All of our calculations and drawings are prepared in close cooperation with planners. This guarantees that the LaneLED INOX42 handrail is implemented according to customer specifications.

#### GIFAS also offers the following services:

- Planning and concept development as per specifications
- Relux lighting calculation
- Consultation and bracket through our field service
- Creation of object-specific plans and documents
- Mutual bracket among the partner companies, contact mediation

In the following pages, you will find an overview of the functioning principles and benefits of the LaneLED INOX42, as well as detailed information about the individual components.

We are always very happy to answer any of your questions.

#### Handrail system

LED-equipped handrails for outdoor and indoor applications, suitable for balcony railings, stair railings, and terrace railings. These handrails can be easily mounted onto standard railing posts using special pipe sections. The pipe supports and adapters allow for internal cable routing with the connection cabling system developed by GIFAS.

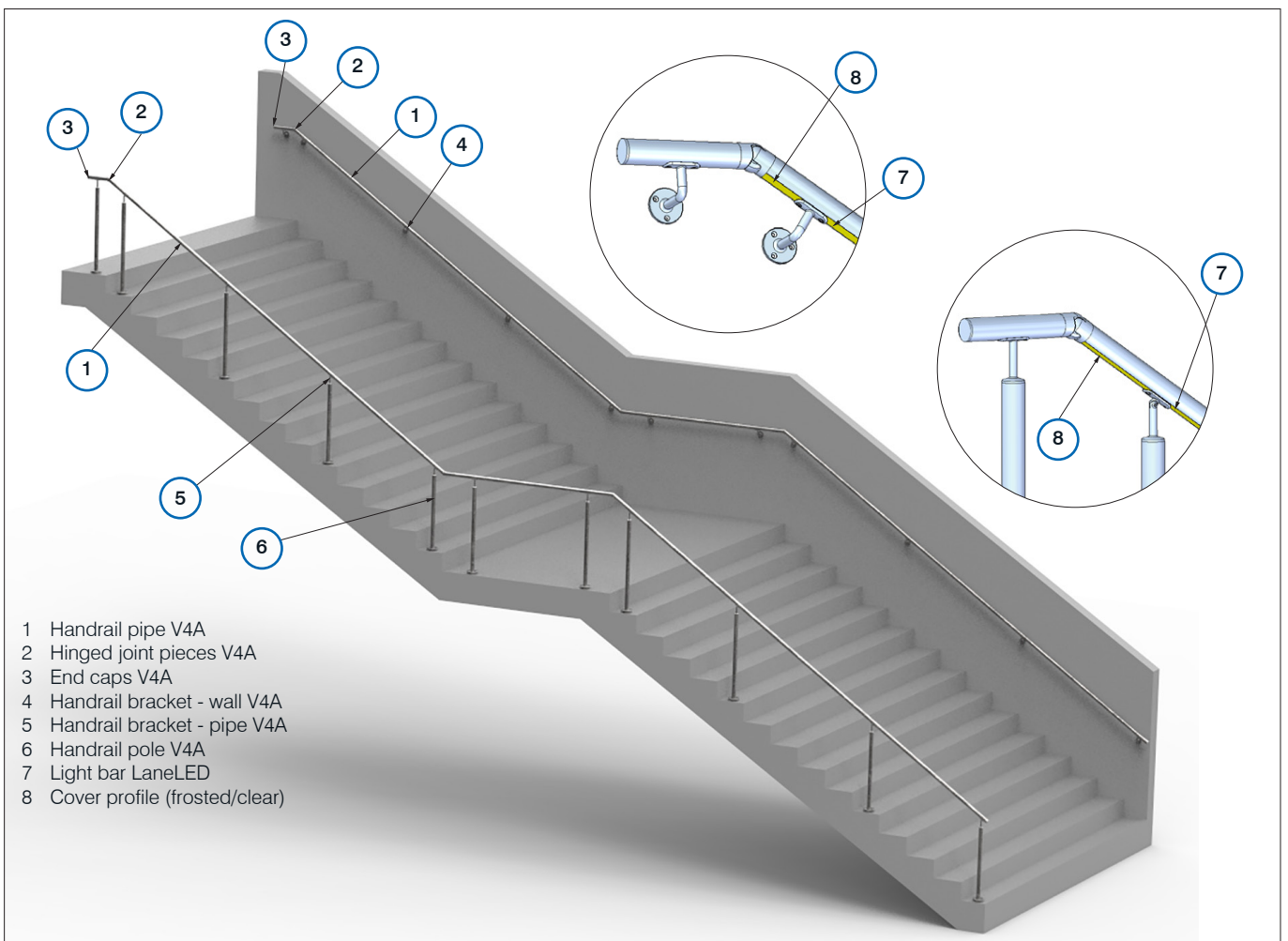
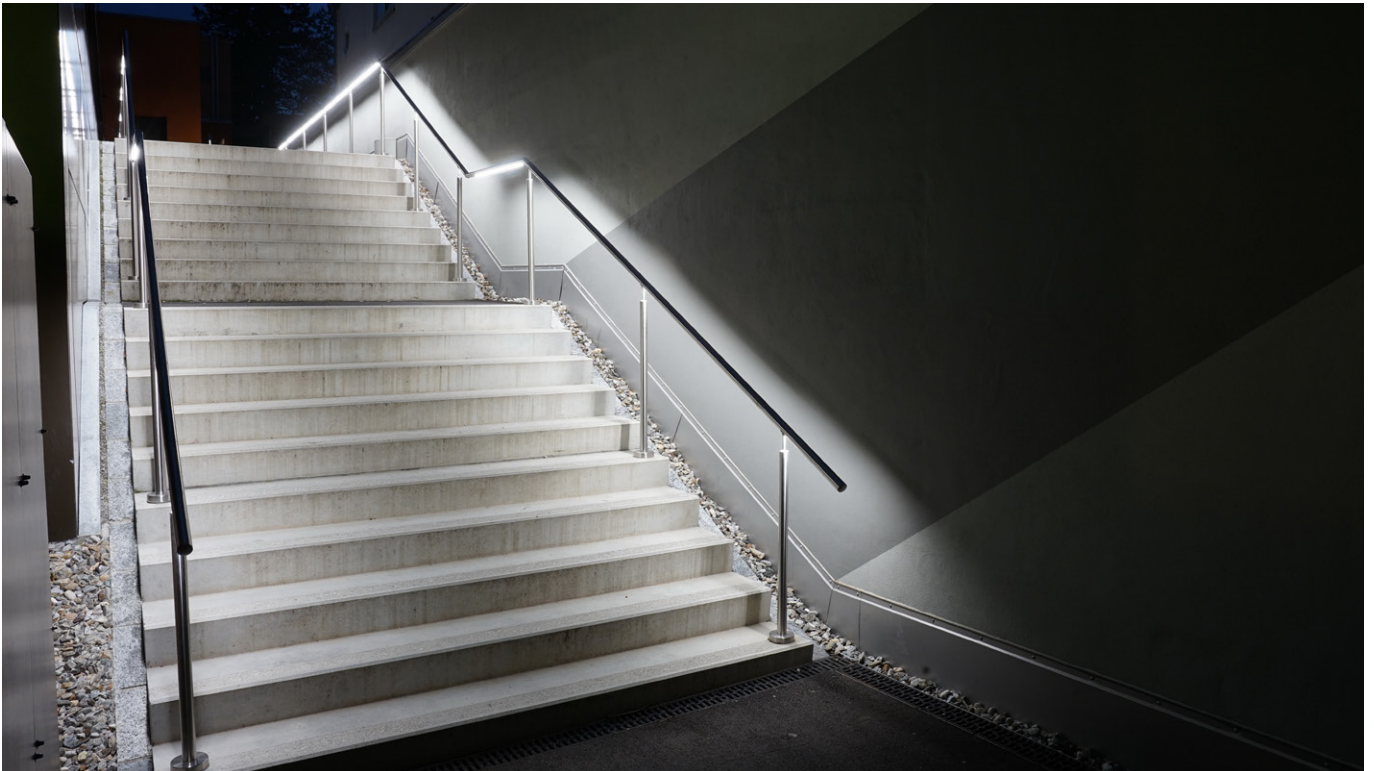
All metal components are made of V4A-grade stainless steel, with protection class IP66 / IP69K.

#### Wall handrail system

LED-equipped handrails for outdoor and indoor use, serving as fall protection and guidance support on stairways, with functional, accent, or pathway lighting. A wide range of modular components allows for customized configurations to suit all types of wall-mounted handrails.

All metal components are made of V4A-grade stainless steel, with protection rating IP66 / IP69K.

Documentation available upon request!



08/2025/1.0



## GIFAS TorchLED (Battery or Accu mode)

### SHUNTING SERVICE LAMP



- Freestanding
- Holder made in plastic - enables a quick and save pocketing in the front part
- Integrated fixings for supporting loops and fixing belts
- Impact resistance

#### Controller

- A ON / OFF white light broad  
ON / OFF white light beam
- B Ein/OFF LED red light

The unmistakable operation by means of color marking allows safe working in the shunting area, easy to handle even with winter gloves.

Easy opening of the housing for battery replacement or battery change, safe closing by snap closure. Unmistakable use of batteries or rechargeable batteries (polarity reversal protection).

#### Technical data light

|                                 |  |
|---------------------------------|--|
| Operating Voltage               | 4 pc. AA 1,2V Accu min. 2700mAh  |
| Burning time                    | approx. 30h  |
| Type of protection              | IP54   |
| Temperature range for operation | -20°C to +45°C   |
| Housing material                | Impact-resistant PA6-Casing, with rubber overmoulded handle (non-slip) |
| Housing colour                  | Signal yellow  |
| Weight                          | approx. 230 g  |
| Dimensions (W x H x D)          | 67,8 x 115,5 x 34 mm   |

#### Technical data charging station

|                        |                                   |
|------------------------|-----------------------------------|
| Power supply           | 700mA charging current            |
| Charging time          | approx. 1900mAh cells max. 4 Std. |
| Pins                   | spring steel, gold plated         |
| Type of protection     | IP40                              |
| Housing material       | ABS                               |
| Dimensions (W x H x D) | 86,6 x 79,6 x 44 mm               |

| EDP No. | Product ID No.                               |
|---------|--|
| 112027  | TORCHLED.HANDLAMPE.4XAKKU.O.LST.SET.V2       |
| 860276  | TORCHLED.LADESTATION.SCHW.230VAC/15VDC       |
| 860471  | TORCHLED-LADESTATION.12-48VDC.1,5M.ZUL.O.ST. |



- a) Broad light  
b) Beam light  
c) Red light  
d) Red light  
e) Charging status  
green flashing = Charging the battery  
green light = Battery charged

### RAILWAY ATTENDANTS LAMP

- Freestanding
- Holder made in plastic - enables a quick and save pocketing in the front part
- Integrated fixings for supporting loops and fixing belts
- Impact resistance

#### Controller

- A ON / OFF LED white light broad  
ON / OFF LED green light broad
- B ON / OFF LED red light

The unmistakable operation by means of color marking allows safe working in the shunting area, easy to handle even with winter gloves.

Easy opening of the housing for battery replacement or battery change, safe closing by snap closure. Unmistakable use of batteries or rechargeable batteries (polarity reversal protection).

Charger 230V with cables and plug-in transformer to GIFAS TorchLED

#### Technical data light

|                                 |  |
|---------------------------------|--|
| Operating Voltage               | 4 pc. AA 1,2V Accu min. 2700mAh  |
| Burning time                    | approx. 20h  |
| Type of protection              | IP54   |
| Temperature range for operation | -20°C to +45°C   |
| Housing material                | Impact-resistant PA6-Casing, with rubber overmoulded handle (non-slip) |
| Housing colour                  | Signal yellow  |
| Weight                          | approx. 230 g  |
| Dimensions (W x H x D)          | 67,8 x 115,5 x 34 mm   |

#### Technical data charging station

|                        |                                      |
|------------------------|--------------------------------------|
| Power supply           | 700mA charging current               |
| Charging time          | approx. 1900mAh Zellen cells. 4 Std. |
| Pins                   | spring steel, gold plated            |
| Type of protection     | IP40                                 |
| Housing material       | ABS                                  |
| Dimensions (W x H x D) | 86,6 x 79,6 x 44 mm                  |

| EDP No. | Product ID No.                               |
|---------|--|
| 120834  | TORCHLED-HANDLAMPE.AKKU.ZSR                  |
| 860276  | TORCHLED.LADESTATION.SCHW.230VAC/15VDC       |
| 860471  | TORCHLED-LADESTATION.12-48VDC.1,5M.ZUL.O.ST. |



- a) Broad light white  
b) Broad light green  
c) Red light  
d) Red light  
e) Charging status  
green flashing = Charging the battery  
green light = Battery charged

08/2025/1.0



## FlashLED 2



The FlashLED 2 is based on the latest Li-ion battery technology coupled with up-to-date LED technology.

If the supply voltage of the charging station fails, the light switches on in "emergency light" mode. This is activated at the factory ("ON"), but can be changed by pressing the "OFF" switch. The emergency light function is activated by setting the magnetic switch to the "Emergency Light ON" position.

The swivelling light head is a further advantage; the degree of protection of IP65 (IP54 for the charging station) and the easily understandable film panel are additional positive properties of the product.



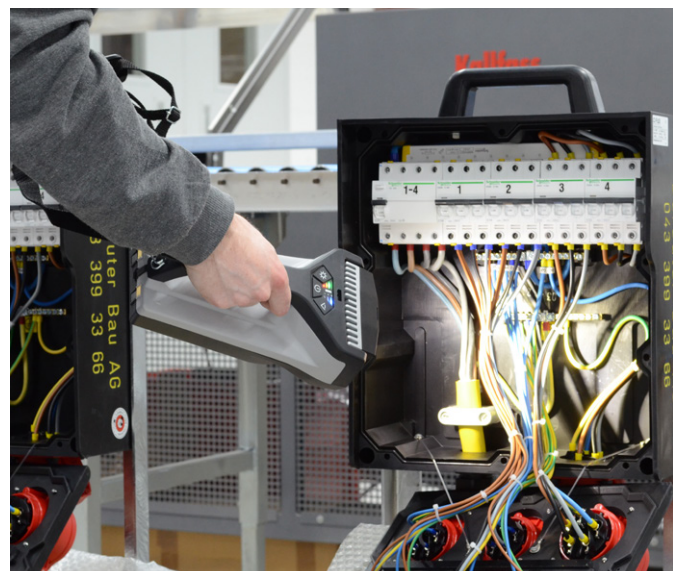
### Technical data light

|                                |                                     |
|--------------------------------|-------------------------------------|
| Operating Voltage              | 10 - 42VDC                          |
| Power supply                   | Li-Ion Accu 14.4V 2.600mAh          |
| Charging time                  | 5h                                  |
| Lighting time:                 |                                     |
| - Spot                         | 10h (3 LED)                         |
| - Wide                         | 14h (2 LED)                         |
| - Full light                   | 5h (5 LED)                          |
| - Emergency light              | 5h (5 LED)                          |
| Illuminant                     | 5 Power-LED à 3W, cool white 5.000K |
| Luminous flux LED              | 200lm - 1.250lm                     |
| Type of protection             | IP65                                |
| Protection class               | III                                 |
| Operating temperature range    | -20° to +45°C                       |
| Charging temperature range     | 0° to +45°C                         |
| Dimensions (L x W x H):        |                                     |
| - Light excl. charging station | 251×124×94 mm                       |
| - Light incl. charging station | 323×149×108 mm                      |
| Weight                         | 1,06 kg                             |

### Technical data Charging station

|                              |                                  |
|------------------------------|----------------------------------|
| Operating Voltage            | 230VAC (85 - 264VAC) or 12-24VDC |
| Type of protection           | IP54                             |
| Protection class 230 VAC     | II                               |
| Protection class 12 - 24 VDC | III                              |
| Dimensions (L x W x H)       | 149 x 276 x 95 mm                |
| Weight                       | 430 g                            |

Documentation available upon request!





Scan the QR code to learn more  
about the GIFAS railway world!

CONTACT US



**GIFAS**  
E L E C T R I C

GIFAS ELECTRIC Gesellschaft m.b.H.  
Strass 2 • 5301 Eugendorf • AUSTRIA

+43 6225/7191-0  
+49 8654/404-2000  
verkauf@gifas.at  
www.gifas.at



05/2025/1.0  
Subject to technical changes