

# MOUNTAIN RAIL and ROPEWAY







**GIFAS**  
ELECTRIC

SYSTEMATIC QUALITY

# Contents





## Snowmaking

Pages 4 - 7

Snowmaking distributor box	Intermediate fuse distributor	Isolation switch / jet fans	Timekeeping box
			
Pages 4 - 5	Page 6	Page 6	Page 7

## Electrical equipment

Pages 8 - 13

Distributor	Underground system	Power bollard	Retractable Bollard
			
Page 8	Page 9	Pages 10 - 11	Pages 12 - 13


## Area lighting

Pages 14 - 20

High Power LED	GSL GIFAS StreetLED	DeltaLUXX	AlphaLUXX	PLAZA FlatLED FLOOD	APOLLO GIFAS DiscLED WayLED
					
Page 14	Page 15	Page 16	Page 17	Page 18	Pages 19 - 22





## Safety lighting

Page 21

Industrie-LED	StreamLED 70	AmbitLED	LaneLED Wall	TrafficLED
				
Pages 23 - 25	Page 26	Page 27	Page 28	Page 29

## Personal protective equipment

Pages 22 - 28

Testing and measurin equipment	Cable reels and Event distribution	Cable bridge	Rechargeable- and Battery lights
			
Page 30	Page 31	Page 31	Pages 32 - 35



Something that remains.

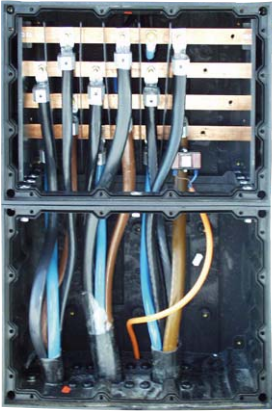
We create security through dynamism

In everything we do, the focus is on longevity and the conservation of resources. We want to produce and sell products that will be available to our customers for a long time and give them time for other activities. We also provide our services for this

In order to achieve this for our customers, we need lean processes and we have to continuously develop them and ourselves. We look for the right solutions for our customers while maintaining economic efficiency. The customer becomes a partner, and we act on an equal footing.

We focus on the main segments construction site, security, traffic, industry, and municipalities. We sell our standard products through retailers to have more time to look after projects and series business.

## Snowmaking distributor box for fan guns and lances



## Solid rubber distributor box for snow cannons Series 2x7800 ÖVE-tested

### Dimensions

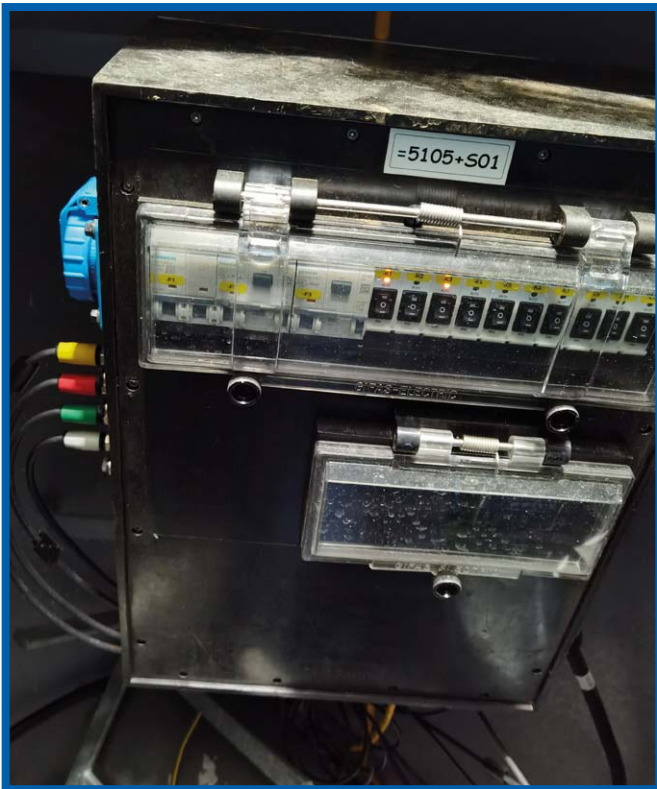
720 x 500 x 236 mm (W x H x D)

### Version

Housing of vulcanized, break- and shock resistant self-extinguishing butyl rubber, resistant to oils, various acids and alkalis. Insensitive to welding and sparks.

### Special Features

- Vibration damped solid rubber material with integrated solid rubber mounting blocks
- No condensation due to severe temperature variations
- Simple adaptation in the assembled state (addition attachment screw)
- Simple foreclosure possibility of e.g. : Operating- and control voltage
- Corrosion resistance due to solid rubber material
- V4A screws (captive)
- Protective insulation of solid rubber distributor is fully guaranteed
- Wall mounting separated from the wiring space
- High UV and ozone resistant
- High resistance to environmental and chemical influences, halogen and silicone free



**Example: Snowmaking distributor box**  
240er loop boxes for snow cannons - Höchkönig lifts

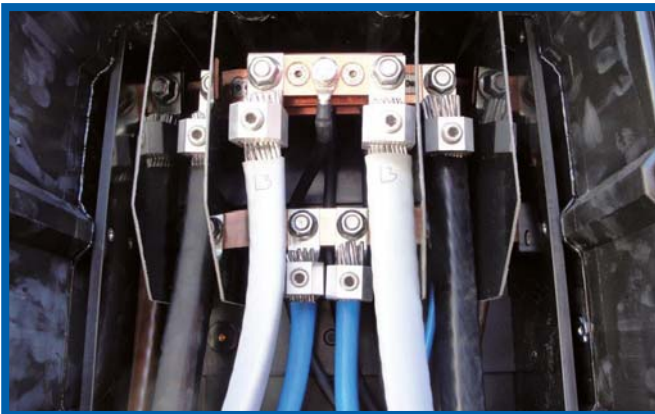


**Customer requirements**

The Höchkönig lifts wanted a distributor box for their snow guns, which corresponds to the specific requirements (water, snow, temperature fluctuations, ...)

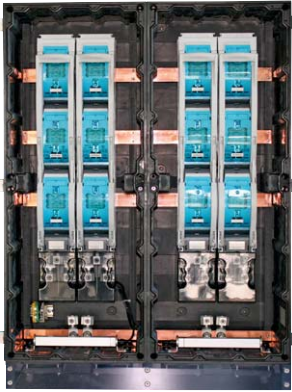
**GIFAS implementation**

The GIFAS solid rubber snowmaking distributor box is compact and made of vulcanized butyl rubber. It already complies with the new regulations (EN61439) and also the recommendations of the professional association of cable cars are met.



## Intermediate fuse distributor

Intermediate fuse box for compliance with the switch-off conditions according to OVE E 8101, DIN VDE 0100 or IEC 60364.



**Solid rubber distributor box for snow cannons**  
Series 4x7900  
ÖVE-tested

### Dimensions

720 x 1000 x 276 mm (W x H x D)

### Version

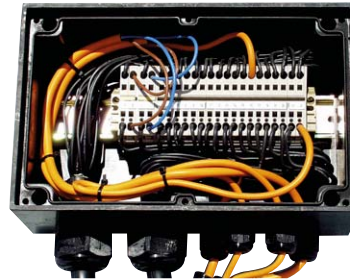
Housing of vulcanized, break- and shock resistant self-extinguishing butyl rubber, resistant to oils, various acids and alkalis.

### Special Features

- Vibration damped solid rubber material with integrated solid rubber mounting blocks
- No condensation due to severe temperature variations
- Simple adaptation in the assembled state (addition attachment screw)
- Simple foreclosure possibility of e.g. : Operating- and control voltage
- Corrosion resistance due to solid rubber material
- V4A screws (captive)
- Protective insulation of solid rubber distributor is fully guaranteed
- Wall mounting separated from the wiring space
- High UV and ozone resistant
- High resistance to environmental and chemical influences, halogen and silicone free
- With transparent lid (visual inspection)

## Support terminal box

for cable position monitoring



The GIFAS support terminal boxes are free of condensation, weather-resistant, UV-resistant and ozone resistant, crushproof, and due to the rubber material it also absorbs vibrations.

- The rubber material used is a poor heat conductor or a good insulator, however, it has a very good heat storage ability, but there is no condensation. There are no ventilation holes necessary, therefore there is no ingress of dirt or insects.
- The distributor is vibration damped by the rubber material, in addition, the terminals are mounted on solid-rubber blocks. This prevents unintended loosening of Screws due to vibration of the props.
- It causes no electrochemical reactions due to different metals, the screws can also be easily and simply unscrewed after years (no "hard biting" of the screws).
- The terminal boxes can be equipped and executed as individually required. On request different mounts for supporting systems.



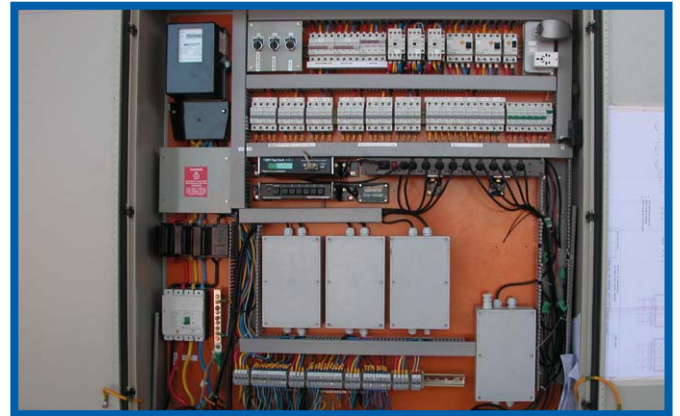
Timekeeping box



Solid rubber -timekeeping-box  
Series 7800  
ÖVE-tested

Dimensions  
360 x 500 x 133 mm (W x H x D)

Version  
Housing made of vulcanised, self-extinguishing butyl rubber, halogenfree, UV-resistant, resistant to oils, various acids and alkalis. Insensitive to welding and sparks. The fixtures are installed behind a splashproof and impact-resistant door, which is lockable by means of a rotary latch.

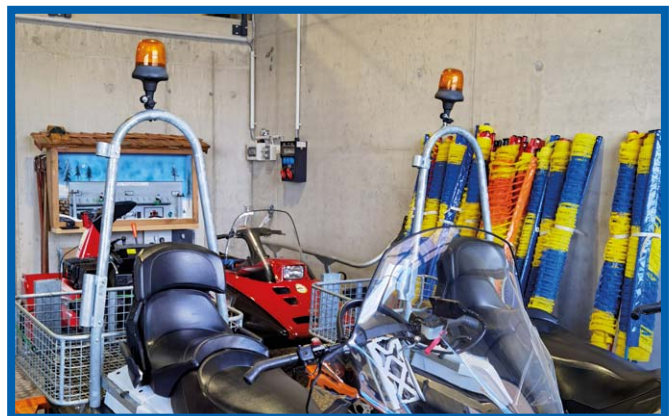


## Systems for parking lots, main squares and pavillions - Wall junction boxes



The GIFAS supports terminal boxes are free of condensation, weathering, UV and ozone resistant, crushproof, and by the rubber material also absorbs vibrations.

- The rubber material used is a poor heat conductor or a good insulator, however, it has a very good heat storage ability, but there is no condensation. There are no ventilation holes necessary, therefore there is no ingress of dirt or insects.
- The distributor is vibration damped by the rubber material, in addition, the terminals are mounted on solid-rubber blocks. This prevents unintended loosening of Screws due to vibration of the props.
- It causes no electrochemical reactions due to different metals, the screws can also be easily and simply unscrewed after years (no "hard biting" of the screws).
- The terminal boxes can be equipped and executed as individually required. On request different mounts for supporting systems.



More model and information can be found in our folder - Chapter 2 or on our homepage- Download.



**Unterflurverteiler**  
für Parkplätze, Hauptplätze und Pavillionanspeisungen



The underfloor energy systems produced by GIFAS can be used wherever energy, electricity, compressed air, and water supplies are to be laid invisibly and inconspicuously under the floor. Our underfloor distributors are installed when the village / town square is renewed - to always guarantee a fast energy supply. However, they are also used in assembly halls, etc. - simply wherever power is distributed on demand and needs to be sunk into the ground without any problems. The underfloor systems can be equipped with electricity, compressed air, water, and sewage systems. According to customer requirements!

- Cover and frame made of stainless steel
- Cover fillable individually and therefore can be ideally adjusted for the respective environment
- For power supply, waste water and fresh water connections
- Load class D 400 kN  
(the model 720M = Load class C 250kN)
- Cable- and tube outlet insert
- Easy and very quick opening and closing are assisted by two gas springs.
- A self-regulating heating band has been laid within the shaft cover in order to ensure that opening is possible even at freezing temperatures.
- Accessible and trafficable even during operation.
- GIFAS solid rubber distributor: equipped individually in line with your individual requirements, technical data and electrical regulations.
- High levels of operational safety due to reclosing after start-up. This means optimum safety for both pedestrians and stationary or moving traffic, as well as protection against unauthorised access.



More model and information can be found in our folder - Chapter 11.1 or on our homepage- Download.

## Power bollard for parking lots, main squares and pavillions



Square columns with their edges are not always in demand. For these specific requirements, we have two versions of round connection columns made of stainless steel, the RONDO model series. A RONDO column is mounted on a floor outlet using a flange plate and connected to the power supply.

There is space in the RONDO column for the distributor housing, in which the electrical distribution is integrated.

- High operating safety and protection against unauthorized access and vandalism
- Individual distributor fittings (Solid rubber distributor ) as per the client's specification, technical requirements and regulations
- Fuse material by shockproof makrolon
- Energy is drawn off in the closed state via the cable exit flap
- Also useful as drive-through protection and path security in connection with a safe and problem-free energy supply



More model and information can be found in our folder - Chapter 11.2 or on our homepage- Download.

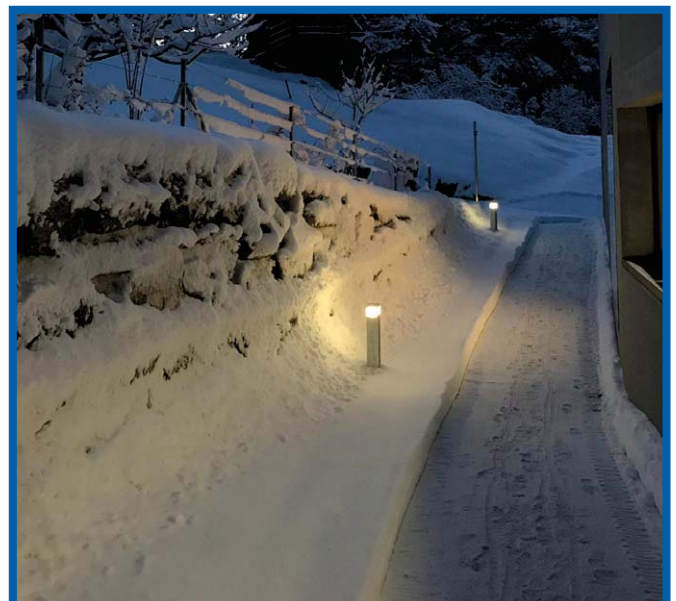
07/2020/1.0

**Energy Columns**  
for parking lots, main squares and pavillions



The energy columns produced by GIFAS stand for a multitude of different solutions that are always application-specific and implemented according to customer requirements. They are visually inconspicuous and vandal-proof connection distributors for indoor and outdoor use. Due to the special design, the energy column can also be used in harsh environments without any problems.

- Suitable for indoor and outdoor areas - Robust and flexible
- Extremely high resistance (freedom from corrosion)
- Compressed air can be connected
- Low-voltage combinations, data processing modules, command and signaling devices can be installed
- Can be combined with compressed air, data or water connections
- Option: terminal block
- Accessories: ES-Luminaire head in cold white or warm white



More model and information can be found in our folder - Chapter 11.2 or on our homepage- Download.

## Retractable Bollard



**Retractable Bollard 2**  
Electromotor-driven

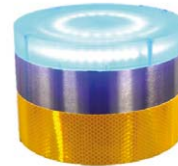


**Fixed bollard**  
Permanently mounted



	<b>Retractable Bollard 2</b> (electric))	<b>Fixed bollard</b> (fixed))
Strain class/ max. load capacity	C250	–
Material/quality	Rust proof stainless steel V2A (tube V4A 1.4301), satin brushed finish	Rust proof stainless steel (1.4301), satin brushed finish
Type of drive	Electromechanical (geared motor on spindle)	–
Speed	approx. 12 cm/sec.	–
Operating Voltage	drive power 24VDC	–
Type of protection	IP67	–
Extension height	600 mm	600 mm
LED strip light	48×SideLED RGB 0.08 W/24×TopLED RGB 0.2 W	–
Radar	Close range to 2m (24 GHz)	–
Integrated heating	✓	–
Quick installation	✓	✓
Spare parts for entire lifespan	✓	✓
GIFAS support with planning	✓	✓
GIFAS service team	✓	✓

### RGB LED light strip with integrated radar



*Circumferential RGB LED light strip and head illuminati*

The bollard head with programmable RGB LED's guarantees best visibility in every situation. Three different colour states can be defined for the positions:

- downs: e.g green
- ups: e.g red
- when moving: e.g flashing orange

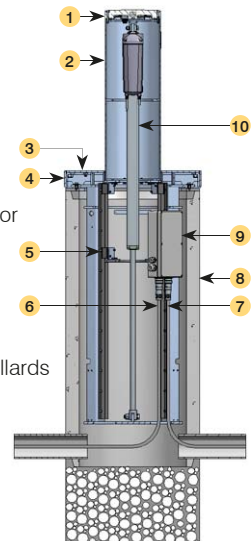
The RGB LED technology allows practically any colour to be chosen. In addition to visual safety, a radar sensor is also installed, which covers the movements in the bollard area and triggers a descent during upward movement until the danger is over.

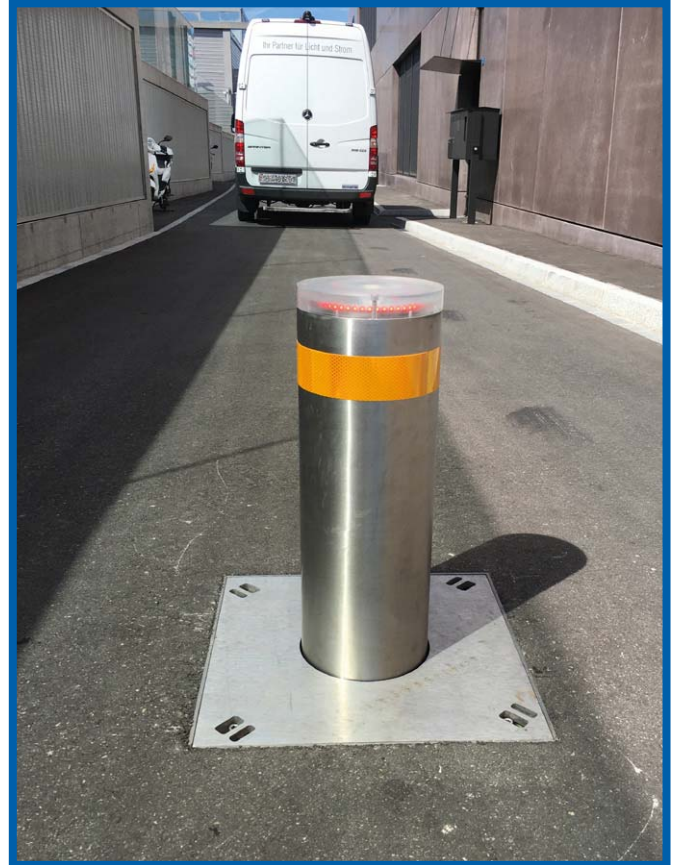
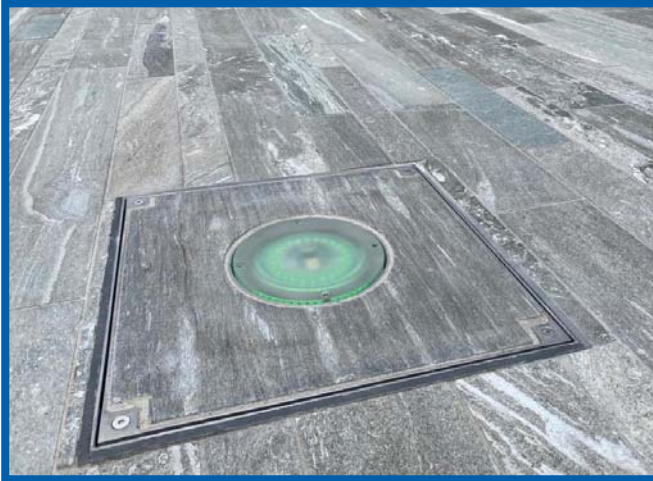
To prevent accidents, the head is equipped with a surrounding RGB LED lighting and two radar sensors.

A standard concrete pipe with the dimensions diam. 40 cm, depth 100 cm is provided for installation in the ground. To finish up with the installation site an Inox V2A STAINLESS steel frame with cover is installed over the pipe, to which the retractable bollard is screwed. Installation and removal can thus be guaranteed within a few minutes, which saves time during a service call.

The retractable bollard is connected by means of a pre-assembled cable, which is simply plugged in. There is an open cable end for connection on the supply side. Further retractable bollards, can simply be looped from one to the next by a plug connection.

1. LED operating light including radar sensor
2. Retractable/extendable bollard column
3. Cover V4A anti-slip R13
4. Telaio a incasso V2A
5. Sliding guide
6. Connection cable 12-pin
7. Loop-through cable 12-pin for further bollards
8. Standard concrete tube
9. Connection / Control casing
10. Linear actuator





More model and information can be found in our folder - Senkpoller or on our homepage- Download.

07/2020/1.0

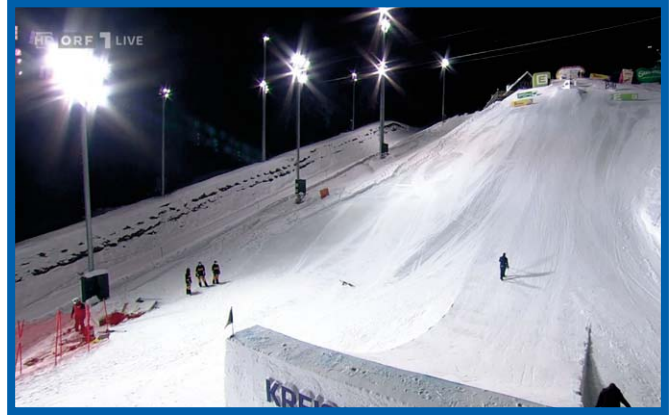
## HPL - High Power LED High performance spotlights



Modular construction, single - LED technology and the latest, highly efficient driver technology were joined for a new LED light, the HPL of GIFAS - Electric. In addition to ease of maintenance, high energy efficiency and high reliability, the HPL is characterized by its simple design. Available in different capacities and various optics and light colors, all lighting requirements can be met from uniform and area-wide runway and construction site lighting across the most diverse outdoor areas to the lighting of a tower crane.

### Technical data

LED Power	75W - 1350W
Operating Voltage	100 - 240VAC
Luminous flux	9.200lm - 200.000lm
Light colour	5.700K / 3.000K
CRI-Index	Ra > 70
L80/B50	> 97.000h
LED resistance to switching	> 1 mio
MacAdam	3-step
Temperature range for operation	-40°C to +50°C
Integrated thermal management	yes
Max. surface temperature	+90°C (suitable for use in industrial premises with fire hazards)
	D-rating label
Dimmable	yes
Housing material	aluminium
Housing colour	black
Type of protection	IP66
Protection class	I
Degree of protection against mechanical	IK10
Swivel range bracket	270°



More model and information can be found in our folder - Chapter 7.2 or on our homepage- Download.

07/2020/1.0

**GSL GIFAS StreetLED**  
Street - / parking lot lighting

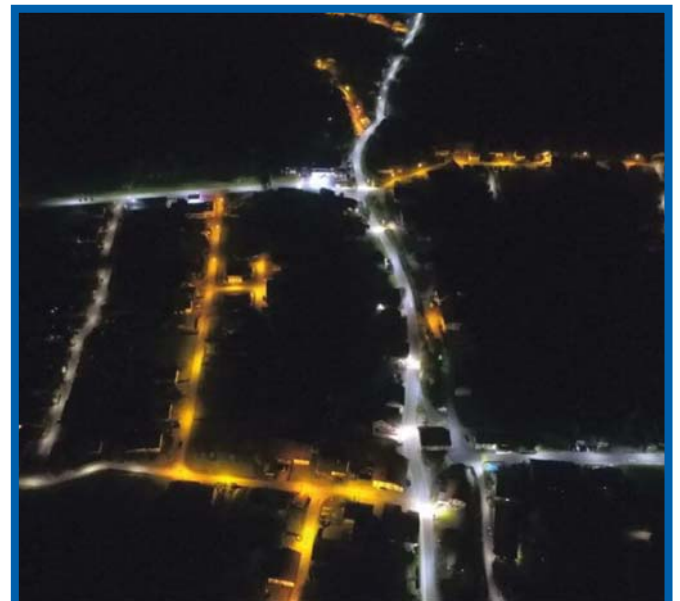


GIFAS StreetLED - with asymmetrical light characteristics. The slim-line luminaire has a die-cast aluminum housing which is powder-coated with a durable epoxy paint. It has ozone and UV-resistant seals and stainless steel screws.

- Type of protection IP66 / degree of protection IK10 (impact-resistant)
- Full luminous flux is available immediately
- Lower power consumption with good luminous efficiency
- Minimal temperature development
- Operates within a broad temperature range: -40°C to +50°C
- No UV/IR-radiation
- Not sensitive to vibrations
- Easy opening of the housing without tools
- Disconnecting the connectors when opening ensures safe working during the installation and maintenance process.
- Universal bracket for pole or wall installation, tilt adjustment in 5° increments from -15° to +15°

**Technical data**

LED Power	40W / 75W / 120W / 150W / 165W
System performance	42W / 82W / 121W / 159W / 174W
Operating Voltage	230VAC
Luminous flux	5.836lm / 11.583lm / 16.850lm / 23.204lm / 27.440lm
Light source	SMD-LEDs
System Efficiency	139lm/W / 141lm/W / 139lm/W 146lm/W / 158lm/W
CRI-Index	Ra > 70
Luminous angle	140x50° / 130x75°
L90/B10	> 100.000h
Color temperature	4.000K neutralweiß
Temperature range for operation	-40°C bis +50°C
Dimmable	ja (1-10V)
Housing material	Aluminium - epoxidbeschichtet
Housing colour	grau
Cover	PMMA
Type of protection / Protection class	Lights IP66 / II
Schutzgrad für mechanische Schäden	IK10
Gewicht	7,2 kg
Abmessungen L x B x H	556 x 324 x 70 mm
Schwenkbereich Universalhalterung	-15° bis +15°
Mastansatz für Ø	60 mm



More model and information can be found in our folder - Chapter 7.6 or on our homepage- Download.

## DeltaLUXX 2

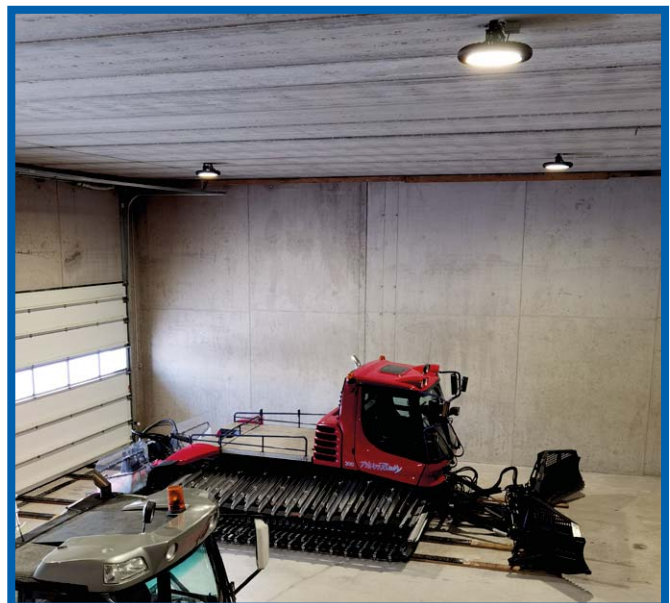
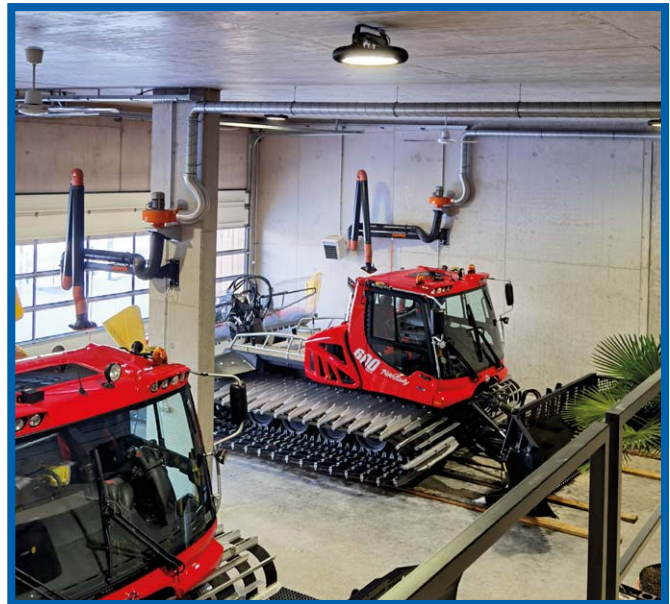


The new hall deflector from GIFAS impresses with design and flexibility. The efficient thermal management of this hall light, which ensures a permanently adequate cooling even in dust and dirt-contaminated areas, supports the current and efficient LED technology with a service life of at least 80.000 hours. The DeltaLUXX 2 can be integrated into intelligent lighting systems by means of optional DALI and 1-10V dimming interfaces.

On the basis of high-performance LEDs, the DeltaLUXX 2 demonstrates its enormous luminaire efficiency, particularly in areas with high luminous intensity that are difficult to illuminate. With an external diameter of 450 millimeters, 180 high-end LEDs and high-quality individual optics with various different radiation characteristics, it is possible to be used in halls up to 25 meters high.

### Technical data

LED Power	90W - 250W
Operating Voltage	100-277VAC (50/60Hz)
Luminous flux	16.400lm - 38.900lm
Light source	SMD-LEDs
Light colour	5.000K
CRI-Index	Ra >80
Beam angle	open distribution 120° optics 75° / 50°
L70/B10	> 80.000h
Type of protection	IP65
Protection class	I
Shock resistance	IK08 (for the version with PC cover)
Temperature range for operation	90W/100W -30°C to +65°C 130W -30°C to +60°C 170W -30°C to +55°C 200W -30°C to +50°C 250W -30°C to +45°C
Max. surface temperature	+90°C (suitable for use in industrial premises with fire hazards) D-rating label
Housing material	Aluminiumdruckguss
Housing surface	PTFE-coated (approved for the food industry)
Housing colour	black
Cover	3 mm ESG (Vision), 3 mm polycarbonate
Connection cables	1 m
Certification	ENEC, CB, CE, D-rating label



More model and information can be found in our folder - Chapter 7.1 or on our homepage- Download.

07/2020/1.0



**AlphaLUXX**



The AlphaLUXX floodlight is 100% **Made in Germany**. During the development, great emphasis was placed on the quality of the components, coupled with excellent efficiency and state-of-the-art technology.

**AlphaLUXX 25-60**

The AlphaLUXX 25-60 is the practical version for mobile use and convinces with its quality, performance and handling.

**AlphaLUXX 80-120**

The Lamp impresses with the enormous efficiency and is also available in a dimmable version.

**Technical data**

LED Power	25W - 120W
Operating Voltage	100-240 VAC (50/60Hz)
Luminous flux	3.544lm - 18.636lm
Light source	SMD-LEDs
Light colour	5.000K (4.000K on request)
Beam angle	120°
CRI (colour rend. index)	Ra >80
L70/B10	> 80.000h
Type of protection	IP65
Protection class	I
Shock resistance	IK10 (for the version with PC cover)
Dimmung	optional 1~10V (DALI mit Zusatzmodul)
Temperature range for operation	-30°C to +60°C
Max. surface temperature	+90°C (suitable for use in industrial premises with fire hazards)
	D-rating label
Housing material	Die-cast aluminium, alloy 230D
Housing surface	PTFE-coated (approved for the food industry)
Housing colour	black (other colors also available with powder coating)
Certification	ENEC, CE, IK10 (suitable for food industry)

\*von Modell abhängig



More model and information can be found in our folder - Chapter 7.1 or on our homepage- Download.

## PLAZA



Slim design, single - LED technology and the latest, highly efficient driver technology were joined for a new LED light - the PLAZA FlatLED of GIFAS-ELECTRIC. In addition to ease of maintenance, high energy efficiency and high reliability, the PLAZA FlatLED is characterized by its simple design. Available in different capacities and various optics, uniform and planar hall lighting, a wide range of outdoor areas, or to use for lighting a highbay warehouse - all lighting requirements can be solved.

### Technical data

LED Power	16W - 150W
Operating Voltage	230VAC / 220VDC
Luminous flux	2.200lm - 21.220lm
Light source	SMD-LEDs
CRI-Index	Ra > 80
Loss of luminous flux	< 10%
LED resistance to switching	> 1 Mio
Color temperature	5.700K
MacAdam	3-step
Temperature range for operation	-20°C to +50°C
Max. surface temperature	+90°C (suitable for use in industrial premises with fire hazards), D rating label
Housing material + Reflector	aluminium
Housing colour	black
Cover	5 mm safety-glass
Type of protection	IP66
Type of protection plug	IP44
Protection class	I
Degree of protection against mechanical	IK08



More model and information can be found in our folder - Chapter 7.1 or on our homepage- Download.

**GDL - GIFAS DiscLED**



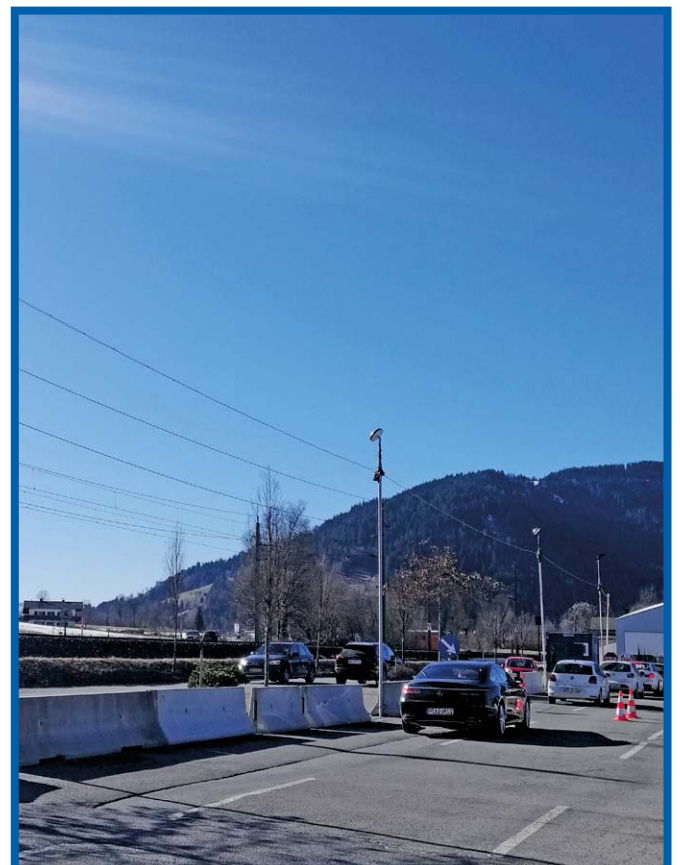
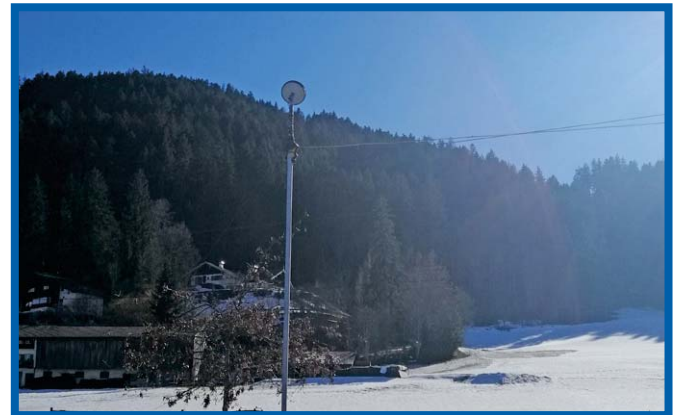
GDL with tripod joint tilt up to a maximum of 45 degrees

**GDL - GIFAS DiscLED**

The compact large-area light with an illumination area of 500 m<sup>2</sup> (radius 25 m) when used at a height of 4 meters). The GIFAS DiscLED can be mounted upright on the tripod (not included). Due to the inclination of the lamp head, it is possible to direct the illumination in one direction.

**Technical data**

Input voltage	100-270VAC
Light source	SMD-LEDs
Radiation characteristic	100° - with diffuse cover
System performance	310W
LED power	300W
Luminous flux	39.000lm
System efficiency	130lm/W
Light color	5.000K coolwhite
CRI (Color rendering index)	RA >80
L80/B50	>50.000h
Dimming	no
Safety class	IP65 - for use in unprotected outdoor area
D-marking	none
Protection class	I
Shock resistance	IK08
Temperature range of use	-40°C up to +50°C
Housing	aluminum
Housing surface	coated
Housing color	grey / black
Covering	PMMA
Weight	approx. 7,8 kg
Swivel range tripod mount	+/- 45°
Supply line	5m H05RN-F 3G1,0 mm <sup>2</sup>
Dimensions D x H	400 x 313 mm (incl. tripod mount)



More model and information can be found in our folder - Chapter 7.4 or on our homepage- Download.

## ApolloLED2N Large area lighting



**Efficient:** illumination area of more than 700 square meters. Good illumination increases the quality of work and reduces the risk of accidents. This ensures the safety of the work sites.

**Robust:** high degree of stability, even with high wind speeds!

**Practical:** does not take up a lot of space and can be ready for use without much effort. Delivered in an impact-resistant flight case for optimal protection.

**Flexible illumination:** unilateral minimize glare by switching off half the bulbs.

### Technical data

LED Power	120W
Operating Voltage	230V
Luminous flux	to 53.760lm
Illuminant	896x0,5W SMD-LEDs
Power consumption	240/480W*
Light colour	5.000 K
LED-Operating life	> 50.000h
Temperature range for operation	-25°C to +50°C
Housing material	plastic
Cover	plastic
Power supply	2
Opt. mounting height	3500 mm
Illumination area	more than 700 m <sup>2</sup>
Full power	immediately
Type of protection	IP44 (IP54 from above)
Protection class	I
Dimensions (Ø x L)	205 x 900 mm
Weight	11 kg

### Carrying Case

Dimensions (W x L x H)	280 x 1180 x 300 mm
Weight	8,6 kg

### Tripod

Dimensions:	
Height extended	3580 mm
Diameter/ root circle	1280 mm
Maximum load	30 kg
Weight	21,5 kg



More model and information can be found in our folder - Chapter 7.2 or on our homepage- Download.

07/2020/1.0

**ApolloLED ECO**  
Large area lighting

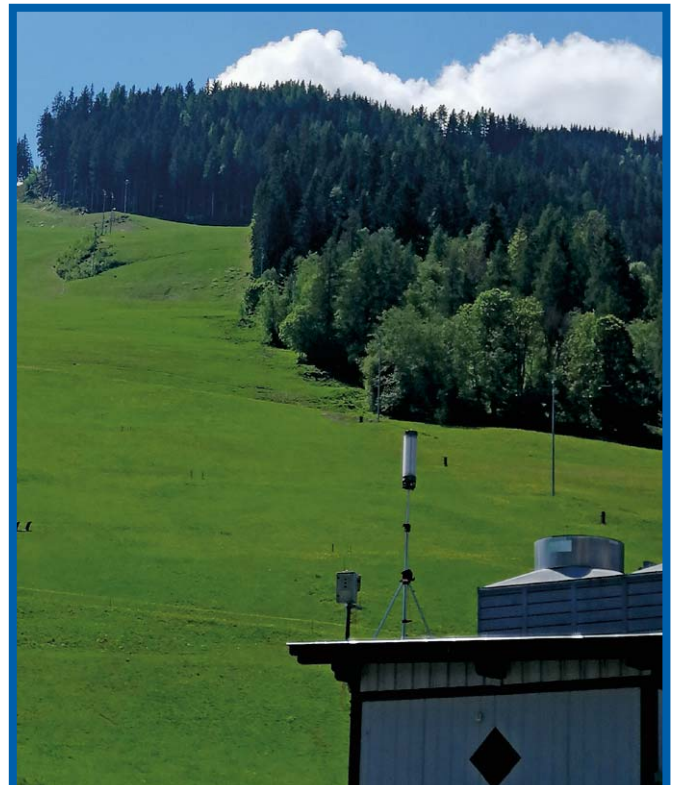


ApolloLED ECO mit Stativ-Gelenk  
Neigung bis maximal 45°.

The tried-and-tested Apollo light is entering the next generation: ApolloLED ECO is a true power guarantee (156lm/W) with reduced height and lower weight thanks to the latest high-end SMD LEDs. The accessories, such as the transport bag and tripod, are now also more handy and make the ApolloLED ECO system a practical large area luminaire in a compact design.

**Technical data**

LED Power	156W
Operating Voltage	100~277VAC
Luminous flux	to 32.320lm
Illuminant	480x0,5W SMD-LEDs
Power consumption	300W
Light colour	5.000K
LED-Operating life	> 50.000h
Temperature range for operation	-25°C to +50°C
Housing material	plastic
Cover	plastic
Power supply	1
Opt. mounting height	2700 mm
Illumination area	more than 600 m <sup>2</sup>
Full power	immediately
Type of protection	IP44 (IP54 from above)
Protection class	I
Dimensions (Ø x L)	208 x 600 mm
Weight	7,5 kg
<b>Carrying Bag</b>	
Dimensions (Ø x L)	210 x 650 mm
Weight	0,3 kg
<b>Tripod</b>	
Dimensions:	
Height extended	2400 mm
Diameter/ root circle	1280 mm
Maximum load	40 kg
Weight	9,4 kg



More model and information can be found in our folder - Chapter 7.2 or on our homepage- Download.

## WayLED Mobile Wegbeleuchtung



No impact on agriculture.

The system can be dismantled and used in the summer with little effort. The flat grounded screw foundation is closed with a lid and remains in the ground. Thus, it is available in the next winter season at any time.

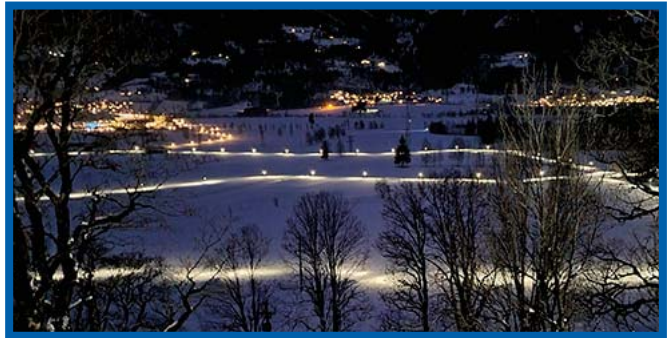
- Full luminous flux available at all times
- Easy to assemble
- Placement anywhere
- Environmentally friendly
- Energy efficient LEDs

### Technical data Mast

LED Power	16W
Light	LED use up to 8W max
Operating Voltage	230 VAC
Light colour	4.000K
Illumination	approx. 15 m in both directions
Housing material	aluminium
Housing colour	alu-natur
Mounting	on ground screw socket
Weight	approx. 3,1 kg
Dimensions Ø x H	6 x 280 cm
Type of protection	IP65
Temperature range for operation	-35° to +40°

### Technical data screw foundation

Weight	approx. 1,6 kg
Dimensions Ø x H	6 x 60 cm



More model and information can be found in our folder - Chapter 7.6 or on our homepage- Download.

07/2020/1.0

Industrie-LED - 5.



I-LED 5.27

I-LED 5.15

Small LED-flood light with symmetric luminous characteristics and slim construction, is powder-coated in black.  
Redirection: I-LED 5.27 3 m / 5 m feeding-line 2x1 mm<sup>2</sup> / 3x1 mm<sup>2</sup> and I-LED 5.15 3 m feeding-line 2x1 mm<sup>2</sup>.

- Full luminous flux is available immediately
- Lower power consumption with good luminous efficiency
- Minimal temperature development
- Extremely resistant to switching (> 1 million)
- Maintenance-free
- No UV/IR-radiation
- Not sensitive to impact and vibrations

**Technical data**

LED Power	15W - 27W
Luminous flux	900lm - 1.600lm
CRI-Index	Ra > 80
Luminous angle	Flood / Spot
Average LED lifetime at 20°C	> 50.000h
Loss of luminous flux	< 10%
LED resistance to switching	> 1mio.
Color temperature	6.500K / cool white
Temperature range for operation	-30°C to +50°C
Housing material	aluminium
Housing colour	black
Cover	plastic glas
Type of protection	IP67
Protection class light	III,II



More model and information can be found in our folder - Chapter 7.4 or on our homepage- Download.

## Industry-LED - 6.



Small LED-flood light with symmetric luminous characteristics. The I-LED 6 has a slim construction, is powder-coated in black and has 3 m feeding-line 2x1 mm<sup>2</sup>.

- Full luminous flux is available immediately
- Lower power consumption with good luminous efficiency
- Minimal temperature development
- Extremely resistant to switching (>1 million)
- Maintenance-free
- No UV/IR-radiation
- Not sensitive to impact and vibrations

### Technical data

LED Power	20W - 60W
Operating Voltage	8-70V DC
Luminous flux	1.400lm - 4.200lm
CRI-Index	Ra>80
Luminous angle	Flood
Average LED lifetime at 20°C	>50.000h
Loss of luminous flux	<10%
LED resistance to switching	>1mio.
Color temperature	6.500K / cool white
Temperature range for operation	-30°C to +50°C
Housing material	aluminium
Housing color	black
Cover	plastic glas
Type of protection	IP67
Protection class light	III



More model and information can be found in our folder - Chapter 7.4 or on our homepage- Download.



**Industry-LED 7.**



Compact LED-flood light with symmetric luminous characteristics. The I-LED 7 has a slim construction, is powder-coated in black and has 3 m feeding line 2x1 mm<sup>2</sup>.

- Full luminous flux is available immediately
- Lower power consumption with good luminous efficiency
- Minimal temperature development
- Extremely resistant to switching (>1 million)
- Maintenance-free
- No UV/IR-radiation
- Not sensitive to impact and vibrations

**Technical data**

LED Power	36W - 72W
Operating Voltage	10-36V DC
Luminous flux	2.160lm - 4.200lm
CRI-Index	Ra>80
Luminous angle	Flood
Average LED lifetime at 20°C	>50.000h
Loss of luminous flux	<10%
LED resistance to switching	>1mio.
Color temperature	6.500K / cool white
Temperature range for operation	-30°C to +50°C
Housing material	aluminium
Housing color	black
Cover	plastic glas
Type of potection	IP67
Protection class light	III



More model and information can be found in our folder - Chapter 7.4 or on our homepage- Download.

## StreamLED Power



- Through wiring for light chain
- Connection by cable gland M20 (for cable Ø 7-14 mm)
- Indoor and outdoor applications
- Low energy with good light efficiency
- Full luminous flux is immediately available
- Minimum temperature development
- Constant brightness independent of outdoor temperature
- Extremely consistent in switching (> 1 million)
- Maintenance-free
- Shock and vibration resistant
- Indestructible (meets industrial health and safety standards)
- No UV / IR radiation

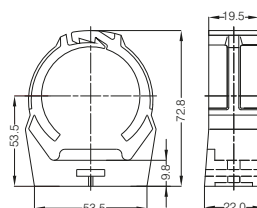
### Technical data

LED Power	6W / 13,5W / 12W / 27W
Operating Voltage	230VAC, 9 - 36VDC
Illuminant	LED strips cool white approx. 6.500K
Beam Angle	120°
Type of protection	IP68 / IP69
Degree of protection against mechanical with acrylic tube*	IK10
Protection class	I
Temperature range for operation	-30°C to +50°C
Tube	shockproof acryl Ø 54 mm

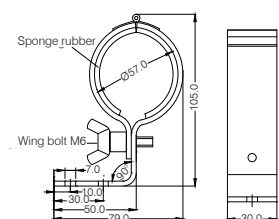


### Wall fittin:

EDP-No. 107096



EDP-No. 840082



More model and information can be found in our folder - Chapter 7.3 or on our homepage- Download.

07/2020/1.0

**AmbitLED Power**



- Compact LED light strip
- Housing made of extruded aluminium
- Anodized surface
- Fixing bracket in stainless steel, variable mounting bracket
- Type of protection: IP67
- Light source: LED strips
- LED strip in moisture- and dust-tight sealing compound (mat)
- Connector: 2-pol., robust metal M16 industrial connectors, IP67
- Conductor cross-section: max. 0.75 mm<sup>2</sup>/ clamping area: 4-8 mm
- Delivery for through wiring with protective cap
- Loop-connection for light chain (max. 7A)

**Technical data**

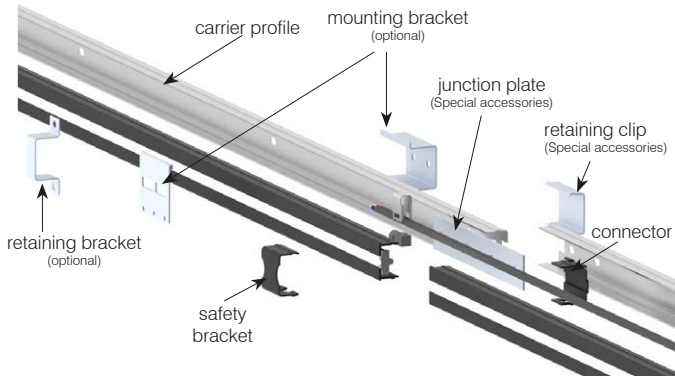
LED Power	2,8W / 6,8W / 13,6W
Operating Voltage	24VDC <sup>1</sup> +/- 4%
Illuminant	LED-strips cool white approx. 6.500K
Type of protection	IP67
Protection class	III
Service temperature range	-25°C to +50°C
Plug	2-pin connector with screw locking
Cable	2x0.75 mm <sup>2</sup> , halogen free, UV- and weather resistant, cold resistant to -40°C

<sup>1</sup>TECHNICAL NOTE: In order to guarantee reliable and safe operation of the LED modules, it is absolutely necessary to use a power adapter that is electronically stabilized. This is the only way to protect LED modules from overcharging, overheating and short-circuiting.



More model and information can be found in our folder - Chapter 7.3 or on our homepage- Download.

## LaneLED Wall



Die Lichtleiste «LaneLED» aus dem Hause GIFAS ist das Basiselement für die beleuchteten Handläufe und das Lighting System LaneLED WALL. Abhängig von den Anforderungen des Betreibers wird der entsprechende Typ ausgewählt, wobei die gewünschte Beleuchtungsstärke die entscheidende Vorgabe ist. Die weiteren Parameter der LaneLED sind sorgfältig bestimmt.

- Lichtfarbe Standard 4.400K
- (auf Anfrage 3.000K oder 5.800K)
- Abstrahlungswinkel 120°
- Schutzgrad IP66/69K
- L90/B10 100.000h +25° C
- Temperatur Einsatzbereich - 25° C bis +45° C

### Aufbau Lichtleiste LaneLED

Das Trägerprofil der Lichtleiste LaneLED WALL ist ein Sonderprofil aus Spezialkunststoff mit besonderen Eigenschaften für mechanische und chemische Belastungen.

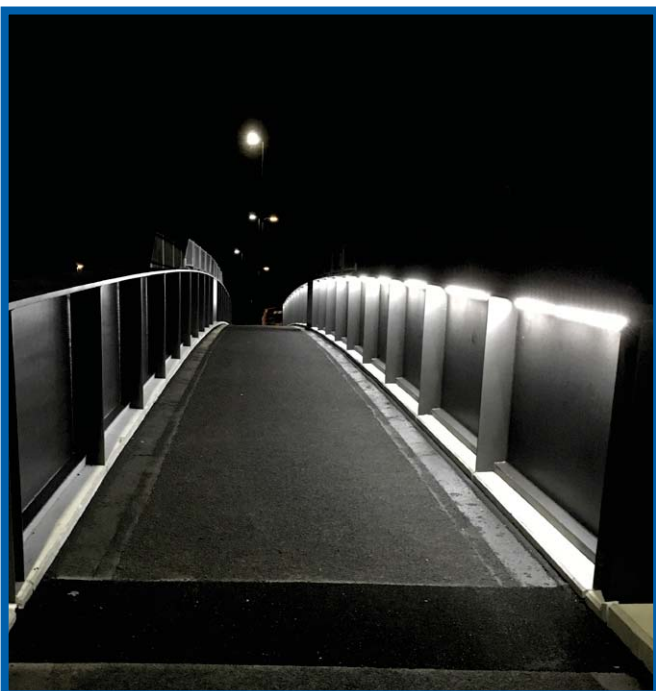
Es wird ein flexibles und teilbares LED-Band eingelegt und mit einer 2K-Vergussmasse fest in das Kunststoff-Profil eingearbeitet. Das Vergießen führt zum hohen Schutzgrad von IP66/69K.

Im Rückraum des Profils (zwischen den Flanken) ist Platz für die Kabelführung inklusive des Stromabnehmers.

Die LaneLED-Lichtleiste ist, komplett anschlussfertig (steckbar) exkl. Montagmaterial (Systemkabel und Stromabnehmer).

### Ausleuchtung

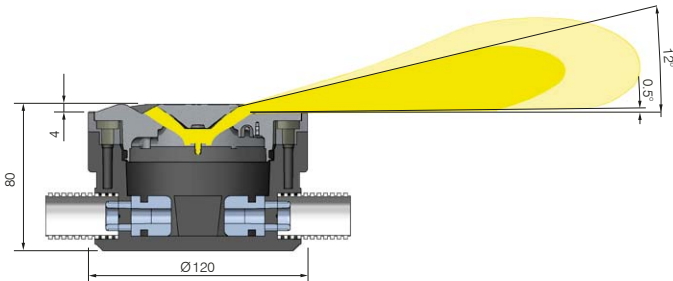
Lichtkegel mit Abstrahlung 120°. Ausleuchtung in Abhängigkeit der Platzierung.



More model and information can be found in our folder - LaneLED WALL or on our homepage- Download.

07/2020/1.0

**TrafficLED**



The standard SN 640853 "Marking underfloor luminaires" with the following specifications and requirements served as the basis for our development:

- permanently traversable marking light which covers the entire temperature range summer / winter (range: -30 to +75°C) and withstands the mechanical loads (40t)
- for safety reasons (danger of slipping) matt, circular luminaire
- protrusion over pavement max 4.0 mm
- Resistant to chippings, Spikes / snow chains and street cleaning
- no protruding edges and corners on which a snow plough can be suspended
- The surface and the light emission area are designed in such a way that as little dirt as possible can accumulate.
- Absolutely waterproof, frost-proof, resistant to UV sunlight, chemicals, oil and road salt
- Control by push-button, radar sensor, loop, vibration plate or by timer (e. g. in school buildings)
- very good visibility in darkness, wetness and snow
- further applications: e. g. track marking

**TrafficLED module**

The TrafficLED is accessed through the system cable. It lights up on two sides. Due to the modular design with lower and upper part, it is very easy to install. The different modes of the TrafficLED such as dimming, flashing, strobe light etc. can be set via the control.

**Technical data**

Double-sided with 6 LEDs on each side	
Light colours	white (5.600 K), orange (600 nm), blue (470 nm)
Luminous intensity	30cd
LED-Operating life	50.000 h
Type of protection	IP68 / IPX9K
Protection class	III
Operating Voltage	24VDC (range 18 - 44VDC)
Power consumption	140mA @ 18 - 28VDC / 85mA @ 28 - 44VDC
Diameter	120 mm
Height	80 mm
Upper part	chrome steel V4A
Lower section	IXEF glass fiber reinforced polyarylamide, black
Height over road surface level	4 mm
Temperature resistance	-30°C to +75°C
Drive-over resistance	D400 according to DIN EN124



More model and information can be found in our folder - TrafficLED or on our homepage- Download.

## EasyCHECK 2

(Review of resources and integration into existing Operations Manager software)



### Dimensions

430 x 290 x 230 mm (L x W x D)

The measuring unit including all its extension modules is fitted in an aluminium box for protection. There are pockets in the box cover for accessories and the operation manual.

**Preset limited values are in accordance with:**

ÖVE/ÖNORM E 8701-1  
 ÖVE/ÖNORM E 8701-2-2  
 DIN VDE 0701  
 DIN VDE 0702

### Basic functions

**A-Measure:** Protective conductor resistance (4point-resistancy test)

Measurement range: 20mΩ – 2.000 mΩ  
 Measurement accuracy: 200mΩ – 2.000mΩ +/-5% +/-2Digit (when used with KELVIN-measuring pliers )

**B-Measure:** Insulation resistance

Measurement range: 0,1MΩ – 10MΩ  
 Measurement accuracy: 0,1MΩ – 10MΩ +/-5% +/-2Digit

**C-Measure:** Leakage current

Measurement range: 0,2mA – 20mA  
 Measurement accuracy: 0,2mA – 20mA +/-5% +/-2Digit

**D-Measure:** Residual current – Direct measurement method

Measurement range: 0,2mA – 20mA  
 Measurement accuracy: 0,2mA – 20mA +/-5% +/-2Digit

**E.1-Measure:** Protective conductor current – Direct measurement method

Measurement range: 0,2mA – 20mA  
 Measurement accuracy: 0,2mA – 20mA +/-5% +/-2Digit

**E.2-Measure:** Protective conductor current - differential current measurement method using clamp

Measurement range: 0,2mA – 20mA  
 Measurement accuracy: 0,2mA – 20mA +/-10% +/-2Digit

**F-Measure:** Function test / Power Measurement (apparent power)

Measurement range U: 0 – 250VAC (TRMS)  
 Measurement accuracy U: +/-10% +/-2Digit  
 Measurement range I: 0,1 – 16A (TRMS)

## Testing Adapter



**Testing adapter for testing of three-phase current devices with EasyCHECK 2:**

- contact electricity measurement (D)\*
- earthing wire power measurement (E)\*

\* These measurements are carried out under operating voltage.

## Barcode- und RFID-Reader



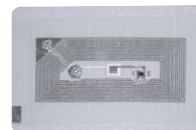
RFID reader



Barcode reader



RFID-stickers - front side



RFID-stickers - rear side



Barcode-stickers



More model and information can be found in our folder - Chapter 06 or on our homepage- Download.

07/2020/1.0

**Event distribution**



**Technical data Series 7400 / 7700 - frame**

Width x height x depth	max. 360 x 595 x 320 mm (with frame)
Type of protection	IP44 (up to IP65 possible)
Housing material	Solid rubber (vulcanised butyl rubber)
Specifications of the housing	Halogen-free, UV-resistant, resistant to oils and various acids and alkalis
Gasket	Foamed polyurethane gasket seal
Cover fixing	Stainless steel screw TORX T15 A4
Macrolon cover	max. 13 / 17 width units

**Series 502 with LED flood light**

- Robust, halogen-free reel body made of vulcanized butyl rubber fully insulated
- Solid tubular steel frame, powder-coated
- High mechanical strength, UV- and weather-resistant
- Resistant to oils, acids and alkalis
- Maintenance-free, impact-resistant, resistant to ageing
- Integrated brake, which acts directly on the roller-bearing axle, but does not rub against the roller itself
- All sockets can be replaced individually
- With overheating protection as standard
- Weight without cable approx. 4.3 kg
- Small LED flood light 5x3W, 900lm coolwhite
- Flood light swiveling, switchable



More model and information can be found in our folder - Chapter 09 / Chapter 04 or on our homepage- Download.

**Cable bridges, cable and wires**



**Wires and Cable**

Developing new insulating materials for Gifaplus, Proflexx, and GIFAS Thermoflex cables enable the product features to be extensively adapted to the user's requirements.

GIFAPLUS, GIFAS PU-, and Proflexx cables with reinforced outer sheaths are compliant as per the GMSuö standard for heavy-duty rubber hose cables and are thus approved for use on building sites and in areas where explosions are possible.

These cables have a very large scope of application due to the use of advanced insulating materials and specialised manufacturing methods.

**Cable Printing**

On request we will print the cable.

**Packaging**

Unless otherwise agreed, the cable lengths are finished on 100 m rings or for larger dimensions, they are wound around a one-way cable reel.

**Production lengths**

Depending on the manufacturing method, +/- 10% may be oversupplied/undersupplied for lengths of 500 m and over. Guaranteeing that a specific length is supplied requires a supplemental agreement.

**Cable bridges and hose bridges**

Protect your cable transitions using the GIFAS cable or hose bridge system to avoid accidents and damage.

Ideal for power, gas, water, compressed-air, and hydraulic cables.

These systems tidy up all temporary or permanent sets of cables and make them safe.

The elements can be infinitely extended using integrated or attached connecting plugs.

## SunLED Rechargeable lights



The SunLED battery light is a robust and mobile battery light. Thanks to the insensitive housing and the cover made of hardened glass, it can be used flexibly in various applications in the industrial or workshop area. Thanks to the multi-level dimming, the lighting time can be up to 10 hours. The lamp is light and independent of connection. External devices such as cell phones can be charged via a USB charging port. The modern lithium-ion battery has no memory effect.

- Brightness adjustable to 100%, 50%, 25%
- USB connection for charging external devices
- Full luminous flux available immediately
- Long lighting duration up to 10 hours
- Minimal temperature development
- No UV / IR radiation
- Insensitive to shock and vibration

### Technical data

System performance	50W
Power supply	Li-Ion Akku, 13200mAh
Charging port	13V / 1,2A
USB out port	5V / 1A
Light colour	6.500K
CRI	>80 Ra
Dimmable	25% / 50% / 100%
Lighting time	approx. 2,5h (100% Light efficiency) approx. 5h (50% Light efficiency) approx. 10h (25% Light efficiency)
Luminous flux	4.000lm
Type of protection	IP44
Protection class	III
Temperature range for operation	-20°C to +50°C
Housing material	aluminium plastic
Cover	ESG
Weight	approx. 3,7 kg
Dimensions (W x H x D)	295 x 342 x 112 mm

## Prima-LED Rechargeable lights



The proven concept of the Prima is now available with innovative LED technology. With this lighting system you benefit from all the LED technology advantages!

The PrimaLED is a technically sophisticated, professional light with excellent light output and low energy consumption.

This worklight guarantees optimised floodlighting with glare-free and evenly distributed light. It also offers various setup options for any application: hanging, lying or standing!

- Full luminous flux available immediately
- Low energy consumption with a high light yield
- Minimal temperature development
- Extremely switching-resistant (> 1 million)
- Maintenance-free
- No UV / IR radiation
- Yellow housing made from impact-resistant polycarbonate with black rubber edges, providing shock and impact protection
- Carrying handle also serves as a support, which when engaged, moves the lights to the desired position
- Saturated bulb cover made from Makrolon: shock and impact resistant, seals the housing to make it water- and dust-proof

### Technical data

Operating Voltage	24/42V, 230V AC
Power supply	Mains connection
Illuminant	84x0,3W SMD-LED's
Operating performance	26W
Color temperature	5.700K
Light efficiency	4.200lm
Type of protection	IP65 (without socket) IP44 (with socket)
Protection class	I,II (230V) III (24/42V)
Temperature range for operation	-20°C to +40°C
Dimensions (W x H x D)	305 x 295 x 110 mm
Weight	3,1 kg

More model and information can be found in our folder - Chapter 07.4 or on our homepage- Download.

07/2020/1.0



**Head torch iH11R**



The iH11R has all the basic features of the iH series and, in conjunction with the Ledlenser Connect app, offers individual personalized operation, timer and much more. This high performance, highly flexible headlamp is ideal for a wide range of uses thanks to the rubber lining on the inside of the headband, the overhead helmet mount and other thoughtful accessories.

- Boost mode: Up to 1000 lumens at the push of a button
- Smartphone connection via Bluetooth for personalized settings, timers, etc.
- Stepless swing mechanism for aligning the light cone, even upwards
- Optisense Technology - automatic adjustment to the lighting conditions
- Multicolor LED in the Colors red, green and blue
- Helmet attachment options: Rubberized headband, self-adhesive fastening material
- Over-the-head helmet holder
- Magnetic holder and self-adhesive metal plate

**Technical data**

Colour temperature	6000K - 7500K
Luminous flux Power/ Low Power	750lm / 10lm
Batteries	ICR Li-ion 3.7V
Lighting time Power/ Low Power	4h / 100h
Boost time	7 h
Rechargeable	yes
Type of protection	IP54
Weight incl. rechargeable batteries	179 g
Dimensions Ø	39,6 mm
Operating temperature range	-20 °C to +40 °C

**GIFAS TorchLED**

Battery-operated or rechargeable



- PA6-Casing, with rubber overmoulded handle (non-slip)
- Freestanding
- Belt holder/ bracket
- Impact-resistant
- Lamp holder (charger)

Light functions		TorchLED (yellow) with Battery / rechargeable	TorchLED emergency light (red) with 1900mAh rechargeable
Main functions	Function	Operating time	Operating time
1 power LED white	focused light / broad light		
	full Load	approx. 6 h / 4 h	approx. 4 h
	dimmed	>80 h / >40 h	>40 h
2 LED signal lights	permanent / flashing	>20 h / 80 h >10 h / 40 h	>10 h / 40 h

**Technical data light**

Operating Voltage TorchLED (yellow):	
- Battery operation	4 Stk. AA 1,5V batteries to 3000mAh
- Rechargeable battery	4 Stk. AA 1,2V rechargeable batteries mind. 1900mAh
Operating Voltage TorchLED (red) with emergency light function:	
- Rechargeable battery	4 Stk. AA 1,2V rechargeable batteries to 1900mAh
Operating temperature range	-20 °C to +45 °C
Type of protection	IP 54
Dimensions (W x H x D)	67.8 x 115.5 x 34 mm
Weight	approx. 230 g

**Technical data charging station**

Housing	ABS
Montage	Wall or table mounting possible
Power supply	700mA charging current
Charging time	approx. 1900mAh cells max. 4 h
Contacts	spring steel, gold plated
Type of protection	IP40
Dimensions (W x H x D)	86,6 x 79,6 x 44 mm

More model and information can be found in our folder - Chapter 7.5 or on our homepage- Download.

## FlashLED with emergency light function



- The latest Li-Ion technology for a high energy density and maximum service life (up to 1.000 cycles possible)
- GIFAS Battery Management System to monitor and verify all important battery operating parameters
- Up to 14 hours of light in four selectable modes:
  - Spot: clustered, wide beam of light
  - Wide: light that illuminates the room
  - Full light: combination of Spot and Wide
  - Emergency light: broadly illuminating light cone
- Memory function = last setting is saved
- Blinking mode
- Robust housing made of polyamide
- Corrosion-resistant charging contacts (spring steel)
- Vertical swivelling light head
- Over-current, temperature and deep discharge protection
- Low self-discharge of the Li-Ion battery

### Technical data FlashLED 2

Operating Voltage	10 - 42VDC
Power supply	Li-Ion battery 14.4V 2.600mAh
Charging time	5 h
Lighting time:	
- Spot	10 h (3 LED)
- Wide	14 h (2 LED)
- Full light	5 h (5 LED)
- Emergency light	5 h (5 LED)
Illuminant	5 Power-LED à 3W, cool white 5.000K
Luminous flux LED	200lm - 1.250lm
Type of protection	IP65
Protection class	III
Operating temperature range	-20° bis +45°C
Charging temperature range	0° bis +45°C
Dimensions (L x W x H):	
- Light excl. charging station	251 x 124 x 94 mm
- Light incl. charging station	323 x 149 x 108 mm
Weight	1,06 kg

### Technical data Charging station

Operating Voltage	230VAC (85 - 264VAC) od. 12-24VDC
Type of protection	IP54
Protection class 230 VAC	II
Protection class 12 - 24 VDC	III
Dimensions (L x W x H)	149 x 276 x 95 mm
Weight	430 g

## G40R Rechargeable light with ground magnet



Small, powerful LED spotlight combined with the Li-ion - Battery Technology.

Housing material	Plastic blue/black rubberized , shock-proof
Lamp head	aluminium black
Switching mode	100%, 50%, flashing, AUS
Additional Features	Base with magnet 4x 50N Handle can be swiveled 180° USB socket 5VDC 2A 230VAC 50/60Hz IP20
Charger	Car-adapt. 12/24VDC/8,4VDC with cig.-plug optional multi charger (5-times) 230VAC
Capacity display	LED2 GREEN >65% YELLOW 25-65% RED 10-25% ROT flashing < 10%

### Technical data

LED Power	5 x 3W
Luminous flux	900lm
Operating Voltage	7.4VDC
Rechargeable battery	Li-Ion battery 4.400mAh
Lighting time	Modus 100% approx. 5h Modus 50% approx. 10h
Boost time	approx. 5h
	light indicator LED GREEN = 100%
Luminous angle	Flood 90°
Type of protection	IP65
Weight incl. rechargeable battery	approx. 850 g
Dimensions (L x W x H)	237 x 120 x 115 mm
Operating temperature range	-20 °C to +45 °C
Charging temperature range	+10 °C to +30 °C

More model and information can be found in our folder - Chapter 7.4 or on our homepage- Download.

**G80R**  
Rechargeable light



Lamp housing	high-impact plastic monospace, surface rubberized, color fluorescent yellow fluorescent.
Lamp head	3-Powered protected with black absorbing rubber cover Holder for slip-on protection, push-on spreading lens, push-on colored lens.
Control panel	Multifunction buttons - color bright orange, switching stages ON / 50% / 100% / 30% / OFF 4-stage LED capacity indicator.
Rechargeable battery	Powerful high-efficiency cycle-proof lithium iron phosphate battery (LiFePO4)
Rechargeable loading	contactless inductive via power chip with error protection function
Receiving screw thread	M8x10 at the lamp base for optional magnetic holder, ball head, tripod

**Technical data**

Power supply	Rechargeable battery 6,4VDC 10Ah LiFePO4
Charging voltage inductive	19V 2A
Fully charged	after approx. 5h
Illuminant	3x LED 3W BA4° CREE XPG II 6500K
Different lighting levels	50%, 100% and 30%
Light bar	50% 400lm, 100% 750lm, 30% 250lm
Lighting time (at 20°C)	50% 14 h, 100% 9 h, 30% 20 h
Type of protection light	IP66
Weight light incl. rechargeable battery	1.15 kg
Dimensions L x W x H	222 x 113 x 141 mm
Operating temperature range	-20°C to +45°C
Charging temperature range	+10°C to +30°C
Incl. Wall charger inductive with one adapter each 230VAC and KFZ12 / 24VDC	
Type of protection Wall charger	IP20



More model and information can be found in our folder - Chapter 7.5 or on our homepage- Download.



Subject to technical changes 06/2022/1.0

CONTACT US

**GIFAS**  
ELECTRIC

GIFAS ELECTRIC Gesellschaft m.b.H.  
Strass 2  
5301 Eugendorf  
AUSTRIA

☎ +43 6225 7191 - 0  
☎ +43 6225 7191 - 561  
☎ +49 8654 404 2000  
✉ [verkauf@gifas.at](mailto:verkauf@gifas.at)  
🌐 [www.gifas.at](http://www.gifas.at)

